



Checklist of floral species at the Institute of Forestry, Pokhara Campus, Pokhara, Nepal

Mahamad Sayab Miya¹ and Deepak Gautam^{1*}

¹ Institute of Forestry, Tribhuvan University, Pokhara Campus, Pokhara, Nepal

KEYWORDS

Asteraceae
CITES
IAPS
Fabaceae
Flora

ABSTRACT

Plants are a component of biodiversity and support life system on earth. Exploration of plant species is important to acquire knowledge on plant biodiversity and their distribution. This study documents floral species in the Institute of Forestry, Pokhara Campus, Nepal. The Campus is one of the academic institutions for producing forestry graduates. The plant species were listed from 2020 to the first half of the year 2021 by walking along the accessible routes inside the Campus. A total of 331 species of plants from 276 genera and 99 families were recorded. Fabaceae family represented the maximum number of plant species (n=26) followed by Asteraceae (n=25) and Poaceae (n=21). 43% of the total species recorded were herbs. 31% of the total species were trees. 16 species were invasive alien plant species (IAPS) and four species are listed under Appendix-II of CITES.

Introduction

Plants (Flora) are integral parts of biodiversity and ecosystems. Plants on the land originated about 480-360 million years ago in the mid-Palaeozoic era (Kenrick and Crane 1997) from freshwater algae (Sakakibara 2016). Out of the 5-30 million estimated plant species worldwide, only 1.2 -1.9 million species (5-10%) have been identified, named, and classified so far (Govaerts 2001; Prance 2001; Guerra Garcia et al. 2008; Kunzig 2008; Mora et al. 2011). It is estimated that there could be 4 million

flowering plants on the earth (Govaerts 2001; Shrestha 2011). The maximum floral diversity is present in tropical and subtropical regions (WCMC 1992).

Nepal is a small mountainous country occupying only 0.1% of the global land. Due to the variable geography and climate, it is rich in biodiversity. It harbors 118 types of ecosystems, 3.2% of the world's known flora (GoN/MoFSC 2014). Nepal ranks 31st in the world and 10th in Asia in terms of flowering plant diversity. Floristic exploration was initiated in the early

* Corresponding author

E-mail address: deepakgautamiof@gmail.com

Received 31 July 2021 Accepted 30 November 2021

nineteenth century in Nepal from eastern parts (Rajbhandari 1976). Since then, many researchers have been documenting the flora of Nepal (Rajbhandari 2016). GoN/MoFSC (2014) has presented 6,973 species, Kunwar et al. (2010) has reported 6,653 species while Rajbhandari et al. (2017) reported 5,309 species of flowering plants existing in Nepal. However, the species number may increase up to 7,000 after the revision of the total list (Shrestha and Bajracharya 2019). It is estimated that there are about 1,001 species of algae (Prasad 2013), fungi- 2,182 species (Kost and Adhikari 2015), lichens -850 species (Søchting 2015), bryophytes- 1,213 species (Pradhan 2016), pteridophytes- 550 species (Fraser-Jenkins et al. 2015), and gymnosperms -41 species (Shrestha et al. 2018) in Nepal. About 312 species of flowering plants are endemic to Nepal (Rajbhandari et al. 2017); followed by fungi- 131 species (Adhikari 2016); lichens- 48 species (Bhujju et al. 2007), bryophytes-30 species (Pradhan 2016), and algae- 12 species (Baral 1995).

Human beings depend on plants resource to fulfill their basic needs of food, clothes, shelter and health care (Bhattarai and Khadka 2016; Bhattarai 2019; Miya et al. 2020; Rajbhandary et al. 2020). Plants are also used for herbal medicine, construction materials, fuelwood, fodder, fiber and social religious purposes (Rajbhandary and Winkler 2015). A large proportion of the rural population depend on plant resources (such as timber, non-timber forest products (NTFPs) and medicinal and aromatic plants (MAPs) to sustain their livelihoods and economy (Giri et al. 2001; Angelsen et al. 2014; Shackleton and Pullanikkatil 2019; Lamichhane et al. 2021). Plants play important roles in ecosystem balance, oxygen balance, carbon sequestration, control erosion and nutrient recycling (Rajbhandary et al. 2020).

There is a growing concern about floristic composition, species richness and forest structure worldwide as forests are being fragmented (Myers et al. 2000). The major

threats to biodiversity are habitat degradation, fragmentation and conversion of forests (Abramovitz 1998) which ultimately cause the loss of floral species and ecosystem imbalance. Plant diversity is also threatened by deforestation, climate change, natural disasters, invasion of alien species, overgrazing and human interventions (Hill and Curran 2003; Laidlaw et al. 2007; Murphy et al. 2013; Ribeiro et al. 2014; Thapa and Maharjan 2014; Chaudhary et al. 2016). Many plant species are threatened in Nepal for example, Lauth Salla (*Taxus wallichiana*) and Sarpagandha (*Rauvolfia serpentina*) (Joshi et al. 2017).

It is important to explore floral species in a particular area to identify vital elements of floral diversity, monitor and manage vegetation type, protect and conserve threatened plant species (Sahu and Dhal 2012; Georgieva et al. 2013; Akinyemi and Oke 2014). Bhatta (2011) has recorded a total of 112 species of plants from Institute of Forestry (IOF), Pokhara Campus (PC). The IOF-PC aims to produce capable, efficient, and practical based forest and natural resource technicians to address needs and problems in the field of forestry and related sectors (www.iofpc.edu.np). The identification and knowledge of flora are essential for all forestry graduates. The campus itself has an isolated forest (urban forest) named Banpale Danda adjacent to the Campus buildings. This forest is rich in plant diversity and students are taught about plants found there through different plant identification programs. However, proper documentation of the floral species within the forest and campus premises is still lacking. This study thus aims to document floral species found in IOF-PC. The finding of the study would also help to insight and compare the floral diversity of isolated forests in different parts of the country.

Materials and Methods

Study area

This study was carried out in the Institute

of Forestry (IOF), Pokhara Campus (PC), Pokhara, Nepal from 2020 to the first half of the year 2021. IOF-PC lies in the southern part of Pokhara Valley (28.18°N, 83.99°E). It covers an area of 1528 ropani (77.77 ha) (1 ha=19.66 ropani). The altitude ranges from 750–915 m (Figure 1). The forest (Banpale forest) is a mixed subtropical forest dominated by *Schima wallichii* (Chilaune) and *Castonopsis indica* (Katus). The forest is rich in both floral and faunal diversity. Recently, 10 species of bats were recorded in the forest (Bhattarai et al. 2021). IOF-PC is bounded by Seti Gorge to the west whereas the other sides are surrounded by agricultural land, grazing land, shrubland and human settlements. Pokhara valley receives 4,000 mm of precipitation in a year, however it varies by monsoon (June-September) (<3,000 mm), winter (December-February) (about 100 mm), pre-monsoon (March-May) (<500 mm) and post monsoon (October-November) (<150 mm). Similarly, the mean annual air

temperature is 21°C. The mean temperature of winter, pre-monsoon, monsoon and post-monsoon are about 14°C, 22°C, 26°C and 23°C, respectively. December, January and February are the driest months (Gautam et al. 2019).

Data collection

The floral species were listed along the accessible walking routes inside the forest and campus. The study area was also randomly explored to add species. All the floral species were photographed for identification. The plant species were identified in the fields by examining their leaf, flower and fruit structures. The identification knowledge was acquired from different plant identification programs. The unidentified species, as well as identified species were further confirmed with the help of literature (Polunin and Stainton 1984; Shrestha 1998; Press et al. 2000; Pearce and Cribb 2002; Obha et al. 2008; Rajbhandari and Adhikari

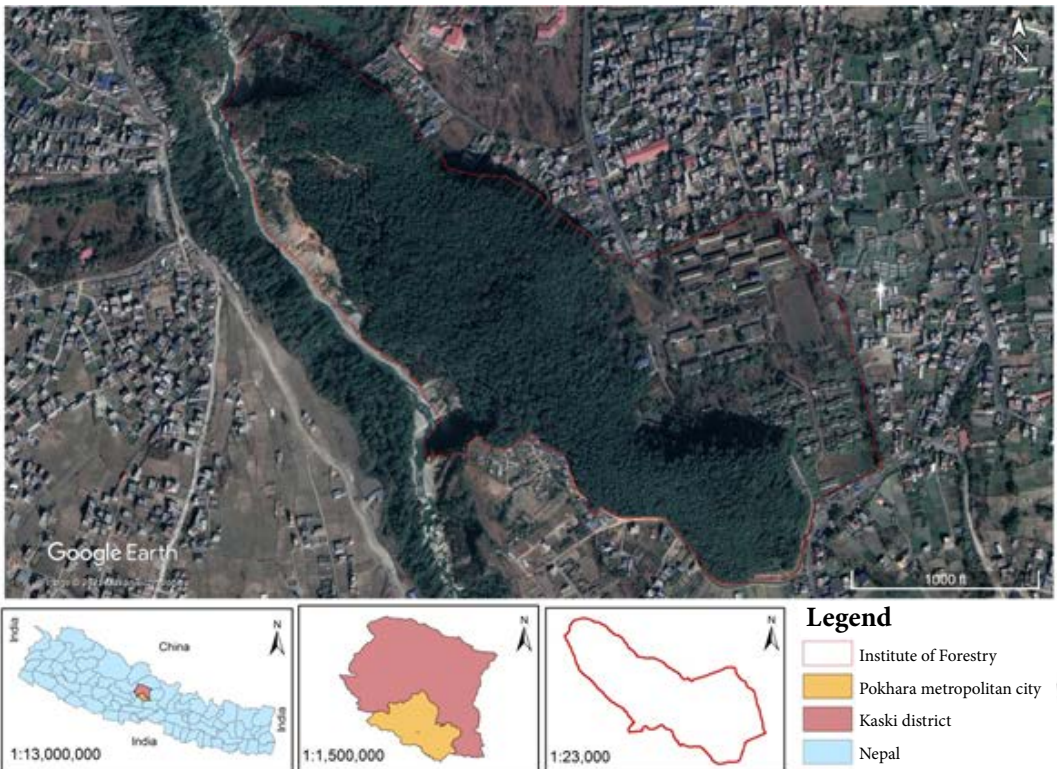


Figure 1: Map of study area showing Institute of Forestry, Pokhara Campus

2009; Raskoti 2009; Rajbhandari and Dhungana 2010, 2011; Watson et al. 2011; Rokaya et al. 2013; Rajbhandary 2016; Shrestha et al. 2018), www.efloras.org, <http://www.floraofnepal.org>, and consultation with experts and campus staffs. The major uses of the species were listed through consultation with campus staff and presented into different use categories (Timber, fuelwood, fodder, ornamental, medicinal and others). The cultivation status is mentioned as wild and cultivated (Ornamental, planted and agriculture).

The nomenclature and author citation are based on the Catalogue of Life (2019). The photographs are presented in photo plates. The invasive species were categorized following Shrestha (2019). Likewise, CITES-listed species are categorized following Joshi et al. (2017). The native and introduced species status were based on KATH (2020) and POWO (2021).

Data analysis

The data were pooled in Excel and presented in tables. The plant species are listed alphabetically.

Results and Discussion

A total of 331 species of plants from 276 genera and 99 families were recorded in the study area. The plant species with their scientific name, local name, common name, family name, habit, cultivation status and native or introduced status and major uses are presented in Tables 1. The present study recorded about three times greater number of plant species than Bhatta (2011).

Family-wise composition of the floral species

The plant species were represented from 99 families. Family Fabaceae represented the maximum number of plant species ($n = 26$), followed by Asteraceae ($n = 25$), Poaceae ($n = 21$), Moraceae ($n = 16$), and Lamiaceae ($n = 14$) (Table 1). The maximum number of plant

species from the family Fabaceae was also observed in different regions of Nepal (Dhami 2008; Pathak and Baniya 2017; Pandey and Ghimire 2020; Bhandari et al. 2021). Fabaceae is the 3rd largest plant family in the world, and possesses wide life forms such as trees, shrubs, herbs and climbers (Watson and Dallwitz 1992; Judd et al. 1999; Ahmed et al. 2016). Likewise, another family - Asteraceae which is the largest plant family comprising more than 24, 000 species (Funk et al. 2009; Valles et al. 2013), represented a quite similar species number to Fabaceae in the study area.

Life forms and cultivation status of the floral species

Off the total identified floral species, 43% ($n = 143$) of them were herbs, followed by trees (31%, $n = 101$), shrubs (20%, $n = 66$) and climbers (6%, $n = 21$). The herb species were mostly found in open areas and associated with shrubs, trees and climbers in the study area. Bhattarai (2019), Budha-Magar et al. (2020) and Bhandari et al. (2021) had also documented higher number of herb species in their studies in Nepal. A total of 176 species were recorded in the wild state and 155 species from cultivation state (Ornamental-75 species, Planted- 70 species and agriculture- 10 species) (Table 1).

CITES listed floral species

Out of the 154 CITES-listed plant species of Nepal (Joshi et al. 2017), four species (*Dalbergia latifolia*, *Dalbergia sissoo*, *Euphorbia royleana* and *Rauvolfia serpentina*) which are listed in Appendix-II of CITES were found in the study area. These species are facing higher risk of extinction due to over-harvesting throughout the world (Dwianto et al. 2019; Kunwar 2019; Abdullah and Rafay 2021). Hence, to protect their illegal trade and save them from extinction, these species are listed under CITES-II. These species serve as examples of protected species inside the campus.

Native, introduced and invasive alien floral species

Of the total, 193 species were native, 130 species were introduced and eight species were not specified their status (KATH 2020; POWO 2021). Out of the 26 naturalized invasive alien plant species found in Nepal (Shrestha 2019), 16 species were recorded from the study area. They are: *Ageratina adenophora*, *Ageratum conyzoides*, *Ageratum houstonianum*, *Alternanthera philoxeroides*, *Amaranthus spinosus*, *Bidens pilosa*, *Chromolaena odorata*, *Eichhornia crassipes*, *Galinsoga quadriradiata*, *Lantana camara*, *Mimosa pudica*, *Oxalis latifolia*, *Parthenium hysterophorus*, *Senna occidentalis*, *Senna tora* and *Spermacoce alata*. These invasive species are threats to plant diversity (Vitousek et al. 1997; Mooney and Hobbs 2000; Paini et al. 2016). These species were growing well in open areas, under the trees having low canopy cover and sides of the walking routes in the campus premises. The high number of butterflies could be seen on the flowers of species like; *Lantana camera*, *Bidens pilosa*, *Ageratina adenophora*, *Ageratum conyzoides*, and *Ageratum houstonianum* during the study period. These plant species might be beneficial for butterflies. However, these invasive species are gradually replacing native herbs and shrub species in the study area.

Usefulness of the floral species

Among the total species, about 68 species such as *Achyranthes aspera*, *Azaderachta indica*, *Terminalia chebula*, *Bryophyllum pinnatum*,

Cassia fistula etc. were used for medicinal proposes. 85 species of trees, shrubs and grasses (*Ficus glaberrima*, *Ficus auriculata*, *Leucaena leucocephala* etc.) were used for fodder, 15 species (*Bombax ceiba*, *Dalbergia sissoo* etc.) were used for timber, 81 species for ornamental, and other species were used for fuelwood, *hedging*, mulching, fruits, etc. Many floral species were found to be used for more than one proposes.

The presence of a large number of floral species in this small area might be due to the forest being conserved for study purposes, no grazing, no entry of local people and different plantation activities conducted around the campus premises which add new species. However, many mature tree species which are in few number are cut down which may cause loss of species diversity. Also access trails inside the forests may affect on ground vegetation diversity.

Conclusion

The study revealed that the Institute of Forestry, Pokhara Campus is rich (331 species) in floral diversity. The CITES-listed plants present there should be managed. The record of a large number of invasive alien plants species indicates the threats to native vegetation. Therefore, these invasive species should be managed with effective interventions to retain native plant diversity. This checklist will help to gain knowledge of floral species of this Campus, which we recommend to update at regular intervals.

References

- Abdullah, M., & Rafay, M. (2021). Ecology of *Dalbergia sissoo*. In *Dalbergia sissoo*, pp. 13-26.
- Abramovitz, J. N., & Gnan, P. (1998). Putting a value on nature's free services. *World Watch*, 11(1), 10-19.
- Adhikari, M. K. (2016). Revised checklist to the mycotaxa proposed from Nepal. *Bulletin of Department of Plant Resource*, 38, 1-11.
- Ahmad, F., Anwar, F., & Hira, S. (2016). Review on medicinal importance of Fabaceae family. *Pharmacology online*, 3, 151-157.
- Akinyemi, D. S., & Oke, S. O. (2014). Floristic composition and structural diversity of Shasha forest reserve in Ile-Ife, Southwestern Nigeria. *Notulae Scientia Biologicae*, 6(4), 433-440. doi: <https://doi.org/10.15835/nsb649373>
- Angelsen, A., Jagger, P., Babigumira, R., Belcher, B., Hogarth, N. J., Bauch, S., Borner, J., SmithHall, C., & Wunder. S. (2014). Environmental income and rural livelihoods: a global comparative analysis. *World Development*, 64, S12-S28. doi: <https://doi.org/10.1016/j.worlddev.2014.03.006>
- Baral, S. R. (1995). Enumeration of the Algae of Nepal. Biodiversity Profile Project, Publication No. 11. Department of National Parks & Wildlife Conservation, Government of Nepal.
- Bhandari, R., Miya, M. S., & Timilsina, S. (2021). Status and Diversity of Terrestrial plants in Ghodaghodi Lake Complex, Nepal. *International Journal of Applied Sciences and Biotechnology*, 9(1), 38-44. doi: <https://doi.org/10.3126/ijasbt.v9i1.35084>
- Bhatta, J. P. (2011). Species diversity and composition of Forest vegetation of Banpale danda forest, Kaski, Nepal. *LAP LAMBERT Academic Publishing*, 64p.
- Bhattarai, K. R. (2019). Enumeration of the flowering plants of Singha Durbar Premises, Kathmandu, Nepal. *Journal of Plant Resources*, 17, 69-81.
- Bhattarai, K. R., & Khadka, M. K. (2016). Ethnobotanical survey of medicinal plants from Ilam District, East Nepal. *Our Nature*, 14(1), 78-91. doi: <https://doi.org/10.3126/on.v14i1.16444>
- Bhattarai, P. K., Sharma, B., Neupane, A., Kunwar, S., & Dhungana, P. (2021). Bat diversity in the Banpale forest, Pokhara, Nepal during spring season. *Journal of Threatened Taxa*, 13(6), 18479-18489. doi: <https://doi.org/10.11609/jott.6263.13.6.18479-18489>
- Bhuju, U. R., Shakya, P. R., Basnet, T. B., & Shrestha, S. (2007). Nepal Biodiversity Resource Book: Protected Areas, Ramsar Sites and World Heritage Sites. International Centre for Integrated Mountain Development, Kathmandu, Nepal, 128p.
- Budha-Magar, S., Bhandari, P., & Ghimire, S. K. (2020). A Checklist of Flowering Plants of Jaljalâ Mountain and adjoining Areas, Rolpâ District, Western Nepal. *Journal of Plant Resources*, 18(1), 82-101.
- Catalogue of life. (2019). Indexing the known species of World. Published in www.catalogueoflife.org (accessed on 27 May 2021)
- Chaudhary, R. P., Uprety, Y., & Rimal, S. K. (2016). Deforestation in Nepal: Causes, consequences and responses. *Biological and Environmental hazards, risks, and disasters*, 335-372. doi: <http://dx.doi.org/10.1016/B978-0-12-394847-2.00020-6>
- Dhami, N. (2008). Ethnomedicinal uses of plants in Western Terai of Nepal: A case study of Dekhatbhuli VDC of Kanchanpur district. *Medicinal plants in Nepal: an anthology of contemporary research*, 165-177.
- Dwianto, W., Bahanawan, A., Kusumah, S. S., Darmawan, T., Amin, Y., Pramasari, D. A., Lestari, E., Akbar, F., & Sudarmanto. (2019). Study on the existence and characteristics of Sonokeling (*Dalbergia latifolia* Roxb) as an Appendix II CITES Wood. In *IOP Conference Series: Earth and Environmental Science*, 374(1), 012063p.
- Fraser-Jenkins, C. R., Kandel, D. R., & Pariyar, S. (2015). Ferns and Fern-allies of Nepal Volume 1. National Herbarium and Plant Laboratories, Department of Plant Resources. Ministry of Forests and Soil Conservation, Kathmandu, Nepal. 492p.
- Funk, V.A., Susanna, A., Stuessy, T. F., Bayer, R. J., & editors. (2009). Systematics, evolution and biogeography of Compositae. Vienna International Association for Plant Taxonomy.
- Gautam, D., Bhattarai, S., Sigdel, R., Jandug, C. M. B., Mujahid, A., & Gc, D. B. (2019). Climatic variability and wetland resources in Rupa Lake Catchment, Nepal. *North American Academic Research*, 2(12), 82-91. doi: <https://doi.org/10.5281/zenodo.3568477>
- Georgieva, N., Pachedjieva, K., & Lyubenova, M. (2013). SCI "Zapadna Stara Planina and

- Predbalkan”–floristic studies on xerothermic oak forests. *Bulgarian Journal of Agricultural Science*, 19(2), 218-221.
- Giri, T. K., Bhattacharya, P., & Santra, S. C. (2001). Ecology and economy of NTFPs in village life-A case study from Bankura District in West Bengal, India. *Annales of Forestry*, 9(1), 1-16.
- GoN/MoFSC. (2014). Nepal National Biodiversity Strategy and Action Plan 2014-2020. Ministry of Forest and Soil Conservation (MFSC), Kathmandu, Nepal.
- Govaerts, R. (2001). How many species of seed plants are there?. *Taxon*, 50(4), 1085-1090. doi: <https://doi.org/10.2307/1224723>
- Guerra García, J. M., Espinosa Torre, F., & García Gómez, J. C. (2008). Trends in taxonomy today: an overview about the main topics in taxonomy. *Zoológica baetica*, 19, 15-49. doi: <http://hdl.handle.net/11441/28285>
- Hill, J. L., & Curran, P. J. (2003). Area, shape and isolation of tropical forest fragments: effects on tree species diversity and implications for conservation. *Journal of biogeography*, 30(9), 1391-1403. doi: <https://doi.org/10.1046/j.1365-2699.2003.00930.x>
- Joshi, N., Dhakal, K. S., & Saud, D. S. (2017). Checklist of CITES Listed Flora of Nepal. Department of Plant Resources (DPR), Thapathali, Kathmandu, Nepal.
- Judd, W. S., Campbell, C. S., Kellogg, E. A., Stevens, P. F. & Donoghue, M. J. (1999). Plant systematics: a phylogenetic approach. *Ecología mediterránea*, 25(2), 215. https://digitalcommons.library.umaine.edu/fac_monographs/76
- KATH (National Herbarium and Plant Laboratories). (2020). Alien Flora of Nepal at KATH. Version 1.3. Department of Plant Resources, MoFE, Government of Nepal. Occurrence dataset. <https://doi.org/10.15468/enyzfx> (accessed on 29 September 2021)
- Kenrick, P., & Crane, P. R. (1997). The origin and early evolution of plants on land. *Nature*, 389(6646), 33-39. doi: <https://doi.org/10.1038/37918>
- Kost, G., & Adhikari, M. K. (2015). Mycota. In: Nepal: An Introduction to the Natural History, Ecology and Human Environment of the Himalayas, Miehe, G., Pendry, C. A. & Chaudhary, R. (eds.), Edinburgh: Royal Botanic Garden Edinburgh. pp. 203-210.
- Kunwar, B. B. (2019). Establishing *in situ* gene bank of *Rauwolfia serpentina* (L.) Benth ex Kurtz in Western Nepal with a focus on conservation and sustainability. *Biodiversity International Journal*, 3(4), 139-143.
- Kunwar, R., Shrestha, M. K., Dhungana, S. K., Shrestha, P. R., Shrestha, K. K. (2010). Floral Biodiversity of Nepal: an update. *Journal of Natural History Museum*, 25, 295-311.
- Kunzig, R. (2008). Are Hotspots the Key to Conservation. *Scientific American*, 18(4), 42-49. doi: <https://doi.org/10.1038/scientificamericanearth0908-42>
- Laidlaw, M., Kitching, R., Goodall, K., Small, A., & Stork, N. (2007). Temporal and spatial variation in an Australian tropical rainforest. *Austral Ecology*, 32(1), 10-20. doi: <https://doi.org/10.1111/j.1442-9993.2007.01739.x>
- Lamichhane, R., Gautam, D., Miya, M. S., Raut Chhetri, H. B., & Timilsina, S. (2021). Role of Non-Timber Forest Products in Local Economy: A Case of Jajarkot District, Nepal. *Grassroots Journal of Natural Resources*, 4(1), 94-105. doi: <https://doi.org/10.33002/nr2581.6853.040107>
- Miya, M. S., Timilsina, S., & Chhetri, A. (2020). Ethnomedicinal uses of plants by major ethnic groups of Hilly Districts in Nepal: A review. *Journal of Medicinal Botany*, 4, 24-37. doi: <https://doi.org/10.25081/jmb.2020.v4.6389>
- Mooney, H.A., & Hobbs, R. J. (eds.). (2000). Invasive Species in a Changing World. Island Press, Washington, D.C.
- Mora, C., Tittensor, D. P., Adl, S., Simpson, A. G., & Worm, B. (2011). How many species are there on Earth and in the ocean?. *PLoS biology*, 9(8), e1001127. doi: <https://doi.org/10.1371/journal.pbio.1001127>
- Murphy, S. T., Subedi, N., Jnawali, S. R., Lamichhane, B. R., Upadhyay, G. P., Kock, R., & Amin, R. (2013). Invasive mikania in Chitwan National Park, Nepal: the threat to the greater one-horned rhinoceros *Rhinoceros unicornis* and factors driving the invasion. *Oryx*, 47(3), 361-368. doi: <https://doi.org/10.1017/S003060531200124X>
- Myers, N., Mittermeier, R. A., Mittermeier, C. G., Da Fonseca, G. A., & Kent, J. (2000). Biodiversity hotspots for conservation priorities. *Nature*, 403(6772), 853-858. doi: <https://doi.org/10.1038/35002501>
- Öba, H., Iokawa, Y., & Šarmā, L. (2008). *Flora of Mustang, Nepal*. Kodansha Scientific.
- Paini, D. R., Sheppard, A. W., Cook, D. C., De Barro, P. J., Worner, S. P., & Thomas, M. B. (2016).

- Global threat to agriculture from invasive species. *Proceedings of the National Academy of Sciences*, 113(27), 7575-7579. doi: <https://doi.org/10.1073/pnas.1602205113>
- Pandey, N., & Ghimire, S. K. (2020). Floristic Diversity in a Community Managed Forest of Kanchanpur District, Western Nepal. *Journal of Plant Resource*, 18(1), 124-134.
- Pathak, R. P., & Baniya, C. B. (2017). Species diversity and tree carbon stock pattern in a community-managed tropical shorea forest in Nawalparasi, Nepal. *International Journal of Ecology and Environmental Sciences*, 42(5), 3-17.
- Pearce, N. R. & Cribb, P. J. (2002). *Flora of Bhutan*. Vol. 3, Part 3. Edinburgh, UK: Royal Botanic Garden.
- Polunin, O., & Stainton, J. D. A. (1984). *Flowers of the Himalaya*. New Delhi, India: Oxford University Press.
- POWO. (2021). *Plants of the World Online*. Facilitated by the Royal Botanic Gardens, Kew. Published on the Internet. <http://www.plantsoftheworldonline.org> (accessed on 29 September 2021)
- Pradhan, N. (2016). Bryophytes of Nepal. In: *Frontiers of Botany*, Jha, P.K., Siwakoti, M. and Rajbhandary, S. (eds.). Central Department of Botany, Tribhuvan University, Kathmandu, pp. 100-123.
- Prance, G. T. (2001). *Systematics: Relevance to the Twenty-first Century*. e LS. doi: <https://doi.org/10.1038/npg.els.0003608>
- Prasad, V. (2013). Biodiversity: Algae. In: *Biological Diversity and Conservation*, Jha, P. K., Neupane, F. P., Shrestha, M. L., & Khanal, I. P. (eds.). *Nepalpedia Series No.2*. NAST, pp. 97-103.
- Press, J. R., Shrestha, K. K., & Sutton, D. A. (2000). *Annotated checklist of the flowering plants of Nepal*. Natural History Museum Publications.
- Rajbhandari, K. R. (2016). History of botanical explorations in Nepal: 1802-2015. In: *Frontiers of Botany*, Jha, P. K., Siwakoti, M., & Rajbhandary, S. (eds.), Central Department of Botany, Tribhuvan University, Kathmandu, pp. 1-99.
- Rajbhandari, K. R., & Adhikari, M. K. (2009). Endemic flowering plants of Nepal. Part 1. Kathmandu, Nepal: Department of Plant Resources.
- Rajbhandari, K. R., & Dhungana, S. K. (2010). Endemic flowering plants of Nepal. Part 2. Kathmandu, Nepal: Department of Plant Resources.
- Rajbhandari, K. R., & Dhungana, S. K. (2011). Endemic flowering plants of Nepal. Part 3. Kathmandu, Nepal: Department of Plant Resources.
- Rajbhandari, K. R. (1976). History of botanical explorations in Nepal. *Journal of the Bombay Natural History Society*, 73(1), 468-481.
- Rajbhandari, K.R., Rai, S. K., Bhatt, G. D., Chhetri, R., & Khatri, S. (2017). *Flowering Plants of Nepal: An Introduction*. Department of Plant Resources, Kathmandu, Nepal, 432p.
- Rajbhandary, S. (2016). Fern and fern allies of Nepal. *Frontiers of Botany*, 124-150.
- Rajbhandary, S., & Winkler, D. (2015). *Ethnobotany. In: Nepal: An Introduction to the Natural History, Ecology and Human Environment of the Himalayas*, Miede, G., Pendry, C. A., & Chaudhary, R. (eds.), Edinburgh: Royal Botanic Garden Edinburgh. pp. 271-285.
- Rajbhandary, S., Siwakoti, M., Rai, S. k, & Jha, P. K. (2020). An Overview of Plant Diversity in Nepal. *Plant Diversity in Nepal, Botanical Society of Nepal, Kathmandu*, 1-15.
- Raskoti, B. B. (2009). *The Orchids of Nepal*. Kathmandu, Nepal: Quality Printers.
- Ribeiro, S., Fernandes, J. P., & Espírito-Santo, M. D. (2014). Diversity and floristic patterns of mediterranean grasslands: the relative influence of environmental and land management factors. *Biodiversity and conservation*, 23(12), 2903-2921. doi: <https://doi.org/10.1007/s10531-014-0754-y>
- Rokaya, M. B., Raskoti, B. B., Timsina, B., & Münzbergová, Z. (2013). An annotated checklist of the orchids of Nepal. *Nordic Journal of Botany*, 31(5), 511-550. doi: <https://doi.org/10.1111/j.1756-1051.2013.01230.x>
- Sahu, S. C., & Dhal, N. K. (2012). Floristic composition, diversity and status of Threatened medicinal plants in tropical forests of Malyagiri Hill Ranges, Eastern Ghats, India. *Tropical forests*, 203-214.
- Sakakibara, K. (2016). Technological innovations give rise to a new era of plant evolutionary developmental biology. *Advances in botanical research*, 78, 3-35. doi: <https://doi.org/10.1016/bs.abr.2016.01.001>
- Shackleton, C.M. and D. Pullanikkatil. 2019. Considering the links between non-timber forest products and poverty alleviation. In *Poverty Reduction Through Non-Timber Forest Products*, pp.15-28, Springer, Cham.

- doi: https://doi.org/10.1007/978-3-319-75580-9_2
- Shrestha, B. B. (2019). Management of Invasive Alien Plants in Nepal: Current Practices and Future Prospects. In *Tropical Ecosystems: Structure, Functions and Challenges in the Face of Global Change*, pp. 45-68. Springer, Singapore. doi: https://doi.org/10.1007/978-981-13-8249-9_4
- Shrestha, K. (1998). Dictionary of Nepalese plant names. Kathmandu, Nepal: Mandala Book Point.
- Shrestha, K. K. (2011). Plants, People and Environment: a web of life in the Himalayas. *TU Bulletin Special Issue*, 12, 57-67.
- Shrestha, K. K., & Bajracharya, S. B. (2019). Biodiversity in Nepal. In: Global Biodiversity, Vol 1 (Selected countries in Asia), Pullaiah, T. (ed.). Canada and USA: Apple Academic Press Inc., pp. 427-472.
- Shrestha, K. K., Bhattarai, S., & Bhandari, P. (2018). *Handbook of Flowering Plants of Nepal (Vol. 1 Gymnosperms and Angiosperms: Cycadaceae-Betulaceae)*. Scientific Publishers.
- Søchting, U. (2015). Lichens. In: Nepal: An Introduction to the Natural History, Ecology and Human Environment of the Himalayas, Miehe, G., Pendry, C. A., & Chaudhary, R. (eds.), Edinburgh: Royal Botanic Garden Edinburgh. pp. 191-199.
- Thapa, N., & Maharjan, M. (2014). Invasive alien species: Threats and challenges for biodiversity conservation-A case study of Annapurna Conservation Area, Nepal. Proceedings of the International Conference on Invasive Alien Species Management.
- Vallès, J., Canela, M. A., Garcia, S., Hidalgo, O., Pellicer, J., Sánchez-Jiménez, I., SiljakYakovlev, S., Vitales, D., Garnatje, T. (2013). Genome size variation and evolution in the family Asteraceae. *Caryologia: International Journal of Cytology, Cytosystematics and Cytogenetics*, 66(3), 221-235. doi: <https://doi.org/10.1080/00087114.2013.829690>
- Vitousek, P. M., D'antonio, C. M., Loope, L. L., Rejmanek, M., & Westbrooks, R. (1997). Introduced species: a significant component of human-caused global change. *New Zealand Journal of Ecology*, 1-16. doi: <https://www.jstor.org/stable/24054520>
- Watson, L., & Dallwitz, M. J. (1992). The families of flowering plants: descriptions, illustrations, identification, and information retrieval. (accessed on 3 June 2021)
- Watson, M. F., Mkiyama, S., Ikeda, H., Pendry, C., Rajbhandari, K. R., & Shrestha, K. K. (eds). (2011). Flora of Nepal, Vol. 3. Edinburgh, UK: The Royal Botanic Garden.
- World Conservation Monitoring Centre. (1992). Global biodiversity: Status of the Earth's Living Resources. Chapman and Hall. London.

Table 1: Floral species recorded from Institute of Forestry, Pokhara

S. N.	Scientific Name	Local Name	Common Name	Family Name	Habit and cultivation status	Status	Major uses
1	<i>Acacia auriculiformis</i> A. Cunn. ex Benth.	Auri	Earleaf acacia	Fabaceae	T; Planted	Introduced	Ornamental and fuelwood
2	<i>Acacia catechu</i> (L.f.) Willd.	Khayar	Cutch tree	Fabaceae	T; Wild	Native	Making katha and cutch
3	<i>Acalypha wilkesiana</i> Mull. Arg.	-	Copper leaf	Euphorbiaceae	Sh: Ornamental	Introduced	Ornamental
4	<i>Achyranthes aspera</i> L.	Datiwan	Chaff flower	Amaranthaceae	H; Wild	Native	Medicinal
5	<i>Acmella paniculata</i> (Wall ex. DC.) R.K. Jansen	Marethi	Panicked spot flower	Asteraceae	H; Wild	Native	Fodder
6	<i>Adhatoda vasica</i> Nees	Asuro	Malabar nut	Acanthaceae	Sh; Wild	Native	Mulching and medicinal
7	<i>Adiantum philippense</i> L.	Unyiu	Walking Maidenhair fern	Pteridaceae	H; Wild	Native	Medicinal
8	<i>Adiantum caudatum</i> Klotzsch	Unyiu	Tailed Maidenhair fern	Pteridaceae	H; Wild	Native	Medicinal
9	<i>Aegle marmelos</i> (L.) Correa	Bel	Stone apple	Rutaceae	T; Wild	Native	Fruits edible and leaves for religious propose.
10	<i>Aeschynanthus parviflorus</i> C.B. Clarke	Thirjo	Sikkim Blushwort	Gesneriaceae	H; Wild	Native	Medicinal
11	<i>Agave americana</i> L.	Ketuki	Century plant	Asparagaceae	H; Ornamental	Introduced	Hedging and ornamental
12	<i>Ageratina adenophora</i> (Spreng.) Kinh & H.Rob	Banmara	Mexican Devil	Asteraceae	H; Wild	Introduced (invasive)	No use
13	<i>Ageratum conyzoides</i> L.	Seto Gandhe	Chick weed	Asteraceae	H; Wild	Introduced (invasive)	Fodder

		Nilo Gandhe	Floss flower	Asteraceae	H; Wild	Introduced (invasive)	Fodder
14	<i>Ageratum houstonianum</i> Mill.						
15	<i>Aglaomorpha quercifolia</i> (L.) Hovenkamp & S. Linds	Kammaru	Oakleaf fern	Polypodiaceae	H; Wild	Native	Rhizome edible
16	<i>Alangium chinense</i> (Lour.) Harms	Firfire	Chinese alangium	Cornaceae	T; Wild	Native	Fodder
17	<i>Albizia chinensis</i> (Osbeck) Merr. Timber and fuelwood	Rato Siris	Chinese albizia	Fabaceae	T; Planted	Native	
18	<i>Albizia lebeck</i> (L.) Benth.	Kalo Siris	Lebbek tree	Fabaceae	T; Planted	Native	Fodder and fuelwood
19	<i>Albizia procera</i> (Roxb.) Benth.	Seto Siris	White siris	Fabaceae	T; Planted	Native	Timber and fuelwood
20	<i>Alnus nepalensis</i> D. Don	Uttis	Nepalese alder	Betulaceae	T; Wild	Native	Fuelwood and land reclamation
21	<i>Aloe vera</i> (L.) Burm. F	Ghiu kumari	Aloe vera	Liliaceae	H; Ornamental	Introduced	Medicinal
22	<i>Alstonia scholaris</i> (L.) R. Br.	Chattiwan	Blackboard tree	Apocynaceae	T; Wild	Native	Medicinal
23	<i>Alternanthera philoxeroides</i> (Mart.) Griseb.	Jal jambu	Alligator weed	Amaranthaceae	H; Wild	Introduced (invasive)	Fodder
24	<i>Alternanthera sessilis</i> (L.) R. Br ex DC.	Bhiringi jhar	Sessile joyweed	Amaranthaceae	H; Wild	Introduced	Medicinal
25	<i>Amaranthus caudatus</i> L.	Lunde	Pendant amaranth	Amaranthaceae	H; Ornamental	Introduced	Ornamental
26	<i>Amaranthus spinosus</i> L.	Kande Lunde	Spiny pigweed	Amaranthaceae	H; Wild	Introduced (invasive)	Leaves for curry
27	<i>Amaranthus viridis</i> L.	Lunde saag	Slender amaranth	Amaranthaceae	H; Wild	Introduced	Leaves for curry
28	<i>Anisomeles indica</i> (L.) Kuntze	Rato charpaate	Catmint	Lamiaceae	H; Wild	Native	Fodder
29	<i>Anthocephalus cadamba</i> Miq.	Kadam	Burflower tree	Rubiaceae	T; Wild	Unspecified	Fruits edible and fuelwood

30	<i>Antidesma acidum</i> Retz.	Archal	Sour current shrub	Phyllanthaceae	Sh; Wild	Native	Fodder and edible fruits
31	<i>Araucaria columnaris</i> J.R. Forst Hook.	Christmas tree	Christmas tree	Araucariaceae	T; Ornamental	Introduced	Ornamental
32	<i>Ardisia macrophylla</i> Reinw. ex Blume	Damai fal	Coral berry	Primulaceae	Sh; Wild	Unspecified	Fodder
33	<i>Argyrea nervosa</i> (Burm.f.) Bojer	Samudra phul	Elephant creeper	Convolvulaceae	Cl; Ornamental	Native	Ornamental
34	<i>Arisaema speciosum</i> (Wall.) Mart.	Sarpa ko makai	Cobra lilly	Araceae	H; Wild	Native	Medicinal
35	<i>Artemisia indica</i> Willd.	Titepati	Mugwort	Asteraceae	H; Wild	Native	Medicinal and mulching
36	<i>Artocarpus heterophyllus</i> Lam.	Katahar	Jack fruit	Moraceae	T; Planted	Introduced	Fruits edible.
37	<i>Artocarpus lakoocha</i> Roxb.	Badahar	Monkey jack	Moraceae	T; Planted	Native	Fodder
38	<i>Arundinella nepalensis</i> Trin.	Furke khar	Nepal reedgrass	Poaceae	H; Wild	Native	Fodder
39	<i>Asparagus racemosus</i> Willd.	Kurilo	Satawari	Asparagaceae	Sh; Agriculture	Native	Medicinal and edible
40	<i>Asplenium normale</i> D.Don	-	Rainforest spleenwort	Aspleniaceae	H; Wild	Native	Medicinal
41	<i>Athyrium filix-femina</i> (L.) Roth	Unyiu	Lady fern	Athyriaceae	H; Wild	Unspecified	Medicinal
42	<i>Aucuba japonica</i> Thunb.	-	Gold dust plant	Garryaceae	Sh; Ornamental	Introduced	Ornamental
43	<i>Axonopus compressus</i> (Sw.) P.Beauv.	Makai banso	Carpet grass	Poaceae	H; Wild	Introduced	Fodder
44	<i>Azadirachta indica</i> A. Juss.	Neem	Neem	Meliaceae	T; Planted	Introduced	Medicinal
45	<i>Bambusa sp.</i> Schreb.	Bans	Bamboo	Poaceae	H; Planted	Native	Construction material
46	<i>Barleria cristata</i> L.	Bhende kuro	Philippine violet	Acanthaceae	Sh; Wild	Native	Fodder
47	<i>Bauhinia purpurea</i> L.	Tanki	Butterfly tree	Fabaceae	T; Planted	Native	Fodder
48	<i>Bauhinia variegata</i> (L.) Benth.	Koiralo	Orchid tree	Fabaceae	T; Planted	Native	Fodder

49	<i>Bidens pilosa</i> L.	Kalo Kuro	Black-jack	Asteraceae	H; Wild	Introduced (invasive)	Fodder
50	<i>Blechnum corbassonii</i> Brownlie	Unyiu		Aspleniaceae	H; Wild	Unspecified	Medicinal
51	<i>Boehmeria platyphylla</i> D.Don	Kamle		Urticaceae	Sh; Wild	Native	Fodder
52	<i>Bombax ceiba</i> L.	Simal	Cotton tree	Malvaceae	T; Wild	Native	Making light furniture
53	<i>Bougainvillea spectabilis</i> Willd.	Bagam Beli	Bougainvillea	Nyctaginaceae	Cl; Ornamental	Introduced	Ornamental
54	<i>Breynia</i> sp. J.R. Frost & G.Frost	Nundhiki	Iron range	Phyllanthaceae	Sh; Wild	Native	Fodder
55	<i>Bridelia retusa</i> (L.) A.Juss	Gayo	Spinous kino tree	Phyllanthaceae	T; Planted	Native	Fodder
56	<i>Brugmansia</i> Pers.	Dhokre phul	Angel's trumpets	Solanaceae	Sh; Ornamental	Introduced	Ornamental
57	<i>Bryophyllum pinnatum</i> (Lam.) Oken	Ajambari	Miracle plant	Crassulaceae	H; Ornamental	Native	Medicinal
58	<i>Buddleja asiatica</i> Lour.	Bhimsen pati	White butterfly bush	Scrophulariaceae	Sh; Wild	Native	Leaves are used for fish poisoning.
59	<i>Caladium bicolor</i> (Aiton) Vent.	Karkala phul	Caladium	Araceae	H; Ornamental	Introduced	Ornamental
60	<i>Callistemon citrinus</i> Skeels	Kalki Phul	Crimson bottlebrush	Myrtaceae	T; Ornamental	Introduced	Ornamental
61	<i>Calotropis gigantea</i> (L.) W.T. Aiton	Aank	Crown flower	Apocynaceae	Sh; Ornamental	Native	Medicinal
62	<i>Campsis radicans</i> Seem.	-	Trumpet Creeper	Bignoniaceae	Cl; Ornamental	Introduced	Ornamental
63	<i>Canna indica</i> L.	Sarbada phul	Indian shot	Cannaceae	H; Ornamental	Introduced	Ornamental
64	<i>Cannabis sativa</i> L.	Gaja	Marijuana	Cannabaceae	Sh; Agriculture	Introduced	Medicinal
65	<i>Capsicum</i> sp. L.	Khursani	Chilli	Solanaceae	Sh; Agriculture	Introduced	Fruits edible

66	<i>Carduus nutans</i> L.	-	Musk thistle	Asteraceae	H; Wild	Introduced	Medicinal
67	<i>Carica papaya</i> L.	Mewa	Papaya	Caricaceae	T; Planted	Introduced	Fruits edible
68	<i>Cascabela thevetia</i> (L.) Lippold	Kaner	Yellow oleander	Apocynaceae	Sh; Ornamental	Introduced	Ornamental
69	<i>Casearia graveolens</i> Dalzell	Badkaule	Chilla	Salicaceae	T; Wild	Native	Fodder
70	<i>Cassia fistula</i> L.	Raj brikshaya	Golden shower	Fabaceae	T; Ornamental	Native	Medicinal
71	<i>Cassia javanica</i> L.	Kasood	Java cassia	Fabaceae	T; Ornamental	Introduced	Ornamental
72	<i>Cassia tora</i> L.	Sano Tapre	Sickle senna	Fabaceae	H; Wild	Introduced	Medicinal
73	<i>Castanopsis indica</i> (Roxb. ex. Lindl) A.DC	Dhale katus	Indian chestnut	Fagaceae	T; Wild	Native	Fuelwood, fodder and mulching
74	<i>Catharanthus roseus</i> (L.) G.Don	Sadabahr ful	Cape periwinkle	Apocynaceae	H; Ornamental	Introduced	Ornamental
75	<i>Cedrela toona</i> (Roxb. ex Rottler)	Tooni	Red cedar	Meliaceae	T; Wild	Native	Timber, fodder and used to make bee-hive
76	<i>Ceiba pentandra</i> (L.) Gaertn.	Kapok	Java kapok	Malvaceae	T; Planted	Introduced	Timber
77	<i>Celosia cristata</i> L.	Bhale phul	Cockscomb	Amaranthaceae	H; Ornamental	Introduced	Ornamental
78	<i>Centella asiatica</i> (L.) Urban	Ghod Taapre	Indian pennywort	Apiaceae	H; Wild	Native	Medicinal
79	<i>Cestrum nocturnum</i> L.	Raat ki rani	Night blooming jessamine	Solanaceae	Sh; Ornamental	Introduced	Ornamental
80	<i>Cheilanthes bicolor</i> (Roxb.) Fraser-Jenk.	Rani sinki	Silver fern	Pteridaceae	H; Wild	Native	Medicinal
81	<i>Cheilocostus speciosus</i> (J.Konig) C.Specht	Bet lauri	Crepe ginger	Costaceae	H; Wild	Native	Ornamental
82	<i>Chenopodium album</i> L.	Bethe	Goosefoot	Amaranthaceae	H; Wild	Introduced	Leaves edible

83	<i>Choerospondias axillaris</i> (Roxb.) B.L. Burt & A.W. Hill	Lapsi	Nepali hog plum	Anacardiaceae	T; Planted	Native	Fruits edible and used to make pickle
84	<i>Chromolaena odorata</i> (L.) R.M.King & H.Rob.	Banmara	Siam weed	Asteraceae	Sh; Wild	Introduced (invasive)	Mulching
85	<i>Chrysanthemum indicum</i> L.	Godawari	Indian chrysanthemum	Asteraceae	H; Ornamental	Native	Ornamental
86	<i>Chrysothemis pulchella</i> (Donn ex Sims) Decne.	-	Black flamingo	Gesneriaceae	H; Wild	Introduced	Ornamental
87	<i>Cinnamomum camphora</i> (L.) J.Presl.	Kapur	Camphor tree	Lauraceae	T; Planted	Introduced	Ornamental
88	<i>Cinnamomum tamala</i> (Buch.- Ham) T. Nees & Eberm.	Dalchini	Indian bay leaf	Lauraceae	T; Planted	Native	Spices
89	<i>Cissampelos pareira</i> L.	Batul Paate	Velvet leaf	Menispermaceae	Cl; Wild	Introduced	Medicinal
90	<i>Citrus limon</i> (L.) Osbeck	Kagati	Lemon	Rutaceae	T; Planted	Introduced	Fruits edible
91	<i>Citrus medica</i> L.	Bimiro	Citron	Rutaceae	T; Planted	Native	Fruits edible
92	<i>Citrus reticulata</i> Blanco.	Suntala	Orange	Rutaceae	T; Planted	Introduced	Fruits edible
93	<i>Cleome viscosa</i> L.	Hurhure	Tick weed	Cleomaceae	H; Wild	Native	Medicinal
94	<i>Clerodendrum infortunatum</i> L.	Bhat	Hill glory bower	Lamiaceae	Sh; Wild	Native	Fodder
95	<i>Clerodendrum thomsoniae</i> Balf.f.	-	Bleeding heart vine	Lamiaceae	Cl; Ornamental	Introduced	Ornamental
96	<i>Coffea arabica</i> L.	Coffee	Arabian coffee	Rubiaceae	Sh; Agriculture	Introduced	Fruits edible
97	<i>Colebrookea oppositifolia</i> Sm.	Dhursuli	Indian squirrel tail	Lamiaceae	Sh; Wild	Introduced	Leaves are used for ripening of banana.
98	<i>Coleus</i> sp. Lour.	-	Coleus	Lamiaceae	H; Ornamental	Native	Ornamental
99	<i>Colocasia esculenta</i> (L.) Schott	Karkalo	Taro	Araceae	H; Agriculture	Native	Edible
100	<i>Commelina benghalensis</i> L.	Kane	Bengal dayflower	Commelinaceae	H; Wild	Native	Fodder

		Bohari	Glue berry	Boraginaceae	T; Planted	Native	Fodder
101	<i>Cordia dichotoma</i> G.Forst.		Glue berry	Boraginaceae	T; Planted	Native	Fodder
102	<i>Cordyline fruticosa</i> (L.) A.Chev.	-	Ti plant	Asparagaceae	Sh; Ornamental	Introduced	Ornamental
103	<i>Coreopsis grandiflora</i> Nutt. ex Chapm.	-	Large-flowered tickseed	Asteraceae	H; Ornamental	Introduced	Ornamental
104	<i>Cosmos sulphureus</i> Cav.	Putali phul	Sulfur cosmos	Asteraceae	H; Ornamental	Introduced	Ornamental
105	<i>Crassocephalum crepidioides</i> (Benth.) S.Moore.	Anikale jhar	Fireweed	Asteraceae	H; Wild	Introduced	Medicinal
106	<i>Crocotmia crocosmiiflora</i> (Lemoine) N.E.Br.	-	Montbretia	Iridaceae	H; Ornamental	Introduced	Ornamental
107	<i>Cuphea hyssopifolia</i> kunth	-	Elfin herb	Lythraceae	H; Ornamental	Introduced	Ornamental
108	<i>Cupressus torulosa</i> D.Don ex Lamb.	Dhupi	Himalayan cyperus	Cupressaceae	T; Ornamental	Native	Ornamental
109	<i>Curculigo</i> sp. Gaertn.	Musli		Hypoxidaceae	H; Wild	Native	Medicinal
110	<i>Curcuma</i> sp. L.	Haledo		Zingiberaceae	H; Wild	Native	Medicinal
111	<i>Cyanthillium cinereum</i> (L.) H.Rob.	Sahadevi	Little ironweed	Asteraceae	H; Wild	Native	Medicinal
112	<i>Cycas revoluta</i> Thunb.	Cycas	Sago palm	Cycadaceae	T; Ornamental	Introduced	Ornamental
113	<i>Cyclea</i> sp. Arn. Ex Wight	-		Menispermaceae	Cl; Wild	Introduced	Fodder
114	<i>Cymbidium</i> sp. Swartz	-	Boat orchid	Orchidaceae	H; Wild	Native	Medicinal
115	<i>Cymbopogon citratus</i> (DC.) Stapf	Kagati ghas	Lemon grass	Poaceae	H; Planted	Native	Used in tea
116	<i>Cynodon dactylon</i> (L.) Pers.	Dubo	Bermuda grass	Poaceae	H; Wild	Native	Medicinal and used in marriage ceremony
117	<i>Cynoglossum lanceolatum</i> Forssk.	Kuro	lanceleaf	Boraginaceae	H; Wild	Native	Medicinal
118	<i>Cyperus cyperoides</i> (L.) Kuntze	Karaunte	Common flat sedge	Cyperaceae	H; Wild	Native	Fodder
119	<i>Cyperus niveus</i> Retz.	Seto mothe	Snow white sedge	Cyperaceae	H; Wild	Native	Fodder

120	<i>Cyperus rotundus</i> L.	Mothe	Java grass	Cyperaceae	H; Wild	Native	Fodder
121	<i>Dahlia</i> sp. Cav.	Lahure phul	Dahlia	Asteraceae	H; Ornamental	Introduced	Ornamental
122	<i>Dalbergia latifolia</i> Roxb.	Satisal	Rosewood	Fabaceae	T; Planted	Native	Timber
123	<i>Dalbergia sissoo</i> Roxb.	Sissoo	North Indian rosewood	Fabaceae	T; Planted	Native	Timber
124	<i>Datura metel</i> L.	Dhaturo	Angel's trumpet	Solanaceae	Sh; Ornamental	Introduced	Medicinal
125	<i>Delonix regia</i> (Boj. ex. Hook.) Raf.	Gul Mohar	Flame tree	Fabaceae	T; Planted	Introduced	Ornamental
126	<i>Dendrobium</i> sp. Sw.	-		Orchidaceae	H; Wild	Native	Medicinal
127	<i>Desmostachya bipinnata</i> (L.) Stapf	Kush	Half grass	Poaceae	H; Wild	Native	Religious proposes
128	<i>Dicranopteris linearis</i> (Burm.f.) Underw	Unyiu	False staghorn fern	Gleicheniaceae	H; Wild	Native	Medicinal
129	<i>Digitaria</i> sp. Haller	-	Crab grass	Poaceae	H; Wild	Native	Fodder
130	<i>Dioscorea bulbifera</i> L.	Githa	Potato yam	Dioscoreaceae	Cl; Wild	Native	Edible
131	<i>Dioscorea deltoidea</i> Wall. ex Griseb.	Kukur tarul	Nepal yam	Dioscoreaceae	Cl; Wild	Native	Edible
132	<i>Dioscorea kamoensis</i> Kunth	Tyaguna		Dioscoreaceae	Cl; Wild	Native	Edible
133	<i>Diospyros montana</i> Roxb.	Teeju	Bombay ebony	Ebenaceae	T; Wild	Native	Timber and fruits edible
134	<i>Diplazium esculentum</i> (Retz.) Sw.	Niuro	Vegetable fern	Athyriaceae	H; Wild	Native	Edible
135	<i>Diploknema butyracea</i> (Roxb.) H.J.Lam.	Chiuri	Indian butter tree	Sapotaceae	T; Planted	Native	Fruits edible
136	<i>Dracaena reflexa</i> Lam.	-	Song of India	Asparagaceae	H; Ornamental	Introduced	Ornamental
137	<i>Dracaena trifasciata</i> (Prain) Mabb.	Snake plant	Snake plant	Asparagaceae	H; Ornamental	Introduced	Ornamental

138	<i>Drepanostachyum intermedium</i> (Munro) Keng f.	Nigalo	Intermediate cane bamboo	Poaceae	H; Wild	Native	Construction proposes and making gate during marriage.
139	<i>Drymaria cordata</i> (L.) Roem. & Schult.	Abhijalo	Tropical chickweed	Caryophyllaceae	H; Wild	Introduced	Medicinal
140	<i>Duchesnea indica</i> (Andrews) Teschem.	Bhui Kafal	False strawberry	Rosaceae	H; Wild	Native	Fruits edible
141	<i>Duranta erecta</i> L.	Nilkada	Golden Dewdrop	Verbenaceae	Sh; Ornamental	Introduced	Ornamental
142	<i>Eichhornia crassipes</i> (Mart.) Solms	Jalkumbhi	Water hyacinth	Pontederiaceae	H, Wild	Introduced (invasive)	Ornamental
143	<i>Elaeocarpus sphaericus</i> (Gaertn.) K.Schum	Rudraksha	Rudraksha	Elaeocarpaceae	T; Planted	Native	Medicinal
144	<i>Elatostema</i> sp. J.R.Frost & G.Frost	Gagleto	-	Urticaceae	H; Wild	Native	Fodder
145	<i>Eleusine indica</i> (L.) Gaertn.	Kodo ghas	Goosegrass	Poaceae	H; Wild	Native	Fodder
146	<i>Emilia sonchifolia</i> (L.) DC. ex Wight	Mula paate	Tassel flower	Asteraceae	H; Wild	Native	Medicinal
147	<i>Engelhardia spicata</i> Lesch. ex Blume	Mauwa	Mauwa	Juglandaceae	T; Wild	Native	Flowers used for fish poisoning
148	<i>Equisetum debile</i> Roxb. ex Vaucher	Sime jhar	Branched horsetail	Equisetaceae	H; Wild	Native	Fodder
149	<i>Erigeron canadensis</i> L.	-	Horseweed	Asteraceae	H; Wild	Introduced	Fodder
150	<i>Eryngium foetidum</i> L.	Ban dhaniya	Cilantro	Apiaceae	H; Wild	Introduced	Leaves edible
151	<i>Erythrina stricta</i> Roxb.	Phaledo	Indian coral tree	Fabaceae	T; Wild	Native	Land reclamation
152	<i>Eucalyptus camaldulensis</i> Dehnh.	Masala	River red gum	Myrtaceae	T; Planted	Introduced	Fuelwood
153	<i>Eulaliopsis binata</i> (Retz.) C.E. Hubb.	Babiyo	Sabai grass	Poaceae	H; Wild	Native	Making rope

154	<i>Euphorbia hirta</i> L.	Dudhe jhar	Asthma plant	Euphorbiaceae	H; Wild	Introduced	Medicinal
155	<i>Euphorbia milii</i> Des Moul.	Christ plant	Christ plant	Euphorbiaceae	Sh: Ornamental	Introduced	Ornamental
156	<i>Euphorbia pulcherrima</i> Willd. ex. Klotzsch	Lalupaate	Poinsettia	Euphorbiaceae	Sh: Ornamental	Introduced	Ornamental
157	<i>Euphorbia royleana</i> Boiss.	Siundi	Royle's spurge	Euphorbiaceae	Sh: Ornamental	Native	Hedging
158	<i>Ficus auriculata</i> Lour.	Nimaro	Elephant ear fig	Moraceae	T; Planted	Native	Fodder
159	<i>Ficus benghalensis</i> L.	Bar	Banyan fig	Moraceae	T; Planted	Native	Planted in chautara and religious proposes
160	<i>Ficus benjamina</i> L.	Sami	Weeping fig	Moraceae	T; Planted	Native	Planted in chautara and religious proposes
161	<i>Ficus carica</i> L.	Anjeer	Common fig	Moraceae	T; Wild	Unspecified	Fodder
162	<i>Ficus clavata</i> Wall. & Miq.	Bedulo		Moraceae	T; Planted	Native	Fodder
163	<i>Ficus elastica</i> Roxb.	Rubber	Rubber fig	Moraceae	T; Planted	Native	Ornamental
164	<i>Ficus glaberrima</i> Blume	Pakhuri		Moraceae	T; Planted	Native	Fodder
165	<i>Ficus hispida</i> L.	Thotne	Opposite leaf fig	Moraceae	T; Planted	Native	Fodder
166	<i>Ficus lacor</i> Buch.-Ham.	Kabhro	Java fig	Moraceae	T; Planted	Native	Fodder
167	<i>Ficus pumila</i> L.	-	Climbing fig	Moraceae	Cl; Wild	Introduced	Fodder
168	<i>Ficus racemosa</i> L.	Dumri	Cluster fig	Moraceae	T; Planted	Native	Fodder
169	<i>Ficus religiosa</i> L.	Peepal	Peepal	Moraceae	T; Planted	Native	Planted in chautara and religious proposes
170	<i>Ficus semicordata</i> Buch.-Ham. ex Sm.	Khanyu	Drooping fig	Moraceae	T; Planted	Native	Fodder
171	<i>Fimbristylis falcata</i> (Vahl) Kunth	Pani mothe	-	Cyperaceae	H; Wild	Native	Fodder

188	<i>Hydrangea</i> sp. L.	Hydrangea	Hydrangea	Hydrangeaceae	Sh; Ornamental	Native	Ornamental
189	<i>Impatiens balsamina</i> L.	Tiuree	Balsam	Balsaminaceae	H; Ornamental	Introduced	Ornamental
190	<i>Imperata cylindrica</i> (L.) P. Beauv.	Siru	Cogon grass	Poaceae	H; Wild	Introduced	Fodder
191	<i>Indigofera</i> sp. L.	Phusre ghas	Indigo	Fabaceae	Sh; Wild	Native	Fodder
192	<i>Inula cappa</i> (Buch.-Ham.) DC.	Gai tilhare	Sheep's ear	Asteraceae	Sh; Wild	Native	Ornamental
193	<i>Ipomoea batatas</i> (L.) Lam.	Sakharkhanda	Sweet potato	Convolvulaceae	Cl; Wild	Introduced	Edible
194	<i>Ipomoea quamoclit</i> L.	Kamalata	Cypress vine	Convolvulaceae	Cl; Wild	Introduced	No use
195	<i>Iris domestica</i> (L.) Goldblatt & Mabb.	Padam pushkar	Leopard lily	Iridaceae	H; Ornamental	Native	Ornamental
196	<i>Ixora</i> sp. L.	Rukmini	Jungle flame	Rubiaceae	Sh; Ornamental	Native	Ornamental
197	<i>Jacaranda mimosifolia</i> D. Don	Birendra phul	Blue Jacaranda	Bignoniaceae	T; Ornamental	Introduced	Ornamental
198	<i>Jasminum sambac</i> (L.) Aiton	Chameli	Arabian jasmine	Oleaceae	Sh; Ornamental	Introduced	Ornamental
199	<i>Jasminum</i> sp. L.	Jasmine	Jasmine	Oleaceae	Sh; Wild	Native	Hedging
200	<i>Jatropha curcas</i> L.	Sajjiwan	Physic nut	Euphorbiaceae	Sh; Ornamental	Introduced	Hedging and medicinal
201	<i>Kyllinga</i> sp. Rottb.	-	Kyllinga weed	Cyperaceae	H; Wild	Native	Fodder
202	<i>Lagerstroemia indica</i> (L.) Pers.	Asare phul	Crepe myrtle	Lythraceae	Sh; Ornamental	Native	Ornamental
203	<i>Lantana camara</i> L.	Banmara	Wild-sage	Verbenaceae	Sh, Wild	Introduced (invasive)	No use
204	<i>Lepidagathis incurva</i> Buch.-Ham. ex. D. Don	Seto phuli	Curved lepidogathis	Acanthaceae	H; Wild	Native	Fodder
205	<i>Lepisorus nudus</i> (Hook.) Ching	-	-	Polyodiaceae	H; Wild	Native	No use
206	<i>Leucaena leucocephala</i> (Lam.) de. Wit	Ipil-ipil	Ipil-ipil	Fabaceae	T; Planted	Introduced	Fodder

207	<i>Litchi chinensis</i> Sonn.	Litchi	Litchi	Sapindaceae	T; Planted	Introduced	Edible
208	<i>Litsea monopetala</i> (Roxb.) Pers.	Kutmero	Many-flowered litsea	Lauraceae	T; Planted	Native	Fodder
209	<i>Machilus sp.</i> Nees	Kaulo		Lauraceae	T; Wild	Native	Medicinal
210	<i>Macropanax undulatus</i> (Wall ex. G. Don) Seem.	Chinde		Araliaceae	T; Planted	Native	Fodder
211	<i>Malvaviscus arboreus</i> Cav.	Khursani phul	Wax mallow	Malvaceae	Sh; Ornamental	Introduced	Ornamental
212	<i>Mangifera indica</i> L.	Aanp	Mango	Anacardiaceae	T; Planted	Introduced	Fruits edible
213	<i>Melastoma malabathricum</i> L.	Angeri	Indian rhododendron	Melastomataceae	Sh; Wild	Native	Fruits edible
214	<i>Melia azedarach</i> L.	Bakaino	Chinaberry tree	Meliaceae	T; Planted	Native	Fodder
215	<i>Mentha spicata</i> L.	Pudina	Spearmint	Lamiaceae	H; Agriculture	Native	Edible
216	<i>Michelia champaca</i> L.	Champ	Golden champa	Magnoliaceae	T; Planted	Native	Timber
217	<i>Millettia extensa</i> (Benth.) Baker	Gaujo	Large-leaf pongam creeper	Fabaceae	Cl; Wild	Native	Fodder
218	<i>Mimosa pudica</i> L.	Lajawati	Touch-me-not	Fabaceae	H; Wild	Introduced (invasive)	Medicinal and fodder
219	<i>Mimosa rubicaulis</i> Lam.	Arari kada	South-Indian mimosa	Fabaceae	Sh; Wild	Native	Fodder
220	<i>Mirabilis jalapa</i> L.	Malati phul	Four o'clock plant	Nyctaginaceae	H; Ornamental	Introduced	Ornamental
221	<i>Monstera deliciosa</i> Liebm.	Karchena	Swiss cheese plant	Araceae	Cl; Ornamental	Introduced	Ornamental
222	<i>Moringa oleifera</i> Lam.	Shitalchini	Drumstick tree	Moringaceae	T; Planted	Introduced	Medicinal
223	<i>Morus alba</i> L.	Kimbu	Common mulberry	Moraceae	T; Planted	Native	Fodder
224	<i>Murraya koenigii</i> (L.) Spreng.	Mitho neem	Curry tree	Rutaceae	Sh; Wild	Native	Medicinal

225	<i>Musa paradisiaca</i> L.	Kera	Banana	Musaceae	H; Agriculture	Introduced	Edible
226	<i>Mussaenda macrophylla</i> Wall.	Dhobini	Sweet root	Rubiaceae	Sh; Wild	Native	Fodder
227	<i>Nephrolepis cordifolia</i> (L.) K. Presl	Pani amala	Fishbone fern	Nephrolepidaceae	H; Wild	Native	Ornamental
228	<i>Nerium oleander</i> L.	Karbir	Nerium	Apocynaceae	Sh; Ornamental	Native	Ornamental
229	<i>Nyctanthes arbor-tristis</i> L.	Parijat	Parijat	Oleaceae	T; Ornamental	Native	Ornamental
230	<i>Oberonia pachyrachis</i> Rchb.f. ex Hook.f.	-	Thick spine oberonia	Orchidaceae	H; Wild	Native	No use
231	<i>Ocimum tenuiflorum</i> L.	Tulsi	Holy basil	Lamiaceae	H; Planted	Native	Medicinal
232	<i>Oplismenus hirtellus</i> (L.) P.Beauv.	-	Basket grass	Poaceae	H; Wild	Introduced	Fodder
233	<i>Oroxylum indicum</i> (L.) Benth. ex Kurz	Tatelo	Indian trumpet flower	Bignoniaceae	T; Wild	Native	Fodder
234	<i>Osbeckia nepalensis</i> Hook.	Seto chulsi	Nepal osbeckia	Melastomataceae	Sh; Wild	Native	Medicinal
235	<i>Oxalis corniculata</i> L.	Chariamilo	Creeping wood sorrel	Oxalidaceae	H; Wild	Introduced	Medicinal
236	<i>Oxalis latifolia</i> Kunth	Chariamilo	Garden pink sorrel	Oxalidaceae	H; Wild	Introduced	Medicinal
237	<i>Pandanus nepalensis</i> H.St.John	Taarika	Screw palm	Pandanaceae	T; Wild	Native	Ornamental
238	<i>Parthenium hysterophorus</i> L.	Kanike	Santa maria feverfew	Asteraceae	H; Wild	Introduced (Invasive)	No use
239	<i>Paspalum dilatatum</i> Poir.	Banso	Dallis grass	Poaceae	H; Wild	Introduced	Fodder
240	<i>Pelargonium</i> sp. L.Her.	-	Storkbills	Geraniaceae	H; Ornamental	Introduced	Ornamental
241	<i>Peperomia pellucida</i> Kunth.	Latpatay	Peper elder	Piperaceae	H; Wild	Introduced	Fodder
242	<i>Perilla frutescens</i> (L.) Britton	Silam	Perilla	Lamiaceae	Sh; Agriculture	Native	Seeds edible
243	<i>Persea americana</i> Mill.	Avocado	Avocado	Lauraceae	T; Planted	Native	Fruits edible
244	<i>Persicaria chinensis</i> L.H. Gross	Kukur thotne	Creeping smartweed	Polygonaceae	H; Wild	Native	Fodder

245	<i>Persicaria perfoliata</i> (L.) H.Gross	Amile pire lahara	Asiatic tearthumb	Polygonaceae	Cl; Wild	Native	No use
246	<i>Persicaria pubescens</i> (Blume) H.Hara.	Lato pire	Drooping knotweed	Polygonaceae	H; Wild	Native	Used for fish poisoning
247	<i>Phanera vahlii</i> (Wight & Arn.)	Bhorla	Malu creeper	Fabaceae	Cl; Wild	Native	Fodder
248	<i>Phragmites karka</i> (Retz.)	Narkat	Tall reed	Poaceae	H; Wild	Native	Fodder
249	<i>Phyllanthus emblica</i> L.	Amla	Indian gooseberry	Phyllanthaceae	T; Planted	Native	Fruits edible
250	<i>Phyllanthus niruri</i> L.	Bhui amala	Stonebreaker	Phyllanthaceae	H; Wild	Introduced	Medicinal
251	<i>Physalis</i> sp. L.	Rashbhari	Golden berry	Solanaceae	H; Wild	Native	Medicinal
252	<i>Pilea</i> sp. Lindl.	Lede saag	Pilea	Urticaceae	Sh; Wild	Native	Fodder
253	<i>Pinus roxburghii</i> Sarg.	Rani salla	Chir pine	Pinaceae	T; Planted	Native	Timber
254	<i>Piper longum</i> L.	Pipali	Long peeper	Piperaceae	Cl; Wild	Native	Medicinal
255	<i>Plantago</i> sp. L.	Isamagol	Broad-leaved plantain	Plantaginaceae	H; Wild	Native	Medicinal
256	<i>Platostoma coloratum</i> (D.Don) A.J. Paton	Ban babari	Colored jungle Basil	Lamiaceae	Sh; Wild	Native	Medicinal
257	<i>Plumeria alba</i> L.	Galaichi	Pigeon wood	Apocynaceae	T; Planted	Introduced	Ornamental
258	<i>Poa annua</i> L.	-	Annual meadow grass	Poaceae	H; Wild	Native	Fodder
259	<i>Pogonatherum panicum</i> (Lam.) Hack.	-	Baby panda grass	Poaceae	H; Wild	Native	Fodder
260	<i>Pogostemon benghalensis</i> (Burm.f.) Kuntze	Rudhilo	Bengal pogostemon	Lamiaceae	Sh; Wild	Native	Medicinal
261	<i>Polyalthia longifolia</i> (Sonn.) Thwaites	Ashok	False ashoka	Annonaceae	T; Planted	Introduced	Roadside plantation
262	<i>Portulaca oleracea</i> L.	Kulfa saag	duckweed	Portulacaceae	H; Wild	Introduced	Edible
263	<i>Pothos chinensis</i> (Raf.) Merr.	-	-	Araceae	Cl; Wild	Native	No use
264	<i>Pouzolzia zeylanica</i> (L.) Benn. & Br.	Chiple jhar	Pouzolzia's bush	Urticaceae	H; Wild	Native	Fodder
265	<i>Premna barbata</i> Wall. ex Schauer	Gineri	Bearded premna	Lamiaceae	T; Wild	Native	Fodder
266	<i>Prunus cerasoides</i> D.Don	Paiyu	Sour cherry	Rosaceae	T; Planted	Native	Fodder

267	<i>Prunus persica</i> Stokes	Aaru	Peach	Rosaceae	T; Planted	Introduced	Fruits edible
268	<i>Psidium guajava</i> L.	Amba	Common guava	Myrtaceae	T; Planted	Introduced	Fruits edible
269	<i>Pteris dispar</i> Kunze	Unyu	Disparate brake	Pteridaceae	H; Wild	Unspecified	No use
270	<i>Pteris vittata</i> L.	Bish Unyu	Chinese brake	Pteridaceae	H; Wild	Native	No use
271	<i>Pterocarpus marsupium</i> Roxb.	Bijay saal	Malabar kino	Fabaceae	T; Planted	Native	Timber
272	<i>Rauvolfia serpentina</i> (L.) Benth ex. Kurz.	Sarpa Gandha	Indian snakeroot	Apocynaceae	Sh; Planted	Native	Medicinal
273	<i>Reinwardtia indica</i> Dumort.	Pyauli	Yellow flax	Linaceae	H; Wild	Native	Ornamental
274	<i>Rhus chinensis</i> Mill.	Bhakimlo	Nutgall tree	Anacardiaceae	Sh; Wild	Native	Fruits edible and fodder
275	<i>Rosa canina</i> L.	Gulab	Dog rose	Rosaceae	Sh; Ornamental	Unspecified	Ornamental
276	<i>Rosa chinensis</i> Jacq.	Gulab	China rose	Rosaceae	Sh; Ornamental	Introduced	Ornamental
277	<i>Rubus ellipticus</i> Sm.	Ainsetu	Golden Himalayan raspberry	Rosaceae	Sh; Wild	Native	Fruits edible
278	<i>Rubus niveus</i> Thunb.	Kalo ainsetu	Hill raspberry	Rosaceae	Sh; Wild	Native	Fruits edible
279	<i>Rubus parviflorus</i> Nutt.	Rato ainsetu	Thimble berry	Rosaceae	Sh; Wild	Unspecified	Fruits edible
280	<i>Russelia equisetiformis</i> Schlecht. & Cham.	-	Coral plant	Plantaginaceae	H; Ornamental	Introduced	Ornamental
281	<i>Saccharum officinarum</i> L.	Ukhu	Sugarcane	Poaceae	H; Agriculture	Native	Edible
282	<i>Saccharum spontaneum</i> L.	Kans	Wild sugarcane	Poaceae	H; Wild	Native	Fodder
283	<i>Salvia splendens</i> Sellow ex J.A. Schultes	Lwang phul Sage	Sage	Lamiaceae	H; Ornamental	Introduced	Ornamental
284	<i>Sapindus mukorossi</i> Gaertn.	Ritha	Indian soapberry	Sapindaceae	T; Planted	Native	Medicinal
285	<i>Sapium insigne</i> (Royle) Trimen	Khirro	Chinese tallow	Euphorbiaceae	T; Wild	Native	Mulching
286	<i>Schefflera venulosa</i> (Wight & Arn.)	Kursimaal	Schefflera vine	Araliaceae	Cl; Wild	Native	Fodder

287	<i>Schinia wallichii</i> (DC.) Korth.	Chilaume	Needlewood tree	Theaceae	T; Wild	Native	Fuelwood
288	<i>Scleria terrestris</i> (L.) Fassett	-		Cyperaceae	H; Wild	Native	Fodder
289	<i>Seemannia sylvatica</i> (Kunth) Hanst.	-	Hardy gloxinia	Gesneriaceae	H; Ornamental	Introduced	Ornamental
290	<i>Senna occidentalis</i> (L.) Link	Thulo taapre	Coffee senna	Fabaceae	Sh; Wild	Introduced (Invasive)	Medicinal
291	<i>Senna siamea</i> (Lam.) H.S.Irwin & Barneby	Kasood	Kasood	Fabaceae	T; Planted	Introduced	Ornamental
292	<i>Setaria palmifolia</i> (J.Koenig) Stapf	Banspaate kaaguno	Palm grass	Poaceae	H; Wild	Native	Fodder
293	<i>Setaria pumila</i> (Poir.) Roem. & Schult.	Kaagune jhar	Pigeon grass	Poaceae	H; Wild	Native	Fodder
294	<i>Shorea robusta</i> Roth.	Sal	Sal	Dipterocarpaceae	T; Wild	Native	Timber
295	<i>Sida cordifolia</i> L.	Balu	Heart-leaf sida	Malvaceae	H; Wild	Introduced	Medicinal
296	<i>Solanum aculeatissimum</i> Jacq.	Kantakari	Love-apple	Solanaceae	Sh; Wild	Introduced	Medicinal
297	<i>Solanum nigrum</i> L.	Jungali bihi	Black nightshade	Solanaceae	Sh; Wild	Native	Medicinal
298	<i>Solanum torvum</i> Sw.	Bihi	Turkey berry	Solanaceae	Sh; Wild	Introduced	Medicinal
299	<i>Sonchus oleraceus</i> L.	Dudhe kanda	Milk thistle	Asteraceae	H; Wild	Introduced	Medicinal
300	<i>Spermaceoe alata</i> Aubl.	Aalu pate	Button weed	Rubiaceae	H; Wild	Introduced (invasive)	Fodder
301	<i>Spondias pinnata</i> (L.f.) Kurz	Amaro	Wild mango	Anacardiaceae	T; Wild	Native	Fruits edible
302	<i>Strelitzia reginae</i> Banks	Kera phul	Bird of Paradise	Strelitziaceae	H; Ornamental	Introduced	Ornamental
303	<i>Strobanthes sp.</i> Blume	-	-	Acanthaceae	H; Ornamental	Native	Ornamental
304	<i>Swietenia macrophylla</i> King	Mahogany	Mahogany	Meliaceae	T; Planted	Introduced	Timber
305	<i>Synedrella nodiflora</i> (L.) Gaertn.	Hare jhaar	Nodeweed	Asteraceae	H; Wild	Introduced	Fodder
306	<i>Syzygium cumini</i> (L.) Skeels	Jamun	Malabar plum	Myrtaceae	T; Wild	Native	Fruits edible
307	<i>Syzygium nervosum</i> A.Cunn ex. DC	Kyamuno	Rai jamun	Myrtaceae	T; Wild	Native	Fruits edible

308	<i>Tagetes erecta</i> L.	Sayapatri	Mexican marigold	Asteraceae	H; Ornamental	Introduced	Ornamental
309	<i>Tamarindus indica</i> L.	Imli	Tamarind	Fabaceae	T; Planted	Introduced	Fruits edible
310	<i>Taraxacum</i> sp. F.H. Wigg	-	Dandelion	Asteraceae	H; Wild	Native	Fodder
311	<i>Tecoma stans</i> (L.) Juss. ex Kunth	Ghat puspa	Yellow bells	Bignoniaceae	T; Planted	Introduced	Ornamental
312	<i>Tectaria macrodonta</i> (Fee) C.Chr.	Kali niuro	Tectariaceae	Tectariaceae	H; Wild	Native	Edible
313	<i>Tectona grandis</i> L.f.	Teak	Teak	Lamiaceae	T; Planted	Introduced	Timber
314	<i>Terminalia bellirica</i> (Gaertn.) Roxb.	Barro	Bastard myrobalan	Combretaceae	T; Planted	Native	Fodder and medicinal
315	<i>Terminalia chebula</i> Retz.	Harro	Chebulic myrobalan	Combretaceae	T; Planted	Native	Medicinal
316	<i>Thuja compacta</i> Standish ex Gorden	Mayur pankhi	Thuja	Cupressaceae	Sh; Ornamental	Introduced	Ornamental
317	<i>Thysanolaena maxima</i> (Roxb.) Kuntze	Amriso	Broom grass	Poaceae	H; Planted	Native	Broom making
318	<i>Tinospora cordifolia</i> (Thunb.) Miers	Gurjo	Gurjo	Menispermaceae	Cl; Wild	Native	Medicinal
319	<i>Tithonia diversifolia</i> (Hemsl.) A.Gray	Kade putali phul	Tree marigold	Asteraceae	Sh; Ornamental	Introduced	Ornamental
320	<i>Tradescantia pallida</i> (Rose) D.R.Hunt	-	Purple-heart	Commelinaceae	H; Ornamental	Introduced	Ornamental
321	<i>Urena lobata</i> L.	Dale kuro	Caesarweed	Malvaceae	Sh; Wild	Native	Fodder
322	<i>Urtica dioica</i> L.	Sisnoo	Stinging nettle	Urticaceae	Sh; Wild	Native	Medicinal and leaves edible
323	<i>Vallaris solanacea</i> (Roth) Kuntze	Dudhi lahara	Bread flower	Apocynaceae	Cl; Wild	Native	Fodder
324	<i>Vicia faba</i> L.	Bakulaa simi	Broad bean	Fabaceae	H; Agriculture	Introduced	Edible
325	<i>Viola</i> sp. L.	-	Viola	Violaceae	H; Ornamental	Native	Ornamental
326	<i>Washingtonia filifera</i> (Lindl.) H.Wendl.	Fan palm	California fan palm	Areaceae	T; Ornamental	Introduced	Ornamental

327	<i>Woodfordia fruticosa</i> (L.) Kurz	Dhairi	Fire flame bush	Lythraceae	Sh; Wild	Native	Medicinal
328	<i>Zanthoxylum armatum</i> DC.	Timur	Winged prickly ash	Rutaceae	Sh; Planted	Native	Fruits edible
329	<i>Zephyranthes carinata</i> Herb.	Barkhe lily	Pink rain lily	Amaryllidaceae	H; Ornamental	Introduced	Ornamental
330	<i>Zinnia elegans</i> Jacq.	Parbati phul	Common zinnia	Asteraceae	H; Ornamental	Introduced	Ornamental
331	<i>Ziziphus mauritiana</i> Lam.	Bayer	Indian plum	Rhamnaceae	Sh; Wild	Native	Fruits edible

T=Tree, H=Herb, Sh=Shrub, Cl=Climber

Photo plates of flora



1. *Acacia auriculiformis*
©MS Miya



2. *Acacia catechu*
©MS Miya



3. *Aegle marmelos*
©MS Miya



4. *Alangium chinense*
©D Gautam



5. *Albizia chinensis*
©MS Miya



6. *Albizia lebbeck*
©MS Miya



7. *Albizia procera*
©D Gautam



8. *Alnus nepalensis*
©MS Miya



9. *Alstonia scholaris*
©MS Miya



10. *Anthocephalus cadamba*
©MS Miya



11. *Araucaria columnaris*
©MS Miya



12. *Artocarpus heterophyllus*
©MS Miya



13. *Artocarpus lakoocha*
©MS Miya



14. *Azadirachta indica*
©MS Miya



15. *Bauhinia purpurea*
©MS Miya



16. *Bauhinia variegata*
©MS Miya



17. *Bombax ceiba*
©MS Miya



18. *Bridelia retusa*
©D Gautam



19. *Callistemon citrinus*
©MS Miya



20. *Carica papaya*
©D Gautam



21. *Casearia graveolens*
©MS Miya



22. *Cassia fistula*
©MS Miya



23. *Cassia javanica*
©MS Miya



24. *Castanopsis indica*
©MS Miya



25. *Cedrela toona*
©MS Miya



26. *Ceiba pentandra*
©D Gautam



27. *Choerospondias axillaris*
©MS Miya



28. *Cinnamomum camphora*
©MS Miya



29. *Cinnamomum tamala*
©MS Miya



30. *Citrus limon*
©D Gautam



31. *Citrus medica*
©D Gautam



32. *Citrus reticulata*
©MS Miya



33. *Cordia dichotoma*
©J.M. Garg



34. *Cupressus torulosa*
©MS Miya



35. *Cycas revoluta*
©MS Miya



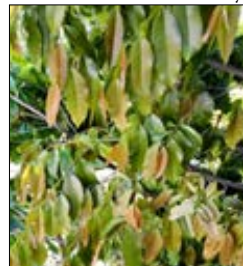
36. *Dalbergia latifolia*
©MS Miya



37. *Dalbergia sissoo*
©MS Miya



38. *Delonix regia*
©D Gautam



39. *Diospyros Montana*
©MS Miya



40. *Diploknema butyracea*
©MS Miya



41. *Elaeocarpus sphaericus*
©MS Miya



42. *Engelhardtia spicata*
©MS Miya



43. *Erythrina stricta*
©MS Miya



44. *Eucalyptus camaldulensis*
©MS Miya



45. *Ficus auriculata*
©D Gautam



46. *Ficus benjamina*
©MS Miya



47. *Ficus benghalensis*
©MS Miya



48. *Ficus carica*
©MS Miya



49. *Ficus clavata*
©MS Miya



50. *Ficus elastica*
©MS Miya



51. *Ficus glaberrima*
©MS Miya



52. *Ficus hispida*
©MS Miya



53. *Ficus lacor*
©MS Miya



54. *Ficus racemosa*
©D Gautam



55. *Ficus religiosa*
©MS Miya



56. *Ficus semicordata*
©MS Miya



57. *Fraxinus floribunda*
©D Gautam



58. *Gmelina arborea*
©D Gautam



59. *Grevillea robusta*
©MS Miya



60. *Grewia sp.*
©MS Miya



61. *Heynea trijuga*
©MS Miya



62. *Holarrhena pubescens*
©MS Miya



63. *Jacaranda mimosifolia*
©MS Miya



64. *Leucaena leucocephala*
©MS Miya



65. *Litchi chinensis*
©MS Miya



66. *Litsea monopetala*
©MS Miya



67. *Machilus sp.*
©MS Miya



68. *Macropanax undulates*
©MS Miya



69. *Mangifera indica*
©MS Miya



70. *Melia azedarach*
©MS Miya



71. *Michelia champaca*
©MS Miya



72. *Moringa oleifera*
©MS Miya



73. *Morus alba*
©MS Miya



74. *Nyctanthes arbor-tristis*
©MS Miya



75. *Oroxylum indicum*
©MS Miya



76. *Pandanus nepalensis*
©MS Miya



77. *Persea Americana*
©MS Miya



78. *Phyllanthus emblica*
©MS Miya



79. *Pinus roxburghii*
©MS Miya



80. *Plumeria alba*
©MS Miya



81. *Polyalthia longifolia*
©MS Miya



82. *Premna barbata*
©D Gautam



83. *Prunus cerasoides*
©MS Miya



84. *Prunus persica*
©MS Miya



85. *Psidium guajava*
©MS Miya



86. *Pterocarpus marsupium*
©MS Miya



87. *Sapindus mukorossi*
©MS Miya



88. *Sapium insigne*
©MS Miya



89. *Schima wallichii*
©MS Miya



90. *Senna siamea*
©MS Miya



91. *Shorea robusta*
©MS Miya



92. *Spondias pinnata*
©D Gautam



93. *Swietenia macrophylla*
©MS Miya



94. *Syzygium cumini*
©MS Miya



95. *Syzygium nervosum*
©MS Miya



96. *Tamarindus indica*
©MS Miya



97. *Tecoma stans*
©MS Miya



98. *Tectona grandis*
©MS Miya



99. *Terminalia belerica*
©MS Miya



100. *Terminalia chebula*
©MS Miya



101. *Washingtonia filifera*
©MS Miya



1. *Acalypha wilkesiana*
©MS Miya



2. *Adhatoda vasica*
©MS Miya



3. *Antidesma acidum*
©MS Miya



4. *Ardisia macrophylla*
©MS Miya



5. *Asparagus racemosus*
©MS Miya



6. *Aucuba japonica*
©D Gautam



7. *Barleria cristata*
©MS Miya



8. *Boehmeria platyphylla*
©MS Miya



9. *Breynia sp.*
©MS Miya



10. *Brugmansia*
©D Gautam



11. *Budjeja asiatica*
©MS Miya



12. *Calotropis gigantea*
©MS Miya



13. *Cannabis sativa*
©MS Miya



14. *Cascabela thevetia*
©D Gautam



15. *Capsicum sp.*
©MS Miya



16. *Cestrum nocturnum*
©MS Miya



17. *Chromolaena odorata*
©MS Miya



18. *Clerodendrum infortunatum*
©MS Miya



19. *Coffea arabica*
©MS Miya



20. *Colebrookea oppositifolia*
©MS Miya



21. *Cordyline fruticosa*
©D Gautam



22. *Datura metel*
©D Gautam



23. *Duranta erecta*
©MS Miya



24. *Euphorbia milii*
©MS Miya



25. *Euphorbia pulcherrima*
©MS Miya



26. *Euphorbia royleana*
©MS Miya



27. *Gossypium arboreum*
©D Gautam



28. *Hibiscus rosa-sinensis*
©MS Miya



29. *Hydrangea sp.*
©MS Miya



30. *Indigofera sp.*
©MS Miya



31. *Inula cappa*
©MS Miya



32. *Ixora sp.*
©D Gautam



33. *Jasminum sambac*
©D Gautam



34. *Jasminum sp.*
©MS Miya



35. *Jatropha curcas*
©MS Miya



36. *Lagerstroemia indica*
©MS Miya



37. *Lantana camara*
©MS Miya



38. *Malvaviscus arboreus*
©MS Miya



39. *Melastoma malabathricum*
©MS Miya



40. *Mimosa rubicaulis*
©MS Miya



41. *Murraya koenigii*
©MS Miya



42. *Mussaenda macrophylla*
©MS Miya



43. *Nerium oleander*
©MS Miya



44. *Osbeckia nepalensis*
©MS Miya



45. *Pilea sp.*
©MS Miya



46. *Perilla frutescens*
©D Gautam



47. *Plantostoma coloratum*
©MS Miya



48. *Pogostemon benghalensis*
©MS Miya



49. *Rauvolfia serpentina*
©MS Miya



50. *Rhus chinensis*
©MS Miya



51. *Rosa canina*
©D Gautam



52. *Rosa chinensis*
©MS Miya



53. *Rubus ellipticus*
©MS Miya



54. *Rubus niveus*
©MS Miya



55. *Rubus parviflorus*
©MS Miya



56. *Senna occidentalis*
©MS Miya



57. *Solanum aculeatissimum*
©D Gautam



58. *Solanum nigrum*
©D Gautam



59. *Solanum torvum*
©D Gautam



60. *Thuja compacta*
©D Gautam



61. *Tithonia diversifolia*
©MS Miya



62. *Urena lobata*
©MS Miya



63. *Urtica dioica*
©MS Miya



64. *Woodfordia fruticosa*
©MS Miya



65. *Zanthoxylum armatum*
©MS Miya



66. *Ziziphus mauritiana*
©MS Miya



1. *Achyranthes aspera*
©MS Miya



2. *Acmella paniculata*
©MS Miya



3. *Adiantum caudatum*
©D Gautam



4. *Adiantum philippense*
©MS Miya



5. *Aeschynanthus parviflorus*
©MS Miya



6. *Agave Americana*
©MS Miya



7. *Ageratina adenophora*
©D Gautam



8. *Ageratum conyzoides*
©MS Miya



9. *Ageratum houstonianum*
©MS Miya



10. *Aglaomorpha quercifolia*
©MS Miya



11. *Aloe vera*
©MS Miya



12. *Alternanthera philoxeroides*
©MS Miya



13. *Alternanthera sessilis*
©MS Miya



14. *Amaranthus caudatus*
©D Gautam



15. *Amaranthus spinosus*
©D Gautam



16. *Amaranthus viridis*
©MS Miya



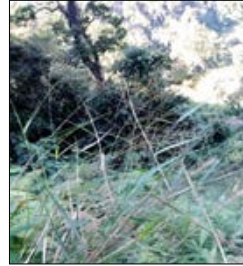
17. *Anisomeles indica*
©MS Miya



18. *Arisaema speciosum*
©D Gautam



19. *Artemisia indica*
©MS Miya



20. *Arundinella nepalensis*
©MS Miya



21. *Asplenium normale*
©MS Miya



22. *Athyrium filix-femina*
©MS Miya



23. *Axonopus compressus*
©D Gautam



24. *Bambusa sp.*
©MS Miya



25. *Bidens pilosa*
©MS Miya



26. *Blechnum corbassonii*
©MS Miya



27. *Bryophyllum pinnatum*
©MS Miya



28. *Caladium bicolor*
©MS Miya



29. *Canna indica*
©D Gautam



30. *Carduus nutans*
©D Gautam



31. *Cassia tora*
©MS Miya



32. *Catharanthus roseus*
©MS Miya



33. *Celosia cristata*
©MS Miya



34. *Centella asiatica*
©MS Miya



35. *Cheilanthes bicolor*
©MS Miya



36. *Cheilocostus speciosus*
©D Gautam



37. *Chenopodium album*
©D Gautam



38. *Chrysanthemum indicum*
©D Gautam



39. *Chrysothemis pulchella*
©D Gautam



40. *Cleome viscosa*
©MS Miya



41. *Coleus* sp.
©MS Miya



42. *Colocasia esculenta*
©MS Miya



43. *Commelina benghalensis*
©D Gautam



44. *Coreopsis grandiflora*
©MS Miya



45. *Cosmos sulphureus*
©D Gautam



46. *Crassocephalum crepidioides*
©MS Miya



47. *Crocoshmia crocosmiiflora*
©D Gautam



48. *Cuphea hyssopifolia*
©MS Miya



49. *Curculigo* sp.
©MS Miya



50. *Curcuma* sp.
©MS Miya



51. *Cyanthillium cinereum*
©D Gautam



52. *Cymbidium* sp.
©MS Miya



53. *Cymbopogon citratus*
©MS Miya



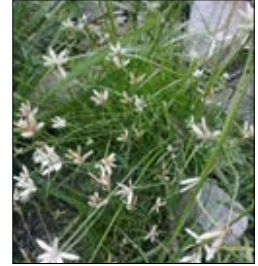
54. *Cynodon dactylon*
©MS Miya



55. *Cynoglossum lanceolatum*
©D Gautam



56. *Cyperus cyperoides*
©MS Miya



57. *Cyperus niveus*
©D Gautam



58. *Cyperus rotundus*
©MS Miya



59. *Dahlia sp.*
©MS Miya



60. *Dendrobium sp.*
©MS Miya



61. *Desmostachya bipinnata*
©MS Miya



62. *Dicranopteris linearis*
©MS Miya



63. *Digitaria sp.*
©MS Miya



64. *Diplazium esculentum*
©MS Miya



65. *Dracaena reflexa*
©D Gautam



66. *Dracaena trifasciata*
©MS Miya



67. *Drepanostachyum intermedium*
©MS Miya



68. *Drymaria cordata*
©MS Miya



69. *Duchesnea indica*
©MS Miya



70. *Eichhornia sp.*
©MS Miya



71. *Elatostema sp.*
©MS Miya



72. *Eleusine indica*
©MS Miya



73. *Emilia sonchifolia*
©MS Miya



74. *Equisetum debile*
©D Gautam



75. *Eriogon canadensis*
©D Gautam



76. *Eryngium foetidum*
©MS Miya



77. *Eulaliopsis binata*
©MS Miya



78. *Euphorbia hirta*
©MS Miya



79. *Fimbristylis falcata*
©D Gautam



80. *Galinsoga quadriradiata*
©MS Miya



81. *Gladiolus dalenii*
©D Gautam



82. *Gomphrena globosa*
©D Gautam



83. *Grona heterocarpa*
©MS Miya



84. *Hedychium coronarium*
©MS Miya



85. *Hemerocallis fulva*
©MS Miya



86. *Hippeastrum sp.*
©MS Miya



87. *Huperzia squarrosa*
©MS Miya



88. *Impatiens balsamina*
©MS Miya



89. *Imperata cylindrica*
©MS Miya



90. *Iris domestica*
©MS Miya



91. *Kyllinga sp.*
©MS Miya



92. *Lepidagathis incurva*
©MS Miya



93. *Lepisorus nudus*
©MS Miya



94. *Mentha spicata*
©MS Miya



95. *Mimosa pudica*
©MS Miya



96. *Mirabilis jalapa*
©MS Miya



97. *Musa paradisiaca*
©MS Miya



98. *Nephrolepis cordifolia*
©MS Miya



99. *Oberonia pachyrachis*
©MS Miya



100. *Ocimum tenuiflorum*
©MS Miya



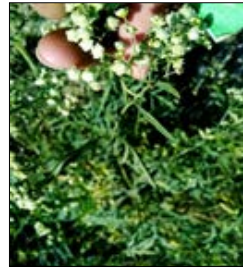
101. *Oplismenus hirtellu*
©MS Miya



102. *Oxalis corniculata*
©MS Miya



103. *Oxalis latifolia*
©MS Miya



104. *Parthenium hysterophorus*
©MS Miya



105. *Paspalum dilatatum*
©D Gautam



106. *Pelargonium sp.*
©MS Miya



107. *Peperomia pellucida*
©MS Miya



108. *Persicaria chinensis*
©MS Miya



109. *Persicaria pubescens*
©MS Miya



110. *Phragmites karka*
©D Gautam



111. *Phyllanthus niruri*
©MS Miya



112. *Physalis sp.*
©MS Miya



113. *Plantago sp.*
©MS Miya



114. *Poa annua*
©D Gautam



115. *Pogonatherum paniceum*
©MS Miya



116. *Portulaca oleracea*
©MS Miya



117. *Pouzolzia zeylanica*
©MS Miya



118. *Pteris dispar*
©MS Miya



119. *Pteris vittata*
©MS Miya



120. *Reinwardtia indica*
©MS Miya



121. *Russelia equisetiformis*
©D Gautam



122. *Saccharum officinarum*
©MS Miya



123. *Saccharum spontaneum*
©MS Miya



124. *Salvia splendens*
©MS Miya



125. *Scleria terrestris*
©MS Miya



126. *Seemannia sylvatica*
©D Gautam



127. *Setaria palmifolia*
©MS Miya



128. *Setaria pumila*
©MS Miya



129. *Sida cordifolia*
©MS Miya



130. *Sonchus oleraceus*
©MS Miya



131. *Spermacoce latifolia*
©MS Miya



132. *Strelitzia reginae*
©MS Miya



133. *Strobilanthes sp.*
©MS Miya



134. *Synedrella nodiflora*
©MS Miya



135. *Tagetes erecta*
©MS Miya



136. *Taraxacum* sp.
©D Gautam



137. *Tectaria macrodonta*
©MS Miya



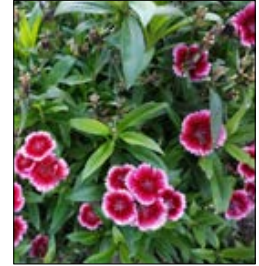
138. *Thysanolaena maxima*
©MS Miya



139. *Tradescantia pallida*
©MS Miya



140. *Vicia faba*
©MS Miya



141. *Viola* sp.
©D Gautam



142. *Zephyranthes carinata*
©MS Miya



143. *Zinnia elegans*
©MS Miya



1. *Argyreia nervosa*
©MS Miya



2. *Bougainvillea spectabilis*
©MS Miya



3. *Campsis radicans*
©MS Miya



4. *Cissampelos pareira*
©MS Miya



5. *Clerodendrum thomsoniae*
©D Gautam



6. *Cyclea* sp.
©D Gautam



7. *Dioscorea bulbifera*
©D Gautam



8. *Dioscorea deltoidea*
©D Gautam



9. *Dioscorea kamoensis*
©MS Miya



10. *Ficus pumila*
©MS Miya



11. *Ipomoea batatas*
©MS Miya



12. *Ipomoea quamoclit*
©MS Miya



13. *Millettia extensa*
©MS Miya



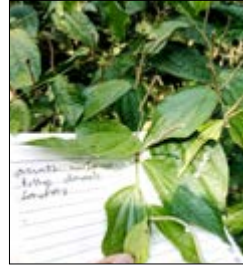
14. *Monstera deliciosa*
©MS Miya



15. *Persicaria perfoliata*
©D Gautam



16. *Phanera vahlii*
©MS Miya



17. *Piper longum*
©MS Miya



18. *Pothos chinensis*
©MS Miya



19. *Schefflera venulosa*
©MS Miya



20. *Tinospora cordifolia*
©MS Miya



21. *Vallaris solanacea*
©MS Miya