

## Vegetation and climate from Late Quaternary Thimi Formation (Phaidhoka Section), Bhaktapur, Nepal

Deepak Banjade, Kabir Sharma, and \*Khum N. Paudyal

Central Department of Geology, Tribhuvan University, Kirtipur, Kathmandu, Nepal

(\*E-mail: khum99@gmail.com)

### ABSTRACT

The Thimi Formation is fluvio-deltaic deposit that constitutes the uppermost part of the sedimentary sequence in the Kathmandu Basin, and is featured by carbonaceous and diatomaceous clay, silty clay, silt, fine to medium grained sand beds, and thin to medium lignite beds. The Phaidhoka Section is located on the way to Nala from Chyamasingh, and is one of the major exposures of the Thimi Formation. Forty four samples were collected from 25 m thick surface exposure for palynological study. The study revealed the dominance of gymnosperm over the angiosperm and herbaceous members. The pollen diagram suggested *Pinus*, *Picea* and *Quercus* as the most dominant trees whereas *Poaceae* is other dominant among the grasses. Three major pollen assemblage zones were marked in the Thimi Formation. Zone P-I indicated warm temperate climate, whereas zone P-II and P-III indicated cold temperate climate. Molluscan operculum in the upper part indicated shallow water condition. The Bovid molars, limb and pelvic bones from the middle part of the section confirm the early findings of molar bones in this area.

**Keywords:** Late Quaternary, palynology, climate, Thimi Formation, Kathmandu Basin

**Paper Received:** 11 July 2015

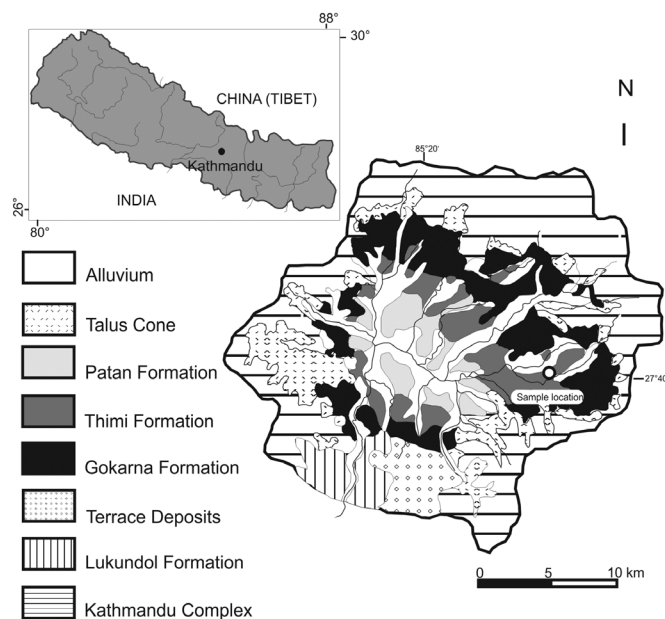
**Paper Accepted:** 12 December 2015

### INTRODUCTION

The Kathmandu Basin is an intermontane basin filled with very thick sequence of lacustrine and fluvial deposits of Plio-Pleistocene age (Yoshida and Igarashi 1984, Moribayashi and Mauro 1980). The oldest formation is known as the Lukundol Formation exposed to the southern part of the basin. The primary basin was mainly confined to the southern part of the valley and was relatively small compared to the later. It started receiving sediments from the southern part and the Lukundol Formation and was formed in the process (Kizaki 1994). But, the uplifting of the Mahabharat Range in the southern part changed the course and the lake started shifting towards north. The tilting of the beds of the Lukundol Formation to the north is one of the major evidence. The new lake was much large and covered large area resulting in the deposition of younger sediments named as the Gokarna, Thimi and Patan formations (Fig. 1). The lake completely drained at the end of the last glacial epoch (Yoshida and Igarashi 1984). The Thimi Formation, a fluvio-lacustrine deposit, is distributed around Pashupatinath, Tribhuvan International Airport, Thimi, Bhaktapur and Patan comprises alternating layers of carbonaceous and diatomaceous clay, silty clay, silt and fine to coarse sand.

Yoshida and Igarashi (1984), Igarashi et al. (1988), and Yoshida and Gautam (1988) divided the basin sediments into the older-stage deposits (i.e. the Lukundol Formation), middle-stage deposits (i.e. the Boregaon, Chapagaon and Pyanggaon terrace deposits), and younger-stage deposits (i.e. the Gokarna, Thimi and Patan formations). A number of palynological investigations were also carried out by many researchers

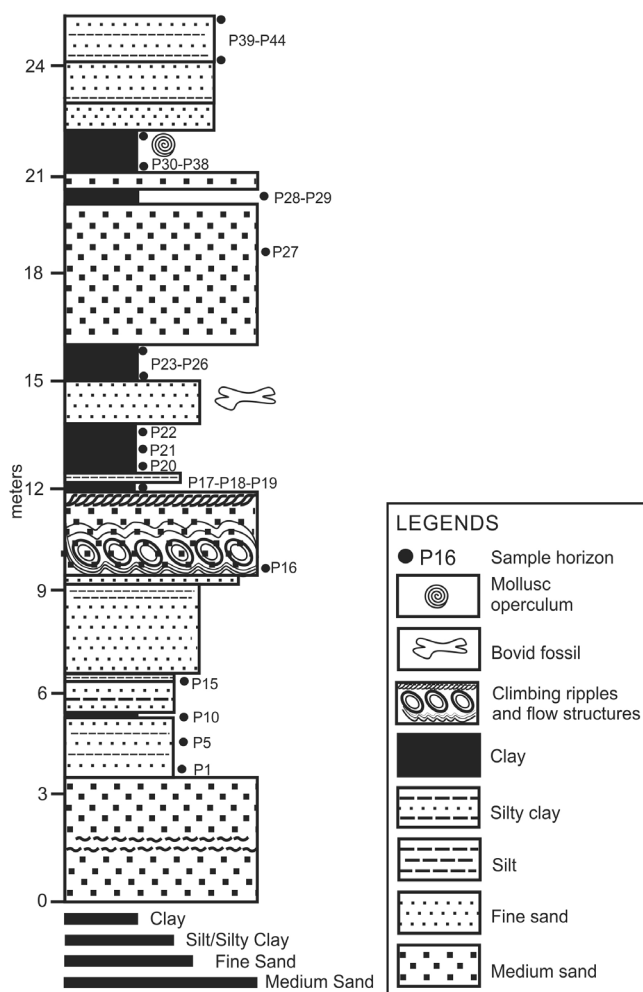
from the different sections of the Kathmandu Basin sediments (Vishnu- Mittre and Sharma 1984, Fuji and Sakai 2001, 2002, Paudyal and Ferguson 2004, Paudyal 2005, Paudyal 2006, Bhandari and Paudyal 2007, Paudyal 2011a, Paudyal 2011b).



**Fig 1: Geological map of the study area showing sampling location (black open circle) at Phaidhoka, Bhaktapur.**

## MATERIALS AND METHODS

Samples were taken from 25 m thick surface exposure at Phaidhoka, Bhaktapur belonging to the Thimi Formation (Fig. 2). The sediments of the Thimi Formation are relatively finer indicating the deposition might have occurred from suspension settling and only limited bedload transport via weak currents. The thin, parallel laminations of alternating silt and silty clay indicate widespread deposition from suspension over the sand beds. The sand and silt layer consists of cross bedded structure; wave ripple laminated structure and sometimes with the distortion of ripples in sand beds. The flow structure and distorted cross beds suggest the liquefaction or fluidisation and hydro-plastic deformation. The deformation was considered to have been caused by paleo-earthquakes during sedimentation (Gajurel et al. 1998).



**Fig. 2: Lithology of the Thimi Formation, Phaidhoka section, Bhaktapur.**

The palynological samples were prepared at the Central Department of Geology, Tribhuvan University, Kirtipur, Kathmandu, following the method described by Zetter (1989) and Ferguson et al. (2007). This includes series of chemical treatment of sediments such as concentrated HCl, HF,

$\text{CH}_3\text{COOH}$ ,  $\text{KClO}_3$ ,  $(\text{CH}_3\text{CO})_2\text{O}$ ,  $\text{H}_2\text{SO}_4$ . The organic content was separated using heavy liquid  $\text{ZnBr}_2$  having specific gravity  $2 \text{ gm/cm}^3$ . The extracted organic material was then preserved in glycerin for microscopy. At least 300 pollen grains from each sample were point-counted under an OLYMPUS BX-43 light microscope. The palynomorphs were identified with the help of various pollen atlases and published literatures. The TILIA software was used for statistical analysis and preparing a pollen diagram.

## RESULTS

### a. Invertebrate fossils

In the upper part of the section a clay layer full of mollusc opercula are discovered. They are identified under family Bithyniidae belonging to the genus *Digonostoma* and *Gabbia*, respectively.

### b. Vertebrate fossils

Six large molars along with fragmented limb and pelvic bones belonging to family Bovidae (possibly *Bos* or *Bubalus*) are recorded from the middle part of the section. The molars and bones are still under investigation to their lower taxonomic level. The vertebrate fossils will be dealt in a separate paper.

### c. Plant microfossils

Significant amount of plant microfossils (palynomorphs) helped us to understand the paleoclimatic evolution of the study area. Out of forty four samples collected from the Phaidhoka Section, twenty two samples were rich in palynomorphs. Altogether 94 species of plants belonging to 74 genera and 40 families were identified (Plates I-IX). The plant microfossils obtained from this section are identified and described below.

#### i. Gymnosperms

##### Family: Pinaceae

##### *Cedrus* sp. (Plate I, Fig. 1)

Shape: Bisaccate; Size:  $70 \mu\text{m}$ , corpus  $50 \mu\text{m}$ , sacchi  $20 \mu\text{m}$ ; corpus perforate; Exine is thick, corpus attached with lower half of the sacchi.

##### *Picea* sp. (Plate I, Fig. 2)

Shape: Bisaccate; Size:  $70 \mu\text{m}$ , corpus  $50 \mu\text{m}$ , sacchi  $20 \mu\text{m}$ ; corpus perforate rugulate, alveolate, attached with majority width of corpus, weak angle between sacchi and corpus.

##### *Pinus roxburghii* (Plate I, Figs. 3-4)

Shape: Bisaccate; Size:  $80 \mu\text{m}$ , corpus  $50 \mu\text{m}$ , sacchi  $35 \mu\text{m}$ ; corpus rugulate, the attachment of corpus and sacchi is featured by distinct angle, sacchi attached with majority width of corpus, polar view shows the attachment of corpus exists at upper half.

##### *Pinus wallichiana* (Plate I, Figs. 5-6)

Shape: Bissacate; Size:  $80 \mu\text{m}$ , corpus  $50 \mu\text{m}$ , sacchi  $30 \mu\text{m}$ ;

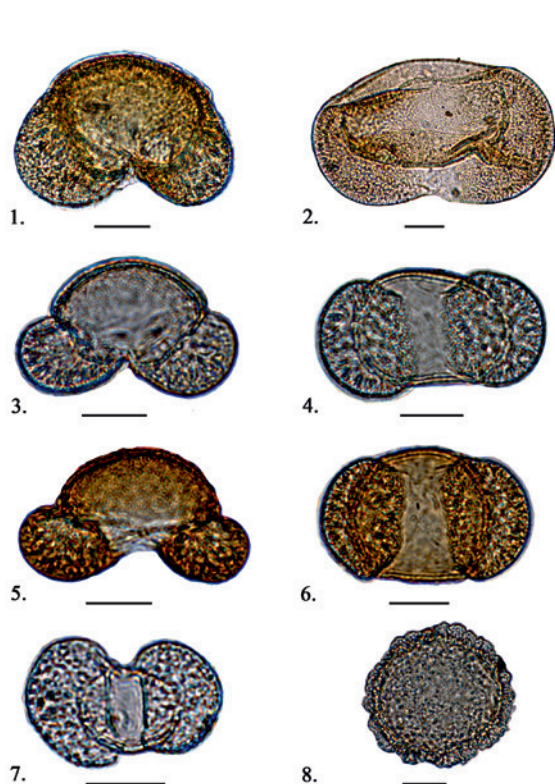


Plate-I: 1- *Cedrus* sp., 2- *Picea* sp., 3 and 4- *Pinus roxburghii* (equatorial and polar view), 5 and 6- *Pinus Wallichiana* (Equatorial and Polar view), 7- *Podocarpus* sp., 8- *Tsuga* sp. (scale bar = 20  $\mu$ m).

corpus is rugulate and rough, sacci finely alveolate, attached with majority width of corpus, polar view shows the attachment of corpus with sacci existing at upper half, corpus making distinct angle with sacci.

*Tsuga* sp. (Plate I, Fig. 8)

Shape: Monosaccate; Size: 70  $\mu$ m, circular in polar view, corpus echinate and foveolate, verrucate to regulate, sacci echinate and foveolate.

**Family: Podocarpaceae**

*Podocarpus* sp. (Plate I, Fig. 7)

Shape: Bisaccate; Size: 50  $\mu$ m, corpus 30  $\mu$ m, saci 20  $\mu$ m; corpus finely verrucate, sacci finely alveolate, attached with majority width of corpus, size of the corpus smaller than sacci.

## ii. Angiosperms (Dicotyledons)

**Family: Acanthaceae**

*Justicia* sp. (1) (Plate II, Fig. 9)

Shape: Prolate; Size: polar axis 20  $\mu$ m, equatorial axis 15  $\mu$ m; Aperture: colporate. Exine: 1.5  $\mu$ m, sexine and nexine having equal thickness, sexine regulate and perforate around aperture.

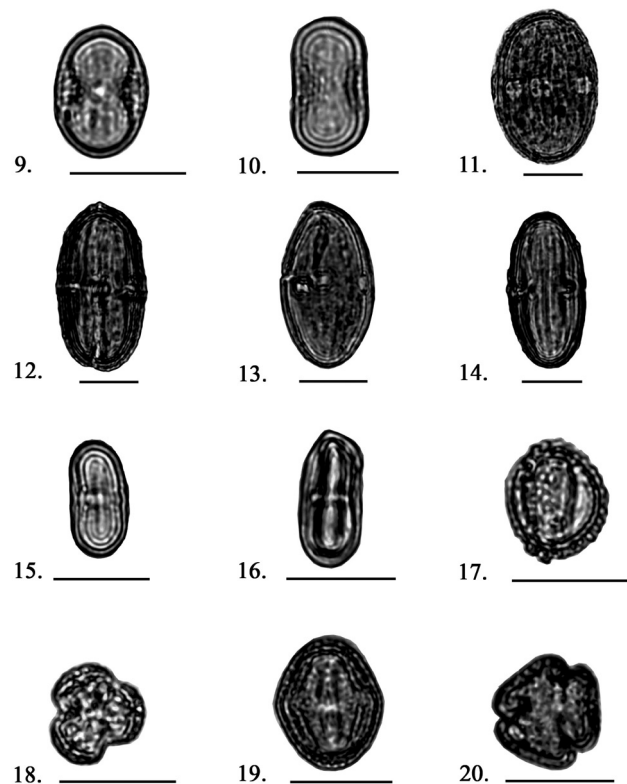


Plate-II: 9. *Justicia* sp. 1, 10. *Justicia* sp. 2, 11. *Strobilanthes* sp. 1, 12. *Strobilanthes* sp. 2, 13. *Strobilanthes* sp. 3, 14. *Strobilanthes* sp. 4, 15. Apiaceae gen. indet.1, 16. Apiaceae gen. indet. 2, 17-18 *Illex* sp., 19-20. Araliaceae gen. indet. (scale bar = 20  $\mu$ m).

*Justicia* sp. (2) (Plate II, Fig. 10)

Shape: Prolate; Size: polar axis 25  $\mu$ m, equatorial axis 15  $\mu$ m; Aperture: Colporate; Exine: 1.6  $\mu$ m, sexine thicker than nexine, nexine alveolate and rough near aperture.

*Strobilanthes* sp. (1) (Plate II, Fig. 11)

Shape: Prolate; Size: Polar axis 60  $\mu$ m, equatorial axis 40  $\mu$ m; Aperture: Tri-colporate; Exine: 5  $\mu$ m, sexine thicker than nexine, sexine coarsely reticulate.

*Strobilanthes* sp. (2) (Plate II, Fig. 12)

Shape: Prolate; Size: Polar axis 60  $\mu$ m, equatorial axis 30  $\mu$ m; Aperture: Tri-colporate, Exine: 5  $\mu$ m, Sexine thicker than nexine, sexine divided into longitudinal strips and coarsely reticulate.

*Strobilanthes* sp. (3) (Plate II, Fig. 13)

Shape: Prolate; Size: Polar axis 50  $\mu$ m, equatorial axis 25  $\mu$ m; Aperture: Tri-colporate; Exine: 3.5  $\mu$ m, sexine and nexine having equal thickness, sexine around aperture regulate and granulate.

*Strobilanthes* sp. (4) (Plate II, Fig. 14)

Shape: Prolate; Size: Polar axis 60  $\mu$ m, equatorial axis 30  $\mu$ m; Aperture: Tri-colporate, Exine: 5  $\mu$ m, sexine thicker than

nexine, sexine further subdivided into longitudinal strips, sexine near aperture foveolate.

**Family: Apiaceae**

*Apiaceae* gen. indet. (1) (Plate II, Fig. 15)

Shape: Prolate; Size: Polar axis 20-23 µm, equatorial axis 10-12 µm; Aperture: Tri-colporate, colpi extended almost upto poles; Exine: 1.3 µm, regulate and granulate.

*Apiaceae* gen. indet. (2) (Plate II, Fig. 16)

Shape: Prolate; Size: Polar axis 25 µm, equatorial axis 15 µm; Aperture: Tri-colporate; Exine: 2.3 µm, nexine thicker than sexine, sexine regulate and granulate.

**Family: Araliaceae**

*Araliaceae* gen indet. (Plate II, Fig. 17-18)

Shape: Spheroidal and sub-prolate; Size: Equatorial view 25 µm, Polar view 20 µm; Aperture: Coloporate; Exine: 4.5 µm, reticulate, regulate and granular.

**Family: Balsaminaceae**

*Impatiens* sp. (Plate III, Fig. 21)

Shape: Oblate, rectangular; Size: Equatorial axis 32 µm; Aperture: Tetra-colporate; Exine: 1.8 µm, thickness of sexine and nexine similar, reticulate and granulate.

**Family: Betulaceae**

*Alnus* sp. (Plate III, Fig. 22)

Shape: Oblate, pentangular in polar view; Size: 18-20 µm; Aperture: Pentaporate, post vestibulum type; Exine: 1.5 µm, sexine thicker than nexine, tectum rugulate and micro-echinate.

*Betula* sp. (Plate III, Fig. 23)

Shape: Oblate, triangular in polar view; Size: 20 µm; Aperture: Tri-porate, circular pores, pores with chamber separates inner and outer walls; Exine 2.4 µm, sexine scrubate to regulate and thick at apex.

*Corylus* sp. (Plate III, Fig. 24)

Shape: Oblate, triangular in polar view; Size: 24 µm; Aperture: Tri-porate; Exine: 3.4 µm, exine has no arci and does not thicken in the aperture region. The sculpture of exine is slightly rugulate. Nexine thickness is not separated from the foot-layer of the aperture region.

**Family: Bombacaceae**

*Bombax* sp. (Plate III, Fig. 25)

Shape: Oblate, triangular in polar view; Size: 35 µm; Aperture: Tri-colporate, situated more or less at mid points; Exine: 3.3 µm, nexine thicker than sexine, clearly stratified, rugulate, alveolate, exine scrubate and reticulated.

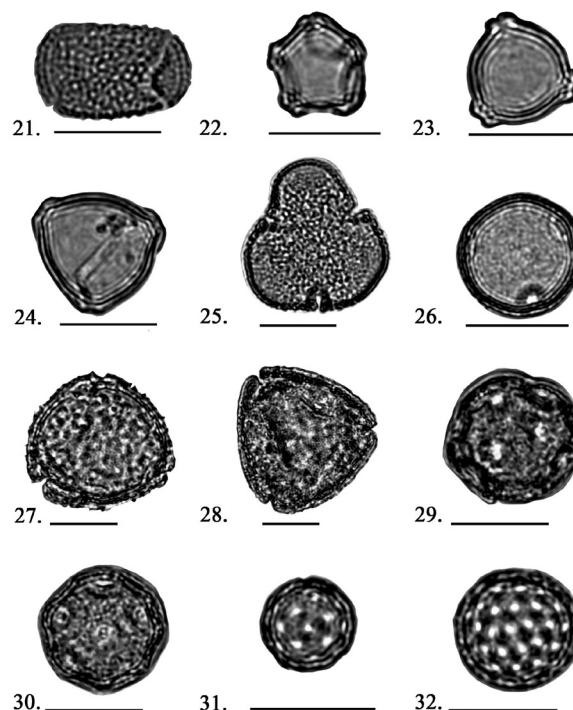


Plate-III: 21. *Impatiens* sp. 22. *Alnus* sp. 23. *Betula* sp. (Family Betulaceae), 24. *Corylus* sp. 25. *Bombax* sp. 26. *Campanulaceae* gen. indet. 27. *Lonicera* sp. (1), 28. *Lonicera* sp. (2), 29. *Caryophyllaceae* gen. indet. (1), 30. *Caryophyllaceae* gen. indet. (2), 31. *Chenopodiaceae* gen. indet. (1), 32. *Chenopodiaceae* gen. indet. (2) (scale bar = 20 µm).

**Family: Campanulaceae**

*Campanulaceae* gen. indet. (Plate III, Fig. 26)

Shape: Prolate, circular in polar view; Size: 25 µm; Aperture: Tri-porate, Exine 3.4 µm, sexine thicker than nexine, rugulate with low relief reticulum.

**Family: Caprifoliaceae**

*Lonicera* sp. (1) (Plate III, Fig. 27)

Shape: More or less spheroidal, oblate; Size: 40-44 µm; Aperture: Tri-colporate, colpi short; Exine: 4 µm, exine scabrous, echinate or micro-echinate, rugulate, foveolate.

*Lonicera* sp. (2) (Plate III, Fig. 28)

Shape: Oblate, triangular in polar view; Size: 45-47 µm; Aperture: Tri-colporate; Exine: 4 µm, sexine is thicker than nexine, rough and foveolate, echinate to microechinate.

**Family: Caryophyllaceae**

*Caryophyllaceae* gen. indet. (1) (Plate III, Fig. 29)

Shape: Spheroidal; Size: 28-30 µm; Aperture: Pantoporate; Exine: 2 µm, thickness between sexine and nexine similar, perforated rugulate and spinulated sexine.

**Caryophyllaceae** gen. indet. (2) (Plate III, Fig. 30)

Shape: Spheroidal or globular; Size: 22-25  $\mu\text{m}$ ; Aperture: Pantoporate; Exine: 4  $\mu\text{m}$ , sexine thicker than nexine, sexine perforated, rugulate, unevenly reticulated.

**Family: Chenopodiaceae**

**Chenopodiaceae** gen. indet. (1) (Plate III, Fig. 31)

Shape: Spheroidal or globular; Size: 12-14  $\mu\text{m}$ ; Aperture: Pantoporate, pore circular; Exine: 2  $\mu\text{m}$ , Sexine thicker than nexine, sexine spinulated, perforate, pore membrane granulate, spinulate.

**Chenopodiaceae** gen. indet. (2) (Plate III, Fig. 32)

Shape: Spheroidal; Size: 25  $\mu\text{m}$ ; Aperture: Pantoporate; Exine: 3  $\mu\text{m}$ , sexine thicker than nexine.

**Family: Compositae**

**Artemisia** sp. (1) (Plate IV, Fig. 33)

Shape: Prolate, lobate, circular in polar view; Size: Polar axis 25-27  $\mu\text{m}$ ; Aperture: Tricolporate; Exine: 3  $\mu\text{m}$ , sexine is thicker than nexine, clearly stratified, sexine in meso-colpium thicker than in the colpi area.

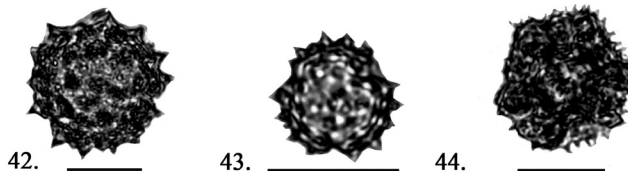
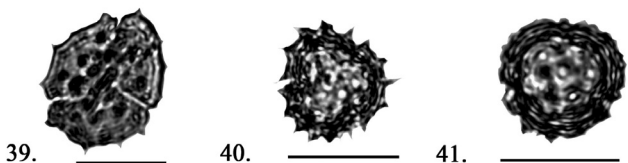
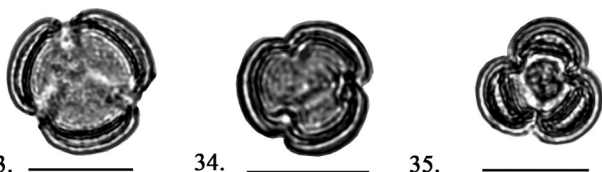


Plate-IV: 33. *Artemisia* sp. (1), 34. *Artemisia* sp. (2), 35. *Artemisia* sp. (3), 36. *Artemisia* sp. (4), 37. *Artemisia* sp. (5), 38. *Artemisia* sp. (6), 39. *Compositae* gen. indet. (1), 40. *Compositae* gen. indet. (2), 41. *Compositae* gen. indet. (3), 42. *Compositae* gen. indet. (4), 43. *Compositae* gen. indet. (5), 44. *Compositae* gen. indet. (6) (scale bar = 20  $\mu\text{m}$ ).

**Artemisia** sp. (2) (Plate IV, Fig. 34)

Shape: Prolate, lobate, circular in polar view; Size: Polar axis 22-25  $\mu\text{m}$ ; Aperture: Tricolporate, colpi as long as polar axis; Exine: 4  $\mu\text{m}$ , sexine thicker than nexine, both distinctly stratified, varying sexine thickness.

**Artemisia** sp. (3) (Plate IV, Fig. 35)

Shape: Prolate, lobate, circular in polar view; Size: 20-22  $\mu\text{m}$ ; Aperture: Tricolporate, reduced colpi; Exine: 3  $\mu\text{m}$ , sexine much thicker than nexine.

**Artemisia** sp. (4) (Plate IV, Fig. 36)

Shape: Prolate, lobate, circular in polar view; Size: 25  $\mu\text{m}$ ; Aperture: Tri-colporate, colpi wide at equator and narrow at poles, distinct with thick margins; Exine: 2  $\mu\text{m}$ , sexine and nexine similar in thickness, micro-echinate and granulated.

**Artemisia** sp. (5) (Plate IV, Fig. 37)

Shape: Prolate, lobate, circular in polar view; Size: 15-17  $\mu\text{m}$ ; Aperture: Tri-colporate, colpi as wide as polar axis; Exine: 1  $\mu\text{m}$ , sexine and nexine clearly stratified, micro-echinate, granulated

**Artemisia** sp. (6) (Plate IV, Fig. 38)

Shape: Prolate, lobate, semi-circular in polar view; Size: 10-12  $\mu\text{m}$ ; Aperture: Tri-colporate, reduced and contracted colpi; Exine: 2  $\mu\text{m}$ , sexine thicker than nexine, distinctly stratified ornamentation.

**Compositae** gen. indet. (1) (Plate IV, Fig. 39)

Shape: Sub-prolate; Size: 32  $\mu\text{m}$ ; Aperture: Tri-colporate; Exine: 6  $\mu\text{m}$ , sexine thicker than nexine, echinate and perforated, surface granulated, spines 2  $\mu\text{m}$  in length.

**Compositae** gen. indet. (2) (Plate IV, Fig. 40)

Shape: Prolate; Size: 20  $\mu\text{m}$ ; Aperture: Tri-colporate; Exine: 4  $\mu\text{m}$ , sexine is thicker than nexine, echinate, perforated, granulated.

**Compositae** gen. indet. (3) (Plate IV, Fig. 41)

Shape: Prolate, circular in polar view; Size: 22-25  $\mu\text{m}$ ; Aperture: Tri-colporate; Exine: 5  $\mu\text{m}$ , exine stratified, exine is thick and coarsely granular, echinate, reduced spines.

**Compositae** gen. indet. (4) (Plate IV, Fig. 42)

Shape: Prolate, circular in polar view; Size: 40  $\mu\text{m}$ ; Aperture: Tri-colporate; Exine: 2  $\mu\text{m}$ , sexine thicker, echinate, coarsely granular, spines 2  $\mu\text{m}$  in length.

**Compositae** gen. indet. (5) (Plate IV, Fig. 43)

Shape: Prolate, circular in polar view; Size: 16  $\mu\text{m}$ ; Aperture: Tricolporate, colpus covered with granular elements, narrow, smooth and sunken colpi; Exine: 4  $\mu\text{m}$ , roughly granulated, echinate, thicker sexine.

**Compositae** gen. indet. (6) (Plate IV, Fig. 44)

Shape: Sub-prolate, hexagonal in polar view; Size: 33-35  $\mu\text{m}$ ;  
Aperture: Tri-colporate.

**Family: Dipsacaceae**

*Dipsacus* sp. (1) (Plate V, Fig. 45)

Shape: Semi-oblate, spheroidal; Size: 65  $\mu\text{m}$ ; Aperture: Tri-colporate; Exine: 6  $\mu\text{m}$ , very thicker sexine which is stratified into two layers, sexine echinate and microechinate, perforated and granulated, varying spine size, larger spines are stupa-shaped.

*Dipsacus* sp. (2) (Plate V, Fig. 46)

Shape: Oblate, spheroidal; Size: 55-60  $\mu\text{m}$ ; Aperture: Tri-colporate; Exine: 7  $\mu\text{m}$ , sexine is thicker, extended and divided, granulated, sexine stratified into two layers, echinate and microechinate.

**Family: Elaeagnaceae**

*Elaeagnus* sp. (Plate V, Fig. 47)



Plate-V: 45. *Dipsacus* sp. (1), 46. *Dipsacus* sp. (2), 47. *Elaeagnus* sp., 48. *Rhododendron* sp. (1), 49. *Rhododendron* sp. (2), 50. *Rhododendron* sp. (3), 51. *Rhododendron* sp. (4), 52. Ericaceae gen. indet. (1), 53. Ericaceae gen. indet. (2), 54. Euphorbiaceae gen. indet. (1), 55-56. Euphorbiaceae gen. Indet. (2), Equatorial and Polar View (scale bar = 20  $\mu\text{m}$ ).

Shape: Oblate, triangular in polar view; Size: 25-27  $\mu\text{m}$ ;  
Aperture: Tri-colporate; Exine: 4  $\mu\text{m}$ , sexine thinner than nexine, surface granulate and slightly undulating.

**Family: Ericaceae**

*Rhododendron* sp. (1) (Plate V, Fig 48)

Shape: Tetrahedral tetrad; Size: 40  $\mu\text{m}$ ; Aperture: Tri-colporate; Exine: 3  $\mu\text{m}$ , sexine and nexine similar in thickness, probably psilate.

*Rhododendron* sp. (2) (Plate V, Fig. 49)

Shape: Tetrahedral tetrad; Size: 38  $\mu\text{m}$ ; Aperture: Tri-colporate; Exine 5  $\mu\text{m}$ , sexine thicker than nexine.

*Rhododendron* sp. (3) (Plate V, Fig. 50)

Shape: Tetrahedral tetrad; Size: 40  $\mu\text{m}$ ; Aperture: Tri-colporate; Exine: 5  $\mu\text{m}$ , sexine thicker than nexine.

*Rhododendron* sp. (4) (Plate V, Fig. 51)

Shape: Tetrahedral tetrad; Size: 35-38  $\mu\text{m}$ ; Aperture: Tri-colporate; Exine: 6  $\mu\text{m}$ , thickness of exine not similar, undulating, sexine thicker than nexine.

**Ericaceae** gen. indet. (1) (Plate V, Fig. 52)

Shape: Tetrahedral tetrads; Size: 25-28  $\mu\text{m}$ ; Aperture: Tri-colporate; Exine: 3.5  $\mu\text{m}$ , sexine and nexine similar in thickness.

**Ericaceae** gen. indet. (2) (Plate V, Fig. 53)

Shape: Tetrahedral tetrad; Size: 20-22  $\mu\text{m}$ ; Aperture: Tricolporate; Exine: 3.5  $\mu\text{m}$ ; sexine much thicker than nexine.

**Family: Euphorbiaceae**

**Euphorbiaceae** gen. indet. (1) (Plate V, Fig. 54)

Shape: Prolate, semicircular in polar view; Size: 17  $\mu\text{m}$ ; Exine: 3  $\mu\text{m}$ , narrow, long colpus, marginal zone of colpus smooth, exine structure reticulate-rugulose.

**Euphorbiaceae** gen. indet. (2) (Plate V, Fig. 55-56)

Shape: Semi-circular in equatorial view, circular in polar view; Size: Equatorial axis 3  $\mu\text{m}$ , Polar axis 32  $\mu\text{m}$ ; Exine: 6.5  $\mu\text{m}$ , reticulated exine, sexine thicker than nexine, long narrow colpus.

**Family: Fagaceae**

*Castanopsis* sp. (Plate VI, Fig. 57)

Shape: Prolate and circular in equatorial view; Size: 14  $\mu\text{m}$ ; Aperture: Tri-colporate, colpi long and narrow; Exine: 2  $\mu\text{m}$ , sexine and nexine similar in thickness, radially symmetrical, sculpture tangled-stringy-rugulose.

*Quercus* sp. (Plate VI, Fig. 58-59)

Shape: Prolate in equatorial view and lobate in polar view;

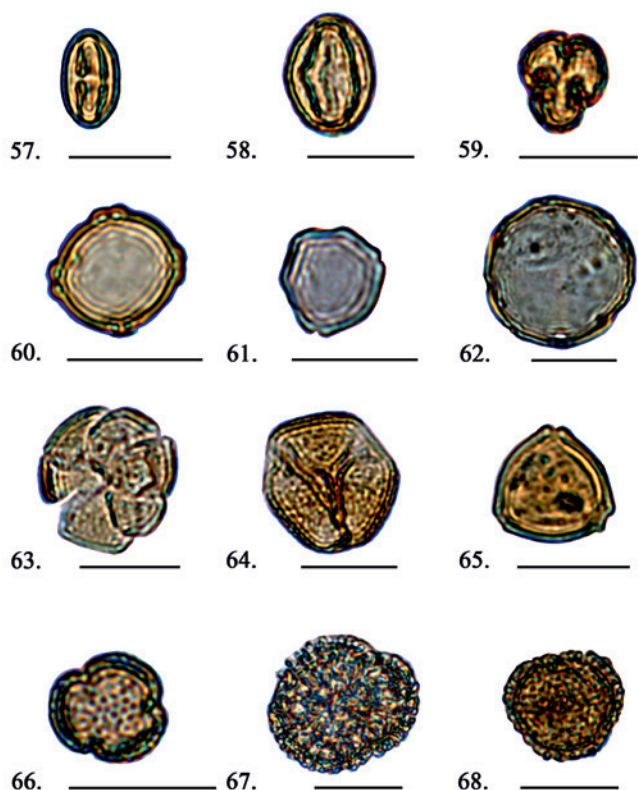


Plate-VI: 57. *Castanopsis* sp. (Family Fagaceae), 58-59. *Quercus* sp., Equatorial and Polar view, 60. *Myriophyllum* sp., 61. *Engelhardtia* sp. (Family Juglandaceae), 62. *Juglans* sp., 63. Family Labiatae gen. indet., 64. *Nymphoides* sp. 65. *Myrica* sp. 66. *Fraxinus* sp., 67. *Jasminum* sp., 68. *Ligustrum* sp. (scale bar = 20  $\mu$ m).

Size: Equatorial axis 18  $\mu$ m, polar axis 15  $\mu$ m; Aperture: Tri-colporate, long narrow colpi; Exine: mesocolpium 2  $\mu$ m relatively short, straight furrows, occasionally bent in the pore areas, surface verrucate to scabrate with elements of various sizes.

#### Family: Haloragaceae

*Myriophyllum* sp. (Plate VI, Fig. 60)

Shape: Oblate, semi-circular in equatorial view; Size: Equatorial axis 20  $\mu$ m; Aperture: Pentaporate; Sexine slightly thicker than nexine, granulated.

#### Family: Juglandaceae

*Engelhardtia* sp. (Plate VI, Fig. 61)

Shape: Oblate, triangular in outline; Size: 16  $\mu$ m; Aperture: Tri-porate; Exine: 3  $\mu$ m, sexine thicker than nexine, granulated.

*Juglans* sp. (Plate VI, Fig. 62)

Shape: Oblate, spheroidal to sub-spheroidal, circular; Size: 38  $\mu$ m; Aperture: Pantoporate; Exine: 2.5  $\mu$ m, sexine thicker than nexine, tectum microechinate.

#### Family: Labiatae

Labiatae gen. indet. (Plate VI, Fig. 63)

Shape: Oblate to sub-spheroidal; Size: 28  $\mu$ m; Aperture: Hexacolporate; Exine: 3  $\mu$ m, sexine slightly thicker than nexine, smoothly reticulated, furrows are generally straight and narrow.

#### Family: Menispermaceae

*Nymphoides* sp. (Plate VI, Fig. 64)

Shape: Triangular in polar view; Size: 28-30  $\mu$ m; Aperture: Tri-colporate; Exine: 4  $\mu$ m, sexine much thicker than nexine, granulated, alveolate.

#### Family: Myricaceae

*Myrica* sp. (Plate VI, Fig. 65)

Shape: Oblate, triangular in polar view; Size: 18-20  $\mu$ m; Aperture: Tri-colporate; Exine: 1  $\mu$ m, sexine is thicker than nexine near and around pori, sexine microechinate.

#### Family: Oleaceae

*Fraxinus* sp. (Plate VI, Fig. 66)

Shape: Prolate, circular in polar view; Size: 15  $\mu$ m; Aperture: Tri-colporate, colpi as long as polar axis; Exine: 1.5  $\mu$ m, sexine thicker than nexine, granulated, alveolated.

*Jasminum* sp. (Plate VI, Fig. 67)

Shape: Spheroidal, circular in polar view; Size: 38  $\mu$ m; Aperture: Tri-colporate; Exine: 3  $\mu$ m, sexine thicker than nexine, surface of the exine is reticulated.

*Ligustrum* sp. (Plate VI, Fig. 68)

Shape: Spheroidal to sub-prolate, circular in polar view; Size: 22  $\mu$ m; Aperture: Tri-colporate; Exine: 2.5  $\mu$ m, sexine thicker than nexine, exine reticulated, foveolated.

#### Family: Onagraceae

Onagraceae gen. indet. (Plate VII, Fig. 69)

Shape: Tetrahedral tetrads; Size: 55-60  $\mu$ m; Aperture: Tricolporate; Exine: 5  $\mu$ m, sexine comparatively thicker than nexine, aspidated, exine distinctly stratified, reticulated.

#### Family: Polygonaceae

*Polygonum posumbo* (Plate VII, Fig. 70)

Shape: Globular; Size: 10-15  $\mu$ m; Aperture: Pantoporate; Exine: 1.5  $\mu$ m, sexine thicker than nexine, exine stratified and reticulated.

*Polygonum* sp. (1) (Plate VII, Fig. 71)

Shape: Spheroidal; Size: 30-32  $\mu$ m; Aperture: Pantoporate; Exine: 4  $\mu$ m, sexine and nexine similar in size, reticulated, alveolated, columella long and closely packed, lumina with numerous rudimentary columellae.

*Polygonum* sp. (2) (Plate VII, Fig. 72)

Shape: Spheroidal; Size: 35  $\mu$ m; Aperture: Pantoporate; Exine: 5  $\mu$ m, sexine thicker than nexine, granulated, reticulated, micro

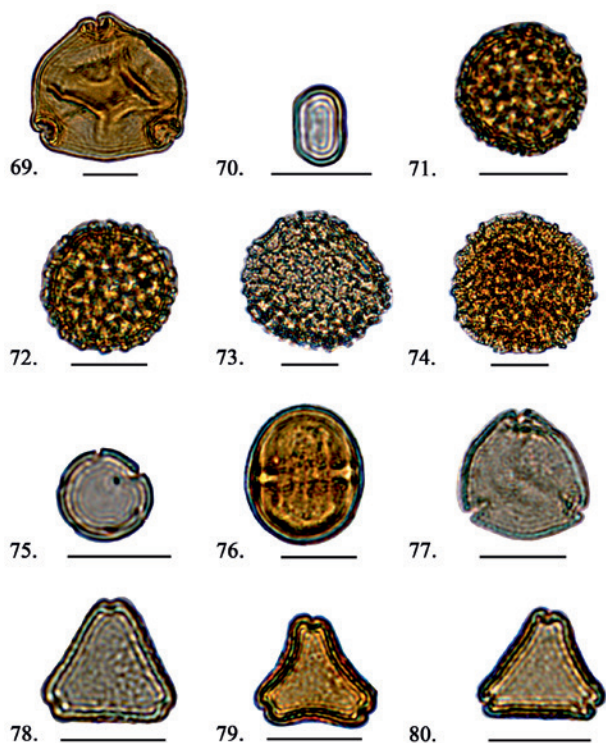


Plate-VII: 69. Family Onagraceae gen. Indet., 70. *Polygonum posumbu*, 71. *Polygonum* sp. (1), 72. *Polygonum* sp. (2), 73. *Polygonum* sp. (3), 74. *Polygonum* sp. (4), 75. Family Rubiaceae gen. indet., 76. Family Sapotaceae gen. indet., 77. *Symplocos* sp. (1), 78. *Symplocos* sp. (2), 79. *Symplocos* sp. (3), 80. *Symplocos* sp. (4) (scale bar = 20  $\mu$ m).

spinules are seen on the edge, laminated.

***Polygonum* sp. (3) (Plate VII, Fig. 73)**

Shape: Spheroidal; Size: 55-58  $\mu$ m; Aperture: Pantoporate; Exine: 4  $\mu$ m, sexine much thicker than nexine, reticulated, micro spinules, alveolated, columell along and closely packed.

***Polygonum* sp. (4) (Plate VII, Fig. 74)**

Shape: Spheroidal; Size: 57-60  $\mu$ m; Aperture: Pantoporate; Exine: 5  $\mu$ m, sexine thicker than nexine, granulated, reticulated, micro spinules are seen on the edge, laminated.

**Family: Rubiaceae**

**Rubiaceae gen. indet. (Plate VII, Fig. 75)**

Shape: Spheroidal, circular in polar view; Size: 15-17  $\mu$ m; Aperture: Pentaporate; Exine: 3  $\mu$ m, sexine thicker than nexine, reticulated, perforated.

**Family: Sapotaceae**

**Sapotaceae gen. indet. (Plate VII, Fig. 76)**

Shape: Prolate, circular in polar view; Size: 28-39  $\mu$ m; Aperture: Tetra-colporate; Exine: 4  $\mu$ m, sexine thicker than nexine, perforated, alveolated.

**Family: Symplocaceae**

***Symplocos* sp. (1) (Plate VII, Fig. 77)**

Shape: Triangular in polar view; Size: 30-32  $\mu$ m; Aperture: Tri-colporate; Exine: 3  $\mu$ m, sexine much thicker than nexine, roughly verrucate exine surface.

***Symplocos* sp. (2) (Plate VII, Fig. 78)**

Shape: Triangular in polar view; Size: 20-22  $\mu$ m; Aperture: Tri-colporate; Exine: 2  $\mu$ m, sexine thicker than nexine, exine stratified, reticulated.

***Symplocos* sp. (3) (Plate VII, Fig. 79)**

Shape: Triangular in polar view; Size: 22-25  $\mu$ m; Aperture: Tricolporate; Exine: 4  $\mu$ m, sexine and nexine similar in thickness, exine surface smoothly verrucated, reticulated.

***Symplocos* sp. (4) (Plate VII, Fig. 80)**

Shape: Triangular in polar view; Size: 25-28  $\mu$ m; Aperture: Tri-colporate; Exine: 3  $\mu$ m, sexine slightly thicker than nexine, exine stratified.

**Family: Ulmaceae**

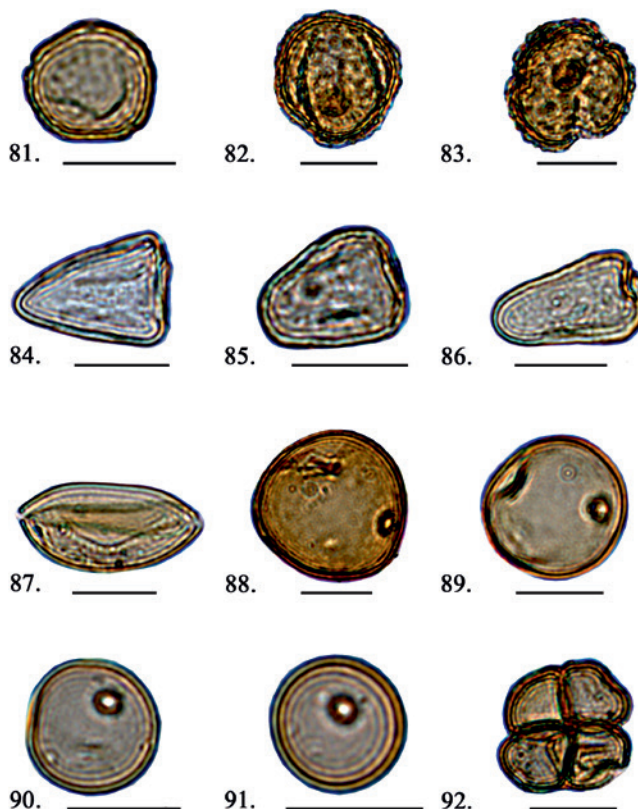


Plate-VIII: 81. *Ulmus* sp. 82-83. Family Valerianaceae gen. indet. (Equatorial and Polar View) 84. Cyperaceae gen. indet. (1), 85. Cyperaceae gen. Indet. (2), 86. Cyperaceae gen. Indet. (3), 87. Liliaceae gen. indet., 88-91. Poaceae gen. Indet., 92. *Typha* sp. (scale bar = 20  $\mu$ m).



*Ulmus* sp. (Plate VIII, Fig. 81)

Shape: Oblate, pentagonal in polar view; Size: 22 µm; Aperture: Pentaporate; Exine: 1.5 µm, thicker sexine and regulated, walls are fragile and pores are typically less aspidate.

**Family: Valerianaceae**

**Valerianaceae** gen. indet. (Plate VIII, Figs. 82, 83)

Shape: Spherical in equatorial view, circular in polar view; Size: Equatorial axis 34 µm, Polar axis: 30 µm; Aperture: Tricolporate; Exine: 5 µm, exine slightly thicker, columellae in mesocolpia simple, sparser, irregular in shape, branched above, ornamentation micro-echinate, verrucae absent.

**iii. Angiosperms (Monocotyledons)**

**Family: Cyperaceae**

**Cyperaceae** gen. indet. (1) (Plate VIII, Fig. 84)

Shape: Triangular; Size: 36 µm; Aperture: Monoporate; Exine 2.5 µm, sexine slightly thicker than nexine, smoothly covered exine, granulated, micro-echinate.

**Cyperaceae** gen. indet. (2) (Plate VIII Fig. 85)

Shape: Triangular; Size: 25 µm; Aperture: Monoporate; Exine: 2.8µm, Sexine much thicker than nexine, perforated, micro-echinate.

**Cyperaceae** gen. indet. (3) (Plate VIII, Fig. 86)

Shape: Triangular; Size: 30-35 µm; Aperture: Monoporate; Exine: 2.7 µm, sexine slightly thicker than nexine, perforated, reticulated.

**Family: Liliaceae**

**Liliaceae** gen. indet. (Plate VIII, Fig. 87)

Shape: Oblate, elliptic; Size: 40-44 µm; Aperture: Monosulcate; Exine: scabrated, reticulum irregular, very small lumina present.

**Family: Poaceae**

**Poaceae** gen. indet. (1) (Plate VIII, Fig. 88)

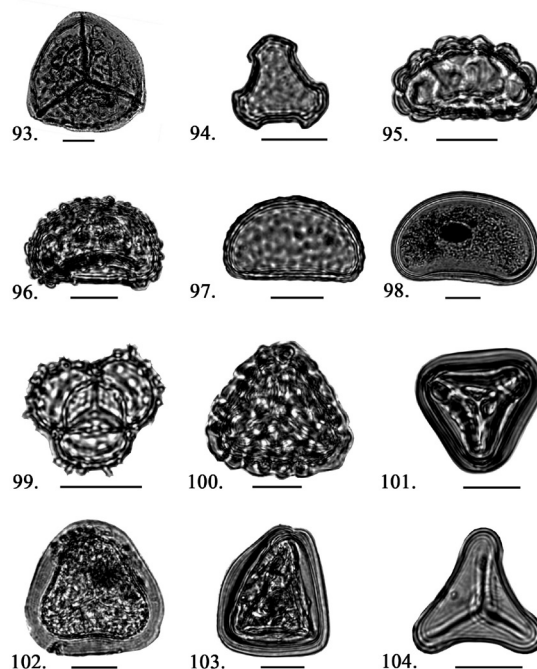
Shape: Spherical; Size: 40 µm; Aperture: Monoporate; Exine: 2 µm, sexine and nexine similar in thickness, micro-echinate, perforated.

**Poaceae** gen. indet. (2) (Plate VIII, Fig. 89)

Shape: Spherical; Size: 32-34 µm; Aperture: Monoporate; Exine: 1.5 µm, sexine and nexine similar in thickness, micro-echinate, perforated.

**Poaceae** gen. indet. (3) (Plate VIII, Fig. 90)

Shape: Spherical; Size: 25 µm; Aperture: Monoporate; Exine: 2 µm, stratified and smooth, both sexine and nexine similar.



**Plate-IX:** 93. *Lycopodium* sp. (1), 94. *Lycopodium* sp. (2) 95. *Arthromeris* sp. 96. *Polypodium* sp. 97. *Davallia* sp. 98. *Polypodium* sp. 99. *Selaginella* sp. 100. *Pteris* sp. (1) 101. *Pteris* sp. (2), 102. *Pteris* sp. (3), 103. *Pteris* sp. (4), 104. *Cyathea* sp. (scale bar = 20 µm).

**iv. Pteridophytes**

**Family: Lycopodiaceae**

*Lycopodium* sp. (1) (Plate IX, Fig. 93)

Shape: Semi-circular in polar view; Size: 75-80 µm; Aperture: Trilete.

*Lycopodium* sp. (2) (Plate IX, Fig. 94)

Shape: Triangular; Size: 25-30 µm; Aperture: Trilete.

**Family: Polypodiaceae**

*Arthromeris* sp. (Plate IX, Fig. 95)

Shape: Bilateral in polar view and kidney shaped in equatorial view; Size: 45 µm; Aperture: Monolete; Exospore: 5 µm, spinose and granulose, thickly undulated.

*Polypodium* sp. (Plate IX, Fig. 96)

Shape: Bilateral; Size: 90 µm; Aperture: Monolete; Exospore: 5 µm, spinose, roughly granulate.

**Family: Selaginellaceae**

*Selaginella* sp. (Plate IX, Fig. 99)

Shape: Circular, lobate; Size: 30-32 µm. Aperture: Trilete; Exospore: 3 µm, roughly echinate, slightly rugulated.

**Family: Pteridaceae**

*Pteris* sp. (1) (Plate IX, Fig. 100)

Shape: Triangular in polar view, straight to concave side and rounded corners; Size: 45-50 µm; Aperture: Trilete; Exospore is proximally verrucate and distally regulate.

*Pteris* sp. (2) (Plate IX, Fig. 101)

Shape: Triangular in polar view; Size: 40-45 µm; Aperture: Trilete; Verrucated exospores and distally regulate.

*Pteris* sp. (3) (Plate IX, Fig. 102)

Shape: Circular, Triangular in polar view; Size: 50-55 µm; Aperture: Trilete; Exospore with rounded corners, 5 µm, roughly granulose.

*Pteris* sp. (4) (Plate IX, Fig. 103)

Shape: Triangular in polar view; Size: 40-42 µm; Aperture: Trilete; Exospore slightly thicker than endospore, distally regulated and proximally verrucate.

**Family: Cyatheaceae**

*Cyathea* sp. (Plate IX, Fig. 104)

Shape: Triangular, concave sides and rounded corners; Size: 35 µm; Aperture: Trilete. The exposure is 1.2-3 µm thick, psilate, perforate or verrucatae.

**POLLEN ASSEMBLAGE ZONES**

The pollen diagram prepared on the basis of palynomorphs shows three pollen assemblage zones; i.e. P-I, P-II and P-III in ascending order (Fig. 3).

**Zone P - I**

The ZONE P-I is the lowermost zone of this section and is featured by the dominance of *Pinus* (12.3-32.12%) followed by *Picea* (0.3-1.08%), *Tsuga* (0.43-1.71%) and very few

*Podocarpus*. Similarly, angiosperm trees like and *Quercus* (8.59-22.46%) have the dominance in their group. Herbs like Poaceae (8.03-26.04%) are high and *Artemisia*, Compositae and Caryophyllaceae are smaller in percentages. Pteridophytes are represented by Polypodiaceae (1.56-23.91%), Triletes (1.28-8.85%) and other Monoletes (1.2-4.81%). Wetland plants are represented by Polygonaceae, Cyperaceae and Liliaceae.

**Zone P-II**

This zone shows the significant decrease of pollen compared to previous zone. Gymnosperm such as *Pinus* (19.46-24.88%) has declined, whereas *Picea* (4-5.88%) and *Podocarpus* (0.67-2%) have retained their presence in similar way. The most distinguishing feature of this zone is the presence of *Cedrus*, which is completely absent in other zones. *Quercus* and Poaceae which were dominant in Zone P-I has declined in significant number. Angiosperms like *Alnus* and *Betula* shows weak presence whereas species like *Castanopsis*, *Juglan*, *Myrica*, *Fraxinus* are almost absent. *Artemisia* is most common among herbs. The wetland plants belonging to families Cyperaceae, Polygonaceae, and Liliaceae are dominant as in the previous pollen assemblage zone. Among Pteridophytes, Polypodiaceae (2.26-11.16%) and other Triletes (4.03-6%) are common.

**Zone P-III**

The Zone P-III is witnessed by the heavy increase of *Quercus* (12.14-24.06%). Similarly the percentage of gymnosperms such as *Picea* (3.26-10.5%), *Pinus* and *Tsuga* (3.27-7.34%) increased. *Alnus* and *Betula* also show their significant presence in this zone. *Artemisia* and other Compositae are evident. The percentage of Poaceae is fluctuating between 5-10% of the total pollen sum. Among the wetland plants *Polygonum* and Cyperaceae are still prominent while Liliaceae decreased. In Pteridophytes Polypodiaceae is dominant (3.84-21.79%) which is followed by Pteridaceae (0.75-3.98%) and other Triletes (0.66-14.68%). The percentage of Polypodiaceae has gradually increased towards the top.

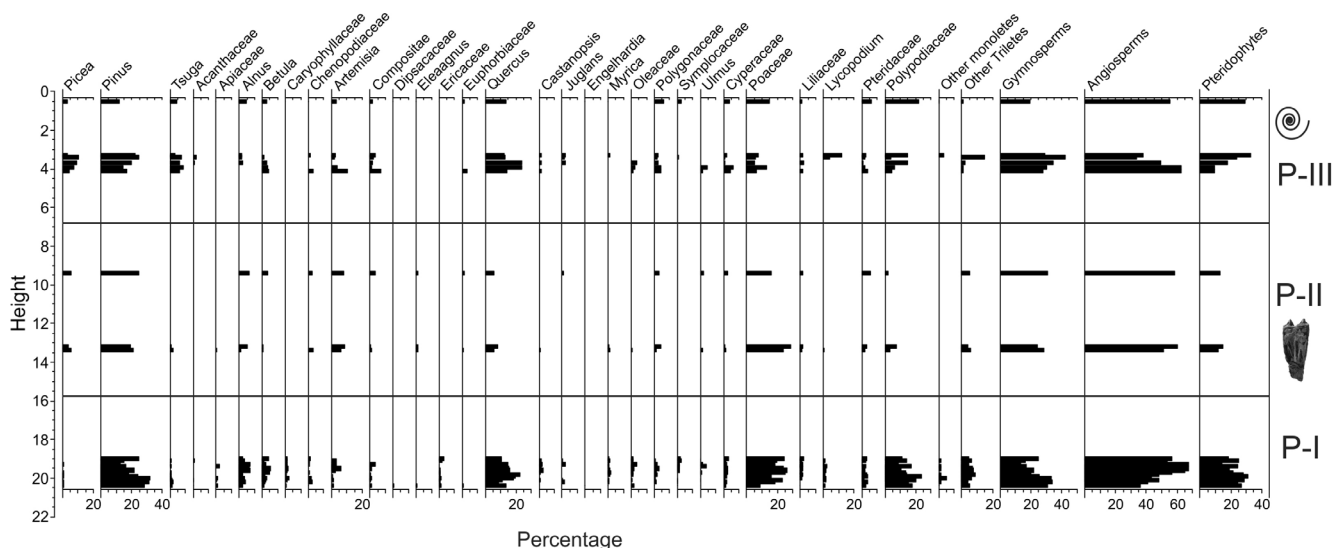


Fig. 3: Pollen diagram of the Thimi Formation, Phaidhoka section, Bhaktapur.

## PALEOCLIMATE

The pollen analysis from the Phaidhoka Section of the Thimi Formation reveals three major pollen zones i.e. P-I, P-II and P-III. Every pollen assemblages were compared to present vegetation of central Nepal assuming that living plants had similar requirement of climate conditions compared to those of modern ones. Different plants carry their peculiar climatic signatures. Gymnosperms like *Pinus* represents sub-tropical to cool temperate climate whereas *Picea* represents cold and dry climate. Similarly, *Tsuga* represents moist cool temperate areas with high rainfall, cool summers and little or no water stress while major angiosperms such as *Quercus* represents sub-tropical to cold temperate climate. Similarly *Alnus* and *Betula* are found in temperate zones. *Artemisia* grows in temperate climates of both hemispheres, usually in dry or semiarid habitats. Compositae is most common in the arid and semiarid regions of subtropical and lowers temperate latitudes. Polypodiaceae and Pteridaceae are found in wet climates, most commonly in wet forest floor, representing humid climate. Polygonaceae, Cyperaceae, Typhaceae and Haloragaceae grow near water resources along the bank of river, pond and lakes.

In the pollen assemblage P-I, the dominant species among gymnosperm was *Pinus*, Other gymnosperms like *Picea* and *Tsuga* are present in minor numbers. The angiosperm tree *Quercus* is most dominant throughout the zone following by *Betula* indicating cold climate. *Alnus* indicate the wet condition in riverine and shadow areas. Grass pollen belonging to Poaceae are also dominant indication much dry condition. Pteridophytes fern like Polypodiaceae are found in wet regions. So the vegetation pattern of this assemblages if not uniform, but the majority of vegetation indicates the assemblage as warm temperate climate.

The pollen assemblage P-II marks as the significant decrease of pollen counts. Presence of frequent sandy layers made palynological sampling difficult in this part of the lithological section. Clastic nature of sediments may be responsible for yielding less pollen concentration. *Picea* has increased compared to previous pollen assemblage zone whereas *Pinus*, *Alnus*, *Betula*, *Quercus*, Poaceae and Polypodiaceae are thinly distributed. From the vegetation pattern, the climate can be concluded as colder than the previous pollen assemblage zone.

The pollen assemblage P-III marks the increment of *Pinus* which is dominant among Gymnosperms. *Picea* and *Tsuga* are dominant indicating much colder than zone P-II. Angiosperm tree *Quercus* and *Juglans* have increased indicating much colder in the upper part of this section. The gap in palynological record is evident in this zone because the sediments towards to are more clastic and followed by oxidation which subsequently unfavourable for the pollen preservation. The presence of lignite in upper part of this section indicates swampy and marshy depositional environment. The opercula are of Bithyniidae (*Digoniostoma* sp. or/and *Gabbia* sp.) are abundant in this lignite layer. Such kinds of freshwater molluscs live in shallow water on macrophytes and also on muddy substrate of

temporary water bodies. The accumulation of empty shells and large number of opercula may be possible in limnic zone of lakes by water transportation and sedimentation over several meters. In every case this water body might be stagnant with large shallow regions. The large bovid molars recorded from the middle part of the section confirms the earlier findings by Paudyal et al. (2011) few hundred meters east of this section.

## CONCLUSIONS

Palynological investigation from the Phaidhoka Section of the Thimi Formation revealed 94 species of plants belonging to 74 genera and 40 families. Palynological record suggests that the climate in the eastern Bhaktapur area was variable and not uniform in Late Quaternary Period. The gymnosperm like *Pinus*, *Picea* and *Tsuga* are most common having higher frequency in middle and upper part of the section. Among the angiosperm trees *Quercus*, *Alnus*, *Betula*, *Myrica*, Oleaceae and Ericaceae are common. The climate during the deposition of uppermost and middle part of this section was comparatively colder than present day indicating cold temperate signature. However, the pollen assemblages indicate warm temperate climatic condition existed during the deposition of the lowermost part of this section.

## ACKNOWLEDGEMENT

We would like to express our sincere thanks to Prof. Dr. Lalu Paudel, Head of the Central Department of Geology, Tribhuvan University (CDG, TU) Kirtipur, for his support and cooperation to carry out this research at CDG, TU.

## REFERENCES

- Bhandari, S. and Paudyal, K. N., 2007, Palynostratigraphy and palaeoclimatic interpretation of the Plio-Pleistocene Lukundol Formation from the Kathmandu valley, Nepal. Jour. Nepal Geol. Soc., v. 35, pp. 1-10.
- Ferguson, D. K., Zetter, R., and Paudyal, K. N., 2007, The need for the SEM in Palaeopalynology. Comptes Rendus Palevol, v. 6(6-7), pp. 423-430.
- Fuji, R. and Sakai, H., 2001, Palynological study of the drilled sediments from the Kathmandu basin and its palaeoclimatic and sedimentological significance. Jour. Nepal Geol. Soc., v. 25 (Sp. Issue), pp. 53-61.
- Fujii, R. and Sakai, H., 2002, Paleoclimatic changes during the last 2.5 myr recorded in the Kathmandu basin, Central Nepal Himalayas. Jour. Asian Earth Sci., v. 20, pp. 255-266.
- Gajurel, A. Huyghe, P., France-Lanord, C., Mugnier, J. L., Upreti, B. N., and Le Fort, P., 1998, Seismites in Kathmandu basin, in Nepal. Jour. Nepal Geol. Soc., v. 18, pp. 125-134.
- Igarashi, Y., Yoshida, M., and Tabata, H., 1988, History of vegetation and climate in the Kathmandu valley. Proc. Indian Nat. Sci. Acad., v. 54A(4), pp. 550-563.

- Kizaki, K., 1994, An Outline of the Himalayan Uplift, a case study of the Nepal Himalaya. JICA (Japan Intl. Coop. Agency), 127 p.
- Moribayashi, S. and Maruo, Y., 1980, Basement topography of the Kathmandu Valley, Nepal- an application of gravitational method to the survey of a tectonic basin in the Himalayas. Jour. Japan Soc. Engg. Geol., v. 21, pp. 30-37.
- Paudyal, K. N., 2005, Late Pleistocene pollen assemblages from the Thimi Formation, Kathmandu valley, Nepal. The Island Arc, v. 14(4), pp. 328-337.
- Paudyal, K. N., 2006, Late Pleistocene pollen assemblages from the Gokarna Formation, Kathmandu valley. Jour. Nepal Geol. Soc., v. 33, pp. 33-38.
- Paudyal, K. N., 2011a, High resolution palynostratigraphy and climate from the Late Quaternary Besigaon section belonging to Gokarna Formation in the Kathmandu valley. Jour. Strat. Assoc. Nepal, v. 7, pp. 33-38.
- Paudyal, K. N., 2011b, Palynological assemblages from the Late Pleistocene sediments of the Patan Formation in Kathmandu valley and their climatic implications. Bull. Dept. Geol., Tribhuvan University, v. 14, pp. 59-66.
- Paudyal, K. N. and Ferguson, D. K., 2004, Pleistocene palynology of Nepal. Quaternary International, v. 117, pp. 69-79.
- Paudyal, K. N., Panthee, S., and Hertler, C., 2011, A bovid specimen from Late Pleistocene deposits in the Kathmandu basin, Nepal. Jour. Strat. Assoc. Nepal, v. 7, pp. 9-14.
- Vishnu-Mittre and Sharma, C., 1984, Vegetation and climate during the last glaciation in the Kathmandu valley. Pollen et Spores, v. 36, pp. 69-94.
- Yoshida, M. and Gautam, P., 1988, Magnetostratigraphy of Plio-Pleistocene lacustrine deposits in the Kathmandu valley, central Nepal. Proc. Ind. Nat. Sci. Acad., v. 54A(30), pp. 410-417.
- Yoshida, M. and Igarashi, Y., 1984, Neogene to Quaternary lacustrine sediments in the Kathmandu valley, Nepal. Jour. Nepal Geol. Soc., v. 4, pp. 73-100.
- Zetter, R., 1989, Methodik und bedeutung einer routinemaessig kombinierten lichtmikroskopischen und rasterelektronmikroskopischen untersuchung fossiler mikrofloren. Courier Forschungsinstitut Senckenberg, Frankfurt am Main, v. 109, pp. 41-50.