

Thoracoscopic Surgery for Posterior Mediastinal Mass: Our Initial Experience

Ranjan Sapkota,¹ Prakash Sayami¹

¹Department of Cardio-Thoracic and Vascular Surgery Institute of Medicine, Tribhuvan University, Kathmandu, Nepal.

ABSTRACT

Background: Thoracoscopic surgery has been increasingly used for a variety of indications. Posterior mediastinal tumors form an important component of a thoracic surgeon's workload. This report represents a summary of our initial experience in thoracoscopic management of such tumors. **Methods:** We retrospectively reviewed the clinical and operative data from records over the study period. We also describe our usual perioperative management and surgical techniques. **Results:** A total of 11 patients, 8 being females, were operated during the period of 30 months. Seven were incidental findings, and chest pain was the commonest presentation in symptomatic patients. The mean age of the patients was 38.7 years; mean tumor diameter was 4.4 cm; eight had benign schwannoma, and no patient had a malignant tumor. Mean operative duration was 175.5 min; there were no conversions and no transfusion was required. Mean length of stay in the hospital was 5.6 days. There were no perioperative deaths or major complications. Three minor complications were recorded. Follow-up (4 to 18 months) was uneventful. **Conclusions:** Thoracoscopic management of posterior mediastinal tumors is feasible and safe.

Keywords: neurogenic tumor; posterior mediastinum; thoracoscopic Surgery.

INTRODUCTION

The last decade of the last century saw a great leap of progress of thoracoscopic surgery. Until then it was essentially limited to treatment of pneumothoraces, bullae and non-anatomic lung resections.¹ Continuous innovations in tools, techniques and tricks gradually brought thoracoscopy to the forefront of most of the thoracic procedures. The progress made in pulmonary resections also paralleled that in mediastinal surgeries. Unprecedented exposure of the whole ipsilateral mediastinum, versatility of movements and significant reduction of access trauma make it particularly useful in mediastinal surgeries. As such, after the first report of a thoracoscopically removed posterior mediastinal mass in 1992 by Landreneau, it has established itself as a reasonable alternative to thoracotomy for lesions of the posterior mediastinum.^{2, 3} This paper will summarize our initial experience in the use of thoracoscopy for posterior mediastinal mass at a few hospitals, primarily Manmohan Cardiothoracic Vascular and Transplant center.

METHODS

A retrospective review was done, spanning a period between March 2016 and October 2019, of patients

who underwent thoracoscopic excision of their posterior mediastinal masses in four different hospitals by the same surgeons. From patients' records, essential preoperative profile, operative details and postoperative information were retrieved, observed and analyzed, and relevant literature reviewed.

Preoperative evaluation: All patients, either incidentally diagnosed or symptomatic, were evaluated with a standard set of tests. In both the groups, a chest x-ray would usually suggest the possibility of a mediastinal mass. A contrast-enhanced computed tomogram (CECT) of the chest would usually follow (Figure 1). Essentially, a posterior mediastinal mass was a CECT-based diagnosis. For all the masses thus visualized, a magnetic resonance imaging (MRI) of the chest followed, to better evaluate the tumor, its relations and its intraspinal extension. In both, features such as size, location, contiguous relation, bone erosion, loss of fat planes, extension into spinal canal, presence of pleural effusion and 'other' pleural lesions were specifically sought for. An image-guided needle aspiration or trucut biopsy would generally be avoided for a number of reasons: technical difficulty due to peculiar location,

Correspondence: Dr. Ranjan Sapkota, Manmohan Cardio-Thoracic Vascular and Transplant Center, Institute of Medicine, Tribhuvan University, Kathmandu, Nepal. **Email:** ranjansapkota@gmail.com. **Phone:** +977-9851135495. **DOI:** 10.3126/jcmsn.v15i2.24174. **Article Received:** 2019-1-16. **Article accepted:** 2019-06-12.

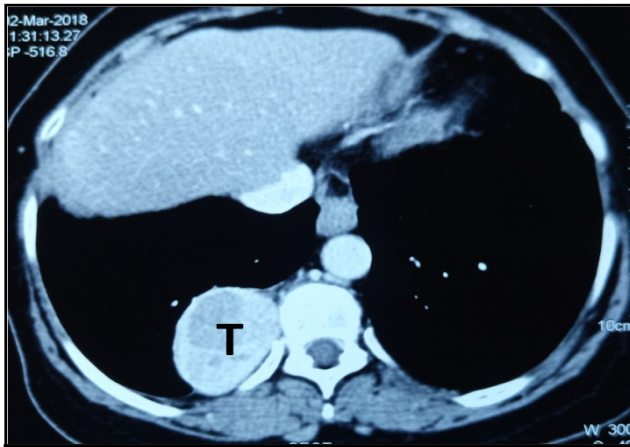


Figure 1. CECT chest showing a typical posterior mediastinal neurogenic tumor. Histology revealed benign schwannoma. T: tumor

generally vascular nature of these tumors, insufficient material for confirmatory diagnosis because of relative acellularity of these tumors, and also, a general agreement on excision biopsy firsthand.⁴ Anesthetic fitness would be ensured, including an adequate lung function to allow single-lung ventilation.

Anesthesia and Positioning

A double lumen tube would provide the desired operative field with the lung adequately collapsed. Its final position would always be confirmed with a fiberoptic bronchoscope after positioning. It would be a full lateral decubitus position with the body rotated slightly anteriorly (so that the lung falls away), and the table bent to 45° at a level slightly

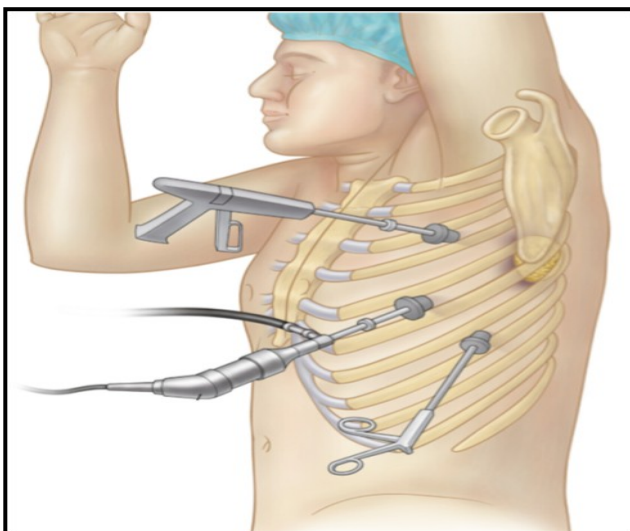


Figure 2. Diagrammatic depiction of patient position and ports. The actual patient tilt and exact port placement varies in each patient. [Picture from reference (6)].

below the nipples, to open up the intercostals spaces (Figure 2). Invasive blood pressure, ECG, pulse

oximetry, end-tidal CO₂, airway pressure and ventilator volumes were routinely monitored and optimized. A central line catheter and an epidural catheter were infrequently used.

Instrumentation: An instrument set for urgent conversion to thoracotomy would always be available in the room. Unlike anterior mediastinal procedures, the wide space created by a collapsed lung would generally preclude the use of both, CO₂ insufflation or valved ports. For ease of handling and cost-effectiveness without loss of efficiency, conventional thoracic instruments were used when possible. Similarly, conventional laparoscopic instruments, readily available, were used. Curved instruments, like the curved-tip monopolar electrocautery hook, curved atraumatic sucker-dissector and curved sponge-holders made dissection easy. A 10-mm 30° Karl-Storz telescope and compatible video-system (Karl Storz, Tuttlingen, Germany) were used in all.

Ports and Procedure

The surgeon would always stand anterior to the patient, and ports would be placed to comply with that requirement. Realizing the well-known versatility of port-placement in thoracoscopic surgery, each case was dealt with individually, considering patient’s body habitus and location of the lesion. However, a general pattern was followed. Three 10 mm ports were used in all the patients. The first port would usually be slightly posterior to the anterior axillary line at the 5th (or 6th) intercostals space (ICS), establishing initial thoracoscopic view and subsequently guiding the other two. The second and third ports would be placed at the 3rd (or 4th) ICS and 7th (or 8th) ICS, posterior to the midaxillary line. (Fig 2) In females, ports could be slightly altered so as not to enter the breast. These ports generally followed triangulation principle to avoid ‘fencing’ and fell within the same 180° arc to avoid mirror-imaging. Telescope and the instruments were exchanged between ports as necessary. A careful inspection of the tumor and the whole pleural space would generally be the first step (Figure 3).

An improvised ‘bag’ of a large surgical glove was used to retrieve the specimen at the end. The tumor was generally extracted through the most anterior port as the ICS is the widest anteriorly. The tumor bed was routinely inspected and hemostasis ensured. Where possible, an extrapleural catheter for postoperative analgesia would be inserted under vision. If however, because of the pleural loss/breach this catheter could not be the best choice; multiple intercostal nerves were blocked under vision using 0.25% Bupivacaine. Finally, the lung

was inflated under vision over a 28 Fr chest tube placed basally and brought out through the inferior port which was then closed in layers, as with the other ports. Patients were extubated at the end of the procedure and transferred to intensive care units for subsequent monitoring, analgesia, physiotherapy and care. Typically they would leave ICU for general ward the following day. The chest tube, functional and without air leak, would be removed when a 24-hour output, serous or serosanguinous, was less than 100 ml, with a fully

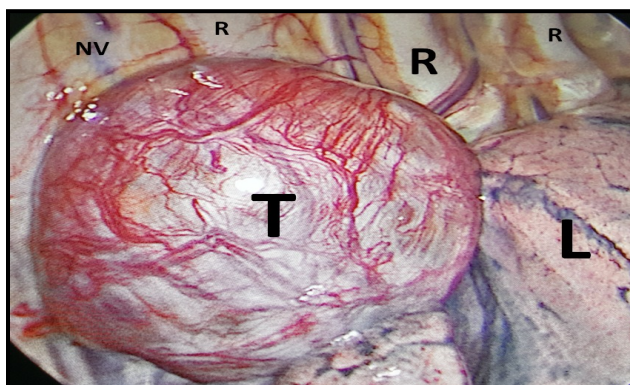


Figure 3. Thoracoscopic view of the tumor in the right chest. Picture's right side is patient's cephalic end. Note the vascular tumor surface, and the collapsed lung. T: Tumor; R: Rib; L: Right lung, upper lobe; NV: Intercostal neurovascular bundle

inflated lung on chest x-ray. Patients would be discharged when they were fully ambulatory, tolerating pain with oral analgesics and resumed a near normal diet.

RESULT

A total of 11 patients with posterior mediastinal tumors were managed during the period. Pertinent clinical and operative details are summarized in

Table 1. Majority (8/11) were females. Patients ranged from 18 years to 63 years (Mean 38.7). Seven out of 11 were incidentally diagnosed. All of the symptomatic patients had chest pain as their primary symptom. Average tumor size was 4.4 cm (range: 3.5-7). Nine had a right sided lesion. One of the patients had been subjected to multiple unsuccessful attempts at CT guided biopsy in the referring hospital. None others had an image-guided procedure preoperatively. Eight of the 11 lesions were located below the level of azygous/arch. One (Patient 5; Table 1) had an intraspinal component (dumb-bell). On an average, it took 175.5 min (range: 90-300) for the procedure to finish (163 min for the 'non-dumb-bell' tumors only). None required conversion or blood transfusion. One of the tumors (Patient 10; Table 1) had a broad base and the portion near the neural foramen had to be left behind for fear of intractable bleed. The bronchogenic cyst (Patient 3; Table 1) was densely adherent to the left atrium and a centimeter-wide base had to be left behind and curetted. Histopathological evaluation showed that ten of the tumors were neurogenic, and 8 of ten: schwannoma (Figure 4).

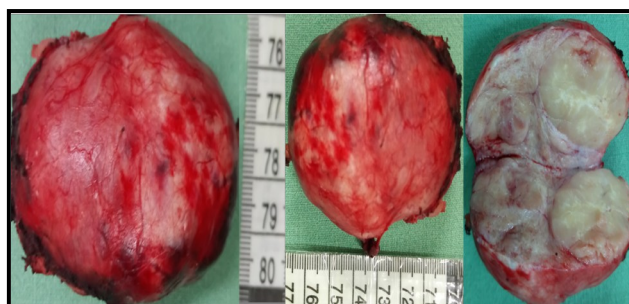


Figure 4. A schwannoma after extracapsular excision. Cut section on the extreme right.

Table 1. Clinical and perioperative data of the patients.

Patient	Age (yr)/ Sex	Primary symptom (duration in months)	Largest diameter (cm)	Side	Consistency	Post-op histology	Duration of surgery (min)	Post-op day of chest tube removal	LOS (days)
1	33/F	Incidental	4	R	solid	Schwannoma	90	2	4
2	18/M	Incidental	5	R	Solid	Paraganglioma	180	2	4
3	40/M	Chest pain (12)	3.5	R	pultaceous	Bronchogenic cyst	170	3	5
4	63/F	Chest pain (6)	7	R	solid	Schwannoma	180	2	5
5	29/F	Chest and back pain (5)	4	L	solid	Schwannoma	300	3	5
6	22/F	Incidental	3	R	solid	Schwannoma	190	2	4
7	42/F	Incidental	4	R	solid	Ganglioneuroma	160	3	6
8	37/F	Incidental	5	L	solid	Schwannoma	150	2	4
9	32/F	Chest pain (7)	4.5	R	solid	Schwannoma	180	3	6
10	50/M	Incidental	5	R	solid	Schwannoma	190	3	4
11	58/F	Incidental	4	R	solid	Schwannoma	140	3	5

The chest tubes came out on the second or third day; and the average hospital stay was 5.6 days (range: 4-6). No hospital deaths or major complications were noted. One (Patient 1; Table 1) patient had Horner's syndrome which resolved over 6 months. One other (Patient 7; Table 1) had superficial wound infection and another (Patient 9; Table 1) had postoperative chest infection: both got better with treatment. All patients were clinically followed up for at least 4 months (maximum 18 months). No X-ray evidence of recurrence was found until the last follow up for each patient (Figure 5).

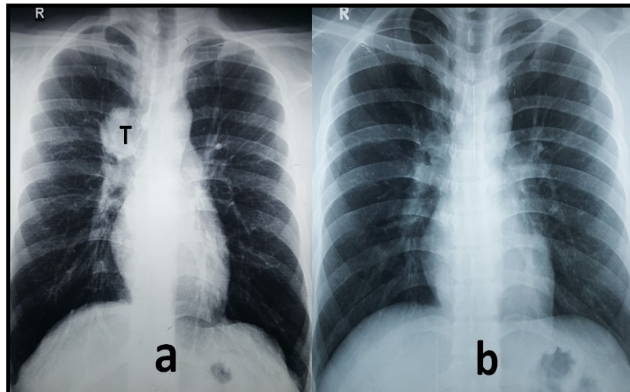


Figure 5. Chest X-ray of a patient: a. preoperative; b. at 3 months after operation. T: tumor

DISCUSSION

Ninety-five percent of the posterior mediastinal masses are neurogenic tumors; 95% of them are benign and 95% of the intrathoracic neurogenic tumors are in the posterior mediastinum.⁵ In the late 1990's, surgeons used to report their hesitations in choosing thoracoscopic surgery over thoracotomy for treatment of mediastinal masses in general. However, when only posterior mediastinal masses were considered, there was already a growing acceptance for the minimally invasive procedure.^{4,5} Part of the reason, as noted above, is that a posterior mediastinal mass is more likely to be a benign neurogenic tumor than otherwise. The advantages of thoracoscopy over thoracotomy (less access trauma, less disruption of immune function, less pain, shorter stay, and rapid recovery) have been extensively described.³⁻⁸ Moreover, as most of these patients tend to be younger, as was also demonstrated in this report; cosmetic benefit can also be a potential credit. Posterior mediastinal tumors are mostly asymptomatic, and are thus incidentally found. They are generally more common in younger population, and females.^{5,7} Our observation has, too, been similar in all these respects. Also, our experience reaffirms the preponderance of schwannoma amongst these lesions.⁸ Is preoperative tissue diagnosis

mandatory? Generally these tumors, in the absence of features like bone erosion, pleural or lung nodules or pleural effusion, and with a well-maintained fat plane with surrounding structures, can be safely assumed to be non-malignant. Moreover, the cytological or histological diagnosis is difficult to achieve in the samples, for reasons mentioned earlier.^{4,8} But caution should be practiced in dealing with symptomatic patients, those with history of concurrent or past malignancies and in those with doubtful radiologic features. Kim et al and others have reported about lessons learned from assuming all posterior mediastinal tumors to be neurogenic.^{9,19} All the patients in our series were 'cleared' from a multidisciplinary meeting with the radiologists, and hence a need for preoperative tissue diagnosis. Notably, one patient had a few attempts at needle aspiration before presenting to us. Minimally invasive thoracic surgery is shifting from 3-port to 2-port to a single-port approach, for both pulmonary and mediastinal surgeries.^{2,10,11}

Nevertheless, some even advocate adding a fourth port for additional traction.¹⁰ However, the 'standard' 3 ports have been both, necessary and adequate for us. The tumor-size threshold is also a debated topic in thoracoscopic surgery. While traditionally a cut-off value of 4 cm has been agreed upon, it has been largely derived from the experience with transcervical thymectomy.¹⁰ As experience grew, different cut-off values like 6 cm or 8 cm have been proposed.^{4,12,13} In any case, common sense dictates that extending the anterior port to a small 'utility' incision would still be preferred to a full thoracotomy, as long as the extension is not so large as to offset the benefits of thoracoscopic approach. We generally dilate the anterior port and deliver the tumor under vision with moderate force, but we do not hesitate to extend the incision slightly in need. Dumbbell tumors are said to account for 10% of posterior mediastinal tumors¹⁶, comparable to our finding (1 out of 11). With regards to their excision, there are pros and cons of doing thoracoscopy first.^{4,8,12,14-16}

We stick to the traditional laminectomy-thoracoscopy approach, as this, in our view, is more justified. This allows us to remove the tumor en-bloc; it allows us to evaluate the hemostasis towards the 'spinal end' of dissection. Moreover, it avoids the traction-effect on the spinal cord during thoracic dissection. Operative durations have been variously reported, ranging from 83.5 min to 270 min on average.^{5,17,18} Surely a surgical team's

learning curve has an important bearing on it, and we have realized that ourselves in our current practice. Similarly, our mean chest tube duration, length of hospital stay and incidence of complications have been comparable with published reports.^{5,8}

CONCLUSIONS

Most posterior mediastinal tumors are benign neurogenic tumors. In the treatment of patients with these tumors, thoracoscopic surgery is feasible, safe and acceptable.

REFERENCES

1. Roviario G, Rebuffat C, Varoli F, et al. Videothoroscopic excision of mediastinal masses: indications and techniques. *Ann Thor Surg* 1994;58:1679-84.
2. Yu PSY, Ng, CSH. Novel perspectives in the surgical treatment of posterior mediastinal masses. *J Vis Surg* 2018;4:119.
3. Landreneau RJ, Dowling RD, Ferson PF. Thoracoscopic resection of a posterior mediastinal neurogenic tumor. *Chest* 1992;102:1288-90.
4. Ng CSH, Yim APC. Technical advances in mediastinal surgery: videothoroscopic approach to posterior mediastinal tumors. *Thor Surg Clin* 2010;20:297-309
5. Zhang Z, Leiu D, Guo Y, et al. Preferred surgical procedure for posterior mediastinal tumors. *Thoracic Cancer* 2012;3:68-71.
6. Demmy TL, Krsna MJ, Detterbeck FC, et al. Multicenter VATS experience with mediastinal tumors. *Ann Thor Surg* 1998;66:187-92.
7. Cardillo G, Carleo F, Khalil MW, et al. Surgical treatment of benign neurogenic tumors of the mediastinum: a single institution report. *Eur J Cardiothorac Surg* 2008;34:1210-14.
8. Chen X, Ma Q, Wang S, et al. Surgical treatment of posterior mediastinal neurogenic tumors. *J Surg Oncol* 2019;(1-7).
9. Kim S, Yoo B, Baaj A, et al. Resection of a posterior mediastinal mass: lessons learned from a failed exploration for presumed schwannoma. *J Thorac Cardiovasc Surg* 2016;152:e75-7.
10. Marshall MB, Demarchi L, Emerson DA, et al. Video-assisted thoracoscopic surgery for complex mediastinal mass resections. *Ann Cardiothorac Surg* 2015;4(6):509-18.
11. Wu CY, Heish MJ, Wu CF. Single-port VATS mediastinal tumor resection: Taiwan experience. *Ann Cardiothorac surg* 2016;5(2):107-11.
12. Liu Hp, Yim AP, Wan J, et al. Thoracoscopic removal of intrathoracic neurogenic tumors: a combined Chinese experience. *Ann Surg* 2000;232:187-90.
13. Riquet M, Mouroux J, Pons F, et al. Videothoroscopic excision of thoracic neurogenic tumors. *Ann Thor Surg* 1995;60:943-6.
14. Kan P, Schmidt MH. Minimally invasive thoracoscopic resection of paraspinal neurogenic tumors: technical case report. *Neurosurgery* 2008;63(1 Suppl 1):ONSE54.
15. Valieres E, Findlay M, Fraser RE. Combined microneurosurgical and thoracoscopic removal of neurogenic dumbbell tumors. *Ann Thor Surg* 1995;59:469-72.
16. Heltzer JM, Krsna MJ, Aldrich F, et al. Thoracoscopic excision of a posterior mediastinal 'dumbbell' tumor using a combined approach. *Ann Thor Surg* 1995;60:431-3.
17. Cansever L, Kocaturk AI, Cinar HU, et al. Benign posterior mediastinal tumors results of a comparative study into video-assisted thoracic surgery and thoracotomy (13 years' experience). *Thorac Cardiovasc Surg* 2010;58:473-5.
18. Bousamra M, Haasler GB, Paterson GA, et al. A comparative study of thoracoscopic vs open removal of benign neurogenic mediastinal tumors. *Chest* 1996;109:1461-5.
19. Silver JM, Losken A, Young AN, et al. Ewing's sarcoma presenting as a posterior mediastinal mass: a lesson learned. *Ann Thor Surg* 1999;67:845-7.

Citation: Sapkota R, Sayami P. Thoracoscopic Surgery for Posterior Mediastinal Mass: Our Initial Experience. *JCMS Nepal*. 2019; 15(2):75-9.