



# INTERNATIONAL JOURNAL OF ENVIRONMENT

Volume-3, Issue-1, Dec-Feb 2013/14

ISSN 2091-2854

Received:20 January

Revised:30 January

Accepted:1 February

## FLORISTIC RICHNESS IN CATCHMENT AREAS OF PAPAGINI RIVER – A TRIBUTARY OF RIVER PENNAR, ANDHRA PRADESH, INDIA

Rajendra Kumar \*.S

Science and Humanities, Mookambigai College of Engineering, Srinivasa Nagar, Kalamavur,  
Pudukottai, Tamil Nadu - 622 502, India

\*Corresponding author: meen\_rajendrakumar@yahoo.co.in

### Abstract

A floristic inventory study was carried out in Papagini river basin of Andhra Pradesh during January - December, 2008. Species richness showed 545 species. The family, genera and lifeform dominance were determined by dry climatic conditions of this region, thus makes the dominance of Poaceae, Fabaceae, Euphorbiaceae, Acanthaceae and Asteraceae as family level and *Acacia*, *Euphorbia*, *Cassia*, *Commelina* and *Ficus* as genera level. The order of lifeforms dominance was herbs, shrubs, trees, grasses and climbers. Further, the ecosystem functions were inspected and predictions were made on future existence of river ecosystems based on present human interventions. There were possibilities of loss of native vegetation, which impede the river functions and destabilization of ecosystem. Hence, to restore/preserve river basin, the Natural Resources Conservation methods were recommended.

Key words: species richness, river basin, natural resources, forest loss, Papagini

### Introduction

Floristic richness of a region depict the natural assemblage of plants, which includes informations on numbers of families, genera and species, dominant families, dominant genera and major lifeforms of particular habitat. The measurement of floristic richness of particular habitat were conducted by several authors in ranging period (Whittaker and Niering, 1965; Risser and Rice, 1971; Gentry, 1988; Linder et al., 1997; Chittibabu and Parthasarathy, 2000; Sagar et al., 2003; Padalia et al., 2004; Appolinario et al., 2005). Inventorying the floristic richness was a necessary prerequisite for the fundamental research in community ecology (Phillips et al., 2003). The results from the inventory studies were used as an indicators to predict the disturbance intensity (Denslow, 1995 and Kennard et al., 2002), species association (Condit et al., 1996), altitudinal variation of species, genera and families

(Vazquez and Givnish, 1998 and Hussain et al., 2008), vertical compositions of forest layers (Singh, 2003), species growth in microclimatic and edaphic conditions (Chauhan et al., 2008), and contrast of species between traditional managed forest and reserve forest (Negi et al., 2008). Further, the data was used for developing conservation strategies related to land management practices (Strok and Samways, 1995), identification of diverse hotspots/distinct ecological communities (Matthew et al., 2005). Some of the study was also carried out to assess the prevailing environmental conditions (Vitousek, 1975) nature of underlying soils, local climate, current and past management interventions (Goldsmith, 1992).

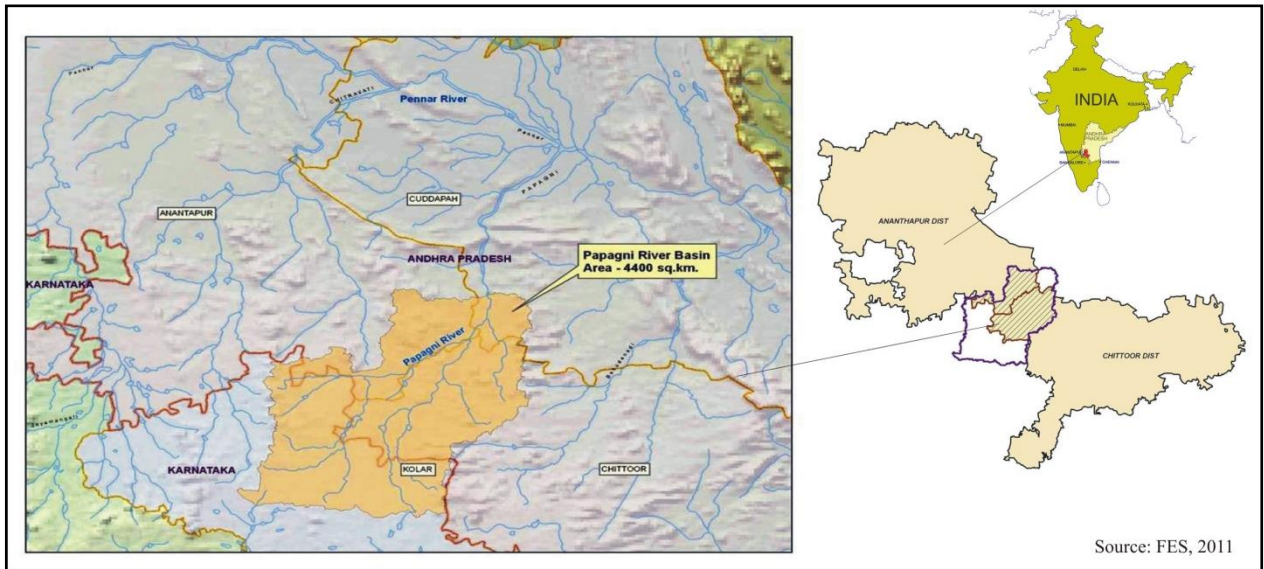
In reverse, the prevailing climatic conditions and disturbance factors were directly influences the species survival, richness, families and genera dominance of an ecosystem (Hansen et al., 1988; Sirois and Payette, 1991; Mast and Veblen, 1999). With all these features, plants were considered as a bioindicators of the environmental quality (Begon et al., 1990; Ghani and Khalik, 2005). Hence, the study on plant species would give us the insight into the knowledge about the ecosystems.

The river basins belong to the Deccan Peninsula region, relatively homogenous climate. Forest types ranges from semi-arid to moist-deciduous/semi-evergreen type. It was the ecotone region between Western Ghats in the west, Eastern Ghats in the east and the Deccan plateau in the north (FES, 2011). The uplands were the broken ranges of the Eastern Ghats and outcrops of the lower Vindhyan and Cuddapah systems. The Vindhya and Satpura hill range were known for a rich diversity of flora. With these peculiar features, the river basin study was carried out with the aim of “assess the floristic richness and ecosystem characteristics of Papagini river basin”.

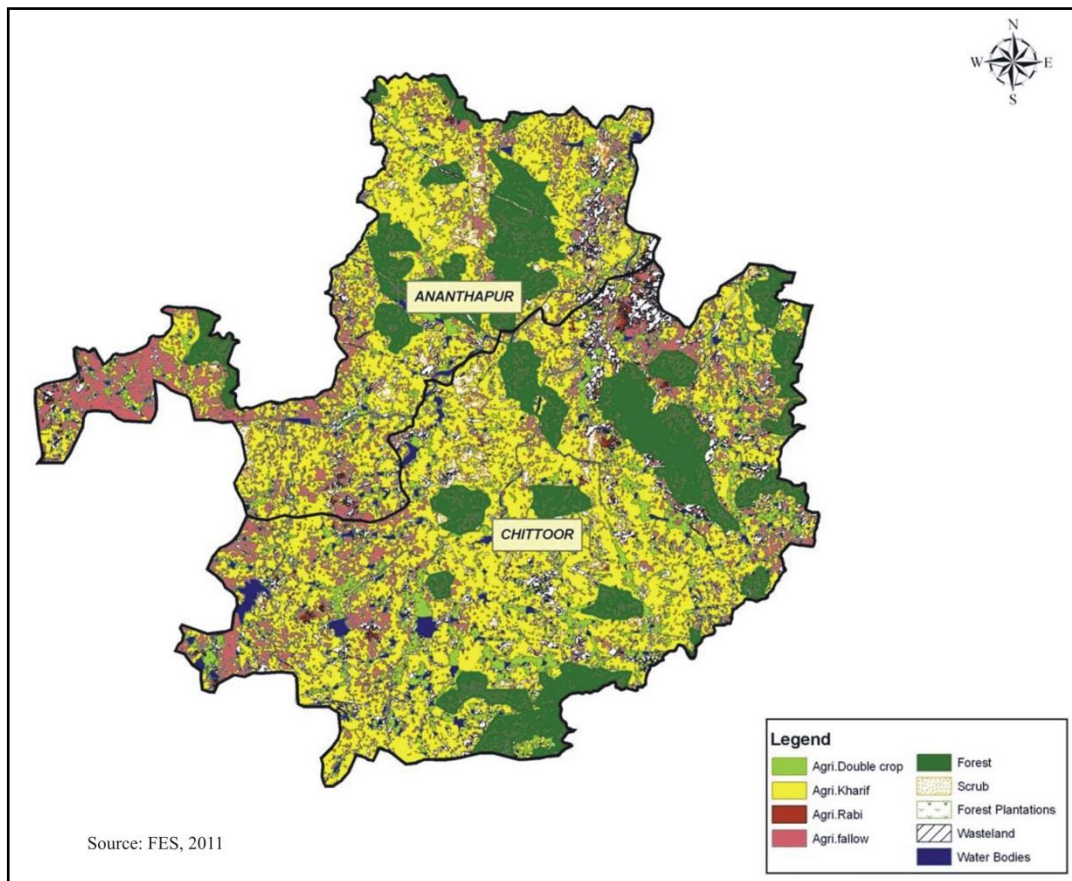
## **Study Area**

The study area falls in the southernmost part of region of Andhra Pradesh, where the three semi-arid districts of Chittoor, Cuddapah, and Anantapur of southern Andhra Pradesh meet and lay the uplands that form the catchment of the river Papagni - a tributary of river Pennar (Map 1). It spread between 26°03'36" and 13°14'61" N latitudes and 59°26'27" and 70°39'22" E longitudes (FES, 2011). The elevation ranges from 300m to 1300m above MSL and the temperature varies from 10°C in winter to 45°C in summer. The climate was characterized by hot, dry summer and mild winter. Total area of river basin 34, 28, 100 ha (FES, 2011) and land use pattern of study area was given in Map 2. Hydrogeomorphologically the study area have excellent ground water potential (Krishnaiah, 2013). The soil types were classified as red and black sandy, clay and red loamy.

There were two main forest types: Southern Tropical Dry mixed Deciduous Type (5A/C3) and Southern Tropical Thorn Type (6A/C1) (Champion and Seth, 1966). However, it difficult to distinguish sharply above two types from each other, as they often coalesces into each other. In these forests, the trees begin to shed leaves by about December and between February and May. The forests look very open, but no area was completely leafless at any given time of the year. Flowering and fruiting were generally before the onset of the southwest monsoon.



**Map 1: Location of Study Area – Papagini river basin**



**Map 2: Land use map – Papagini river basin**

### Methodology

A floral inventory was carried out from January – December, 2008. The random belt transect method was adopted. Based on the habitat extent, availability of microhabitats, place and areas for each habitat type, the varied length of transect was developed. Throughout the length of transect, the transect walk method was adopted and all the plants were documented.

Surveys were repeated all the three seasons to get the maximum list of species (Singh, 2003; Ghani and Khalik, 2005 and Negi et al., 2008). All the plants were identified from their key vegetative and reproductive features using the guide to the regional flora viz. Flora of Andhra Pradesh vol - I, II and III (Pullaiah and Chennaiah, 1997; Pullaiah and Ali Mouali, 1997 and Pullaiah, 1997), and other published literatures. When taxon identification appeared uncertain in the field, the specimens were collected for later validation of the species.

## Results and Discussions

An overall 545 species belonging to 90 families and 307 genera were recorded from the Papagini river basin (Table 1 & Annexure 1). The recorded species richness from river basin, was fully depends on extent of area, availability of micro habitats, and auspicious environment (Kohn and Walsh, 1994). Family dominance showed Poaceae with 62 species, followed Fabaceae - 41, Euphorbiaceae - 28, Acanthaceae - 23 and Asteraceae - 20 species (Table 2). The reported families were frequently reported from other river basin where the similar semi-arid climatic conditions were recorded (Vyas, 1965; Rai, 2002; Patel, 2002; Rajendra kumar, 2010). Dominant families from this region were significantly influences the establishment of genera. At the genera level, *Acacia* and *Euphorbia* dominates with 10 species, followed by *Cassia* - 9, *Commelina* - 7 and *Ficus* - 6 species (Table 2). The recorded genera from river basin were clearly indicates the environmental condition of this region. Dominance of *Acacia* and *Euphorbia* was a good indication of dry climatic condition and relatively a disturbed ecosystem. *Cassia*, *Acacia* and *Euphorbia* dominance indicates the well of establishment of Leguminosae (Fabaceae, Mimosaceae and Cesalpinaceae) and Euphorbiaceae respectively (FES, 2011). The presence of *Commelina* and *Ficus* species indicate the availability of little persistent moisture in the river basin (Rajendra kumar et al., 2011).

**Table 1: Floristic Richness of Papagini River basin**

	Tree	Shrub	Climber	Herb	Grass	Total
Family	38	35	10	49	2	90
Genus	70	75	19	133	36	307
Species	104	117	21	233	70	545

Dominant lifeform of the river basin was herbs with 233 species followed shrubs (117 species) trees (104) grasses (70) and climbers (21) (Table 1). Herb form was mainly annuals, seasonal and few perennials plants, and they were monsoon specific. It mainly depends on rainfall, soil moisture and capable to produces large number of seeds and disperses them efficiently. The seeds of such huge amount were capable of producing the viable newer plants with short life span for escaping from harsh conditions. The death and decay of such annuals add more organic matter to the soil than other lifeforms. It directly supports the enduring of shrubs and trees (Rajendra kumar et al., 2011) and makes second and third dominance forms of this region. The relative advantage of shrubs and trees dominance was capable to store water and conserve the soil resources of this region. Annuals and seasonal plants were able to utilize stored water, produce the large number of seeds and make its region specific. Similar trend was reported by Good (1974) and Ghani & Khalik (2005) in Gebel Elba National Park,

Southeast Egypt. Where the dominant families were contains bulk number seasonal plants (annuals), which produce large number of seeds with wide range ecological tolerances and have good dispersal efficiency. The above said factors could be the possible reasons for dominance of herbs from this region.

**Table 2: Dominant family and Genera in Papagini river basin**

Family	Overall	Genus	Overall
Poaceae	62	Acacia	10
Fabaceae	41	Euphorbia	10
Euphorbiaceae	28	Cassia	9
Acanthaceae	23	Commelina	7
Asteraceae	20	Ficus	6

As per the study conducted by FES (2011), *Cymbopogon* was recorded as one of the dominant genera in terms of both ground cover and biomass estimations. This species occupied major area of this region and produce the dominant effect. Naturally, it does not allowing to arise any other native species present in the ecosystem. The well establishment of *Cymbopogon* in one habitat; that indicates frequent occurrence of fire, (Dabafghao and Shankarnarayan, 1973; Yadav and Singh, 1977) grazing and human intervention (Rajendra kumar et al., 2011) of the area. The grazing process establishes patches of mosaics vegetation, surrounded by a pasture matrix and increases the soil erosion (Linera et al., 1997). So the intensity of erosion in the study area was high in both structured and non-structured hill. It exceeds more than 45m<sup>3</sup>/hectare/year (Krishnaiah, 2013). This process gets speed up by the unsustainable practices in agricultural and human intervention in river basin (FES, 2011). Krishnaiah (2013) stated that, the increasing population in study area puts enormous pressure on the land in the basin. As results the land use pattern of this area is keep on changing. A decrease of rainfall has also had its impact on the land. Many formally regular cultivable lands have been transformed in to uncultivable land. Results of that local people have forced to depend on the forest resources for meeting out the day to day needs of their life. Further land has been cleared off for any purposes and after some times, the same land develops or supports secondary vegetation, which is mainly dominated by exotic species that grow faster (Turner et al., 1994) and constrain the native species (Kruckeberg and Rabinowitz, 1985; Gentry, 1986; Major, 1988). Though, the dominance of non-native species influences the floristic richness and regular functions of the ecosystem. Basically these species act as ‘biological pollutants’ owing to their often disruptive /destabilizing effects on natural ecosystems (West brooks, 1991). Hence, there is a probability of occurrence above said effects in Papagini river basin system.

Finding out species richness was one of the most significant objectives of this study. Spatial heterogeneity and species richness in particular, was an obvious feature of the natural world. Understanding of its determinants will impinge on applied issue for the role of biodiversity in ecosystem process (Gaston, 2000). Species composition of an area was important because it seems that the multiple factors doubtlessly contribute to, or influence the biodiversity of an area, because species alteration can limit the available resources. It has strong effects on ecosystem processes by directly mediating energy and material fluxes or by

altering abiotic conditions that regulate the rates of these processes (Hooper and Vitousek, 1997; Tilman et al., 1997).

Besides the variations in habitats and plant communities, the whole study area was dominated by few families, which result of dry climatic conditions and frequent human intervention. The recorded dominant families were directly influences the dominance of genera and establishment of plant lifeform. The existing plant communities/species in river basin is safeguarding the drainage pattern and ecosystem functions. It acts as a disturbance buffer between human related interventions and environmental factors. But, the intervention exceeds balancing limits would results considerable reduction of forest cover, leads to loss of native species and establishment of non-native species. Above said changes in study area affects the regular functions of fluvial plains. To preserve and maintain the regular functions of ecosystems, the implementation the natural resources conservation program like watershed development, restoration of native species through afforestation, clearing of invaders, sustainable agricultural practices, reduce the human interventions and creating awareness among the people regarding natural resources usage and land management practice.

### **Acknowledgement**

The author wish to acknowledge Foundation for Ecological Security (FES), Anand, Gujarat, for funding, constant encouragement, supports and facilities provided during the study period. Many thanks are due to Papagini Cell of FES, Andhra Pradesh, project staffs and field associates for facilitating during field visit and timely completion of this work. The author place heartfelt thanks to Management of Mookambigai College of Engineering, Pudukottai, Tamil Nadu for support, facilities provided during the writing stage of this paper. A special thanks to Dr. K. Mophin Kani, M.Sc., Ph.D., Assistant Professor, Gnanamani College of Engineering, Namakkal, Tamil Nadu, for sharing his feedback about this paper.

### **References**

- Appolinario, V., Filho, A.T.O. and Guilherme, F.A.G., 2005. Tree population and community dynamics in a Brazilian tropical semideciduous forest. *Revista Brasil* 28: 347-360.
- Begon, M.J., Harper, L. and Twonsend, C.R., 1990. *Ecology*. Black-well Science publications, London.
- Champion, H.G. and Seth, S.K., 1968. *Revised Forest types of India*. Government of India Publications, New Delhi.
- Chauhan, D.S., Dhanal, C.S., Singh, B., Chauhan, S., Todaria, N.P. and Khalid, M.A., 2008. Regeneration and tree diversity in natural and planted forest in a Terai-Bhabhar forest in Katarniaghat Wildlife Sanctuary, India. *Tropical Ecology* 49(1): 53-67.
- Chittibabu, C.V. and Parthasarathy, N., 2000. Attenuated tree species diversity in human-impacted tropical evergreen forest sites at Kolli hills, Eastern Ghats, India. *Biodiversity and Conservation* 9: 1493-1519.
- Condit. R., Hubbell, S.P. and Lafrankie, J.V., 1996. Species-area and species-individual relationship for tropical trees: A comparison of three 50-ha plots. *Ecology* 84: 549-562.
- Dabadgho, P.M. and Shankarnarayan, K.A., 1973. *The grass Covers of India*. Indian Council of Agricultural Research, New Delhi
- Denslow, J.S., 1995. Disturbance and diversity in tropical rain forests: The density effect. *Ecological Applications* 5: 962-968.

- FES., 2011. Eco-profiling, of NABARD Watersheds in Papagni River Basin, Andhra Pradesh. A report prepared by Foundation for Ecological Security, Anand, Gujarat, India.
- Gaston, K.J., 2000. Global patterns in biodiversity. *Nature* 405: 220-227.
- Gentry, A.H., 1988. Tree species richness of upper Amazonian forests. *Proceeding of the National Academy of Science of U.S.A.* 156-159.
- Gentry, A.H., 1986. Endemism in tropical versus temperate communities. Pp 153-181. In: *The Science of Scarcity and Diversity*, Soule, M.E., (ed.) Sinauer Associates, Sunderland, Massachusetts.
- Ghani, M.A. and Khalik, N.A., 2005. Floristic diversity and phytogeography of the Gebel Elba National park, Southeast Egypt. *Turkian Journal of Botany* 30: 121-136.
- Goldsmith, B., 1992. *Vegetation monitoring: Monitoring for conservation and Ecology*. Published by Chapman and Hall, London. 77-86.
- Good, R., 1974. *The Geography of the Flowering Plants*. Fourth Edition. Longman Group Limited, London.
- Hansen, A.J., Di Castri, F. and Risser, P., 1988. A new scope project. Ecotones in a changing environment: The theory and management of landscape boundaries. *Biology International Special Issues* 17: 37-161.
- Hooper, D.U. and Vitousek, P.M., 1997. The effect of plant composition and diversity on ecosystem processes. *Science* 277: 1302-1305.
- Hussain, M.S., Sultana, A., Khan, J.A. and Khan, A., 2008. Species composition and community structure of forest stands in Kumaon Himalaya, Uttarakhand, India. *Tropical Ecology* 49(2): 167-181.
- Kennard, D.K., Gould, K. and Putz, F.E., 2002. Effect of disturbance intensity on regeneration mechanisms in a tropical dry forest. *Forest Ecology and Management* 162: 197-208
- Kharkwal, G., Mehrotra, P., Rawat, Y.S. and Pangtey, Y.P.S., 2004. Comparative Study of herb layer diversity in Pine forest stands at different altitudes of Central Himalaya. *Applied Ecology and Environmental Research* 2(2): 15-24.
- Kohn, D.D. and Walsh, D.M., 1994. Plant species richness-the effect of island size and habitat diversity. *Ecology* 82: 367-377.
- Krishnaiah, Y.V., 2013. Landuse pattern and Landuse Efficiency of the Papagni River Basin, India. *Indian Journal of Spatial Science*. 4(1): 59-68.
- Kruckeberg, A.R. and Rabinowitz, D., 1985. Biological aspects of endemism in higher plants. *Annual Review of Ecology Systematics* 16: 55-87.
- Linder, P., Elfving, B. and Zackrisson, O., 1997. Stand structure and successional trends in virgin boreal forest reserves in Sweden. *Forest Ecology and Management* 98: 17-33.
- Linares, G.W., Gastelu, V.D. and Zurita, E.G., 1997. Microenvironment and floristic of different edges in a fragmented Tropical Rainforest. *Conservation biology* 12(5): 1091-1102.
- Major, J., 1988. Endemism a botanical perspective. In: Myers, A.A and P.S. Giller (eds.) *Analytical Biogeography, An integrated Approach to the study of Animal and Plant Distributions*. Chapman & Hall, London.
- Mast, J.N. and Veblen, T.T., 1999. Tree spatial patterns and stand development along the pine grassland ecotones in the Colorado Front Range. *Canadian Journal of Forest Research* 29: 575-584.
- Matthew, D., Potts, A.R., Kassim, M.N.N., Supardi, S. and Bossert, W.H., 2005. Sampling tree diversity in Malaysian tropical forest an evaluation of a pre-felling inventory. *Forest Ecology and Management* 205: 385-395.

- Negi, B.S., Chauhan, D.S. and Todaria, N.P., 2008. Inventory of species of Panchayat forest and adjoining Reserve forest in three districts of Garhwal Himalaya, India. *Tropical Ecology* 49(2): 121-129.
- Padalia, H., Chauhan, N. and Porwal, M.C., 2004. Phytosociological observations on tree species diversity of Andaman Islands, India. *Current Science* 87: 799-806.
- Patel, D.M., 2002. Eco-Floristic and Ethnomedical Study of Taranga Forest, North Gujarat. A Ph.D thesis submitted to Hemchandracharya North Gujarat University, North Gujarat, Gujarat, India. 297.
- Phillips, O.L., Martinez, R.V. and Vargas, P.N., 2003. Efficient plot-based floristic assessment of tropical forests. *Tropical Ecology* 19: 629-645.
- Pullaiah. T. and Ali Mouali, D., 1997. Flora of Andhra Pradesh (India) Vol II. Scientific Publishers Jodhpur, India. 464-921.
- Pullaiah. T. and Chennaiah, E., 1997. Flora of Andhra Pradesh (India) Vol I. Scientific Publishers Jodhpur, India. 1-463.
- Pullaiah. T., 1997. Flora of Andhra Pradesh (India) Vol III. Scientific Publishers Jodhpur, India. 922-1349.
- Rai, R., 2002. Floristic Study of Bhiloda-Shamlaji Area with its Ethnobotany. A Thesis submitted to Hemchandracharya North Gujarat University. 237.
- Rajendra kumar, S., 2010. Floristic Status and its conservation in the forest of North Guajrat Region (NGR), Gujarat, India. A Ph.D thesis submitted to Bharathidasan University, Tiruchirappalli, Tamil Nadu. 195.
- Rajendra Kumar, S., Joshi, P.N., Joshua, J., Sunderraj, S.F.W., Kalavathy, S. and Ragunathan, P., 2011. Importance and conservation values of disturbed lands of the North Gujarat Region (NGR), Gujarat, India. *Plant Sciences Feed* 1(8): 121-141.
- Risser, P. and Rice, E.L., 1971. Diversity in tree species in Oklahoma upland forest. *Ecology* 52: 876-880.
- Sagar, R., Raghubanshi, A.S. and Singh, J.S., 2003. Tree species composition, dispersion and diversity along a disturbance gradient in a dry tropical forest region of India. *Forest Ecology and Management* 186: 61-71.
- Singh, S., 2003. Floristic and ecological studies on understorey herbaceous vegetation in Central Himalayan forest. *Annals of Forestry* 11(2): 166-174.
- Sirois, L. and Payette, S., 1991. Reduced postfire tree regeneration along a boreal forest-tundra transect in northern Quebec. *Ecology* 72: 619-318.
- Strok, N.E. and Samways, M.J., 1995. Inventorying and monitoring. Pp 453-543. In: *Global biodiversity assessment*, Heywood, V.H. and Watson, R.T., (eds.) Cambridge: Cambridge University Press. London.
- Tilman, D., Knops, J., Wedin, D., Reich, P., Ritchie, M. and Siemann, E., 1997. The influence of functional diversity and composition on ecosystem processes. *Science* 277: 1300–1302.
- Turner, I.M., Tan, H.T.W., Wee, Y.C., Ibrahim, A.B., Chew, P.T. and Corlett, R.T., 1994. A Study of plant species extinction in Singapore: Lessons for the conservation of Tropical Biodiversity. *Conservation Biology* 8(3): 705-712.
- Vazquez, J.A. and Givnish, T.J., 1998. Altitudinal gradients in tropical forest composition structure, and diversity in the Sierra de Manantlan. *Ecology* 86: 999-1020.
- Vitousek, D.M. and Reiners, W.A., 1975. Ecosystem succession and nutrient retention: A hypothesis *biosciences* 25: 370-380.
- Vyas, L.N., 1965. Vegetation of Parashuram hills and its Neighbourhood. *The Journal of Indian Botanical Society* 154(2): 149-162.
- West brooks, R., 1991. Plant protection issues-I. A commentary on new weeds in the united state weed technology 5: 232-237.



- Whittaker, R. and Niering, W.A., 1965. Vegetation of the Santa Catalina Mountains, Arizona: A gradient analysis of the south slope. Ecology 46: 429-452
- Yadav, P.S. and Singh, J.S., 1977. Progress in Ecology Vol II, Grassland Vegetation. Its Structure, Function, Utilisation and Management. Today and Tomorrow Printers and Publishers, New Delhi.

**Annexure 1: List of plant species recorded in Papagini river basin**

S.No	Species Name	Local Name	Habit
1	Acanthaceae		
1	<i>Asystasia gangetica</i> (L.) T.	Podabeera	Herb
2	<i>Barleria cuspidata</i> Heyne ex Nees	Disermbara	Shrub
3	<i>Barleria noctiflora</i> L. f.	Nagagorinta	Shrub
4	<i>Barleria prionitis</i> L.	Mullugorinta	Under Shrub
5	<i>Blepharis maderaspatensis</i> (L.) Hyne ex Roth	Anthrintapulu	Herb
6	<i>Blepharis repans</i> (Vahl) Roth,	Chinnaantrintapulu	Herb
7	<i>Dicliptera verticillata</i> (Forssk.) Christensen	0	Herb
8	<i>Dipteracanthus patulus</i> (Jacq.) Nees	0	Under Shrub
9	<i>Dipteracanthus prostratus</i> (Poir.) Nees	Nela Neelambaramu	Under Shrub
10	<i>Elytraria acaulis</i> (L. f.) Lindau	Yeddu-adugu	Herb
11	<i>Indoneesiella echioids</i> (L.) Sreemadh.	Akupootha	Herb
12	<i>Indoneesiella longepedunculata</i> (Sreemadh.) Sreemadh	0	Herb
13	<i>Justicia adhatoda</i> L.	Addasaramu	Shrub
14	<i>Lepidagathis cristata</i> Willd.	Mullabanti	Herb
15	<i>Lepidagathis incurva</i> Buch.-Ham.	0	Herb
16	<i>Lepidagathis mitis</i> Dalz.	0	Herb
17	<i>Peristrophe paniculata</i> (Forssk.) Brummitt	Chebura	Herb
18	<i>Rostellularia diffusa</i> (Willd.) Nees. var. <i>diffusa</i>	0	Herb
19	<i>Rostellularia procumbens</i> (L.) Nees	0	Herb
20	<i>Rostellularia prostrata</i> (Roxb. Ex C.B. Clarke) R.B. Majumadar	0	Herb
21	<i>Rostellularia simplex</i> Wight,	0	Herb
22	<i>Rostellularia vahlii</i> (Roth) Nees var. <i>vahlii</i> .	0	Straggling Herb
23	<i>Rungia repens</i> (L.) Nees	Palakavelli	Herb
2	Agavaceae		
24	<i>Agave americana</i> L.	Kittanara	Herb
25	<i>Agave angustifolia</i> Haw.	0	Herb

26	<i>Agave cantula</i> Roxb.	Kalabanda	Herb
3	Aizoaceae		
27	<i>Trianthema protulacastrum</i> L.	Gajerugodda	Herb
28	<i>Trianthema triquetra</i> Rottl. ex Willd.	Kukka Polakuri	Herb
4	Alangiaceae		
29	<i>Alangium salvifolium</i> (L. f.) Wangerin subsp. <i>Salvifolium</i>	Udaga chitt, Ankolamu	Shrub
5	Amaranthaceae		
30	<i>Achyranthes aspera</i> L. var. <i>argentea</i> (Thw.) Hook. f.	Uttarens	Herb
31	<i>Achyranthes aspera</i> L. var. <i>aspera</i>	Uttareni	Herb
32	<i>Aerva lanata</i> (L.) Juss.	Telaga pindi konda	Herb
33	<i>Aerva sanguinolenta</i> (L.) Blume	Pindi Chettu	Herb
34	<i>Allmania nodiflora</i> (L.) R. Br. Ex Wight var. <i>aspera</i> (Heyne ex Roth) Hook. f.	Errabaddi Aku	Herb
35	<i>Alternanthera pungens</i> Kunth	Mullu Ponnaganti	Herb
36	<i>Alternanthera sessilis</i> (L.) R. ex DC.	Poona gantikura	Herb
37	<i>Amaranthus spinosus</i> L.	Mulluthota kura	Herb
38	<i>Amaranthus tricolor</i> L.	Perugu thotakura	Herb
39	<i>Amaranthus viridis</i> L.	Chilakathota kura	Herb
40	<i>Celosia argentea</i> L. var. <i>argentea</i>	Gurugu aku	Herb
41	<i>Celosia argentea</i> L. var. <i>cristata</i>	Kodijuttu chettu	Herb
42	<i>Digera muricata</i> (L.) Mart.	Chenchali kura	Herb
43	<i>Gomphrena globosa</i> L.	Erra pagada banti, Rudrakshi, Bandumalli	Herb
44	<i>Gomphrena serrata</i> L.	Tella pagada banthi	Herb
45	<i>Pupalia lappacea</i> (L.) Juss. var. <i>lappacea</i>	Erra Uttareni, Tella Uttareni	Herb
46	<i>Trichurus monsoniae</i> (L. f.) C. Towns.	0	Spreading Herb
6	Amaryllidaceae		
47	<i>Crinum asiaticum</i> L.	Chengalva	Herb
48	<i>Crinum defixum</i> Ker-Gawl	0	Herb
49	<i>Crinum latifolium</i> L.	0	Herb
7	Anacardiaceae		
50	<i>Lannea coromandelica</i> (Houtt.) Merr.	Gumpina	Tree
51	<i>Mangifera indica</i> L.	Mamidi	Tree
52	<i>Rhus mysorensis</i> G. Don	Sunnarapuchettu	Small Tree
8	Annonaceae		
53	<i>Annona squamosa</i> L.	Seethaphalamu	Small Tree

54	<i>Milusa tomentosa</i> (Roxb.) J. Sinclair	Barre duduga, Pedda chilka duduga	Tree
55	<i>Milusa montana</i> Gardn. Ex Hook. f. & Thoms	0	Shrub
56	<i>Polyalthia longifolia</i> (Sonnerat) Thw.	Ashoka	Tree
9	Apocynaceae		
57	<i>Alstona scholaris</i> (L.) R. Br.	Edakulapala	Tree
58	<i>Carissa carandas</i> L.	Peddavakakaya	Shrub
59	<i>Carissa spinarum</i> L.	Kalivi	Shrub
60	<i>Cascabela thevitia</i> (L.) Lippold	Pachha ganneru	Shrub
61	<i>Catharanthus pusillus</i> (Murr.) G. Don	Erri-mirapa	Herb
62	<i>Catharanthus roseus</i> (L.) G. Don	Billaganneru	Herb
63	<i>Nerium indicum</i> Mill.	Ganneru	Shrub
64	<i>Wrightia tinctoria</i> (Roxb.) R. Br.	Palavareni	Tree
10	Arecaceae		
65	<i>Borassus flabellifer</i> L.	Thadi	Tree
66	<i>Cocus nucifera</i> L.	Kobbari	Tree
67	<i>Phoenix robusta</i> (Becc.) Becc. & Hook. f.	0	Tree
68	<i>Phoenix sylvestris</i> (L.) Roxb.	Chittieetha	Tree
11	Aristolochiaceae		
69	<i>Aristolochia bracteolata</i> Lam.	Gadidagadapa	Herb
70	<i>Aristolochia indica</i> L.	Nalla Eswari	Twining Shrub
12	Asclepiadaceae		
71	<i>Calotropis gigantea</i> (L.) R. Br.	Tella Gilledu	Shrub
72	<i>Calotropis procera</i> (Ait.) R.Br.	Jilledu	Shrub
73	<i>Caralluma adscendens</i> (Roxb.) Haw. var. <i>attenuate</i>	Kundellu Kommulu	Herb
74	<i>Caralluma umbellata</i> Haw.	Kundelukommulu	Herb
75	<i>Ceropegia bulbosa</i> Roxb.	Linga Tai	Herb
76	<i>Ceropegia juncea</i> Roxb.	Bella Badda	Herb
77	<i>Cryptolepis buchananii</i> Roem. & Schult.	Adavi pala teega	Twining Shrub
78	<i>Cryptostegia grandiflora</i> R. Br.	Pamu teega	Straggling Shrub
79	<i>Hemidesmus indicus</i> (L.) R. var. <i>indicus</i> .	Sugandhapala, Sarasaparilla, Nannari	Twining Shrub
80	<i>Hemidesmus indicus</i> (L.) R. var. <i>pubescens</i> (Wight & Arn.) Hook. f.	Sugandi	Twining Shrub
81	<i>Leptadenia reticulata</i> (Retz.) Wight &	Guttiapala	Twining

	Arn.		Shrub
82	<i>Oxystelma esculentum</i> (L. f.) R. Br. ex Schultes	0	Twiner
83	<i>Pentatropis capensis</i> (L.f) Bull.	Poolapala	Climbing Herb
84	<i>Pergularia daemia</i> (Forssk.) Chiov.	Dushtaputeega	Twining Shrub
85	<i>Wattakaka volubilis</i> (L. f.) Stapf	Bondi guriginja	Woody twiner
13	Asteraceae		
86	<i>Acanthospermum hispidum</i> DC.	Sanna Palleru	Herb
87	<i>Bidens bipinnata</i> L.	0	Herb
88	<i>Blainvillea acmella</i> (L.) Philipson	0	Herb
89	<i>Blumea bifoliata</i> (L.) DC.	0	Herb
90	<i>Blumea mollis</i> (D. Don) Merr.	0	Herb
91	<i>Dicoma tomentosa</i> Cass.	Navanangi	Herb
92	<i>Eclipta prostrata</i> (L.) L.	Guntagalagara	Herb
93	<i>Glossocardia bosvallea</i> (L. f.) DC.	Nabhi	Herb
94	<i>Gnaphalium polycaulon</i> Pers.	Parapalammu	Herb
95	<i>Helianthus annuus</i> L.	Sun flower	Herb
96	<i>Laggera mollis</i> Cav.	0	Herb
97	<i>Launaea procumbens</i> (Roxb.) Ramayya & Rajagobal	0	Herb
98	<i>Oligochaeta ramosa</i> (Roxb.) Wagenitz	0	Herb
99	<i>Parthenium hysterophorus</i> L.	Vayvaribhama	Herb
100	<i>Pluchea tomentosa</i>	0	Shrub
101	<i>Pulicaria wightiana</i>	Adaviyradhuthulladu	Herb
102	<i>Sphaeranthus indicus</i> L.	Bodasaramu	Herb
103	<i>Tridax procumbens</i> L.	Gaddichamanthi	Herb
104	<i>Vernonia cinerea</i> (L.) Less.	Garitakammi	Herb
105	<i>Xanthium strumarium</i> L.	Marulamathangi	Herb
14	Balanitaceae		
106	<i>Balanites aegyptiaca</i> (L.) Del.	Gara	Small tree
15	Bignoniaceae		
107	<i>Dolichandrone atrovirens</i> (Roth) Sprague	Vadi	Tree
108	<i>Dolichandrone falcata</i> (Wall. Ex DC.) Seem.	Chinnavadi	Tree
109	<i>Jacaranda mimosaeifolia</i> D. Don	0	Tree
110	<i>Tecoma stans</i> (L.) Kunth	Pasupu ganneru, Pachapoolu	Shrub
111	<i>Tecomella undulata</i> (Sm.) Seem.	Rohida	Shrub

16	Bombacaceae		
112	<i>Bombax ceiba</i> L.	Buruga	Tree
113	<i>Ceiba pentandra</i> (L.) Gaertn.	Buruga	Tree
17	Boraginaceae		
114	<i>Coldenia procumbens</i> L.	Bokkinaku, Hamsapadu	Herb
115	<i>Heliotropium ovalifolium</i> Forssk.	Bugudanti	Herb
116	<i>Heliotropium supinum</i> L.	0	Herb
117	<i>Trichodesma indicum</i> (L.) R.Br.	Nela Nakshatrah	Herb
118	<i>Trichodesma sedgwickianum</i> S.P. Banerjee	0	Herb
119	<i>Trichodesma zeylanica</i> (Brum. f.) R. Br.	Pedda Nela Nakshatralu	Herb
18	Cactaceae		
120	<i>Opuntia stricta</i> (Haw.) Haw. var. <i>dillenii</i> (Ker-Gawl.) Benson in Cact. & Succ.	Zemudu	Shrub
19	Caesalpiaceae		
121	<i>Bauhinia purpurea</i> L.	Deva Kanchanam	Tree
122	<i>Bauhinia racemosa</i> Lam.	Arechettu	Tree
123	<i>Bauhinia variegata</i> L.	Mandari	Tree
124	<i>Caesalpinia crista</i> L.	Gachaka	Climbing Shrub
125	<i>Caesalpinia pulcherrima</i> (L.) Swartz.	Rathnaganan	Shrub
126	<i>Cassia auriculata</i> L.	Tangedu	Shrub
127	<i>Cassia fistula</i> L.	Rela	Tree
128	<i>Cassia italica</i> (Mill.) Lam. ex Andrews	Nelathangedu	Herb
129	<i>Cassia mimosoides</i> L.	Nela Ponna	Herb
130	<i>Cassia montana</i> Heyne ex Roth	Pagadi, Tangedu, Konda, Tangedu	Small tree
131	<i>Cassia occidentalis</i> L.	Kashindha	Under Shrub
132	<i>Cassia pumila</i> Lam.	Semathngedu, Eddhukommaku	Herb
133	<i>Cassia siamea</i> Lam.	Seematangedu	Tree
134	<i>Cassia tora</i> L.	Nela Tangedu	Herb
135	<i>Delonix elata</i> (L.) Gamble	Sinkiresichetta	Tree
136	<i>Delonix regia</i> (Boj. Ex Hook.) Rafin.	Angripoolu	Tree
137	<i>Parkinsonia aculeata</i> L.	Simathumma	Small Tree
138	<i>Peltophorum pterocarpum</i> (DC.) Backer ex Heyne	Kondachantha	Tree
139	<i>Tamarindus indica</i> L.	Chinta	Tree
20	Capparaceae		

140	<i>Cadaba fruticosa</i> (L.) Druce	Adamorinika, Vutharasi Chettu	Straggling Shrub
141	<i>Capparis sepiaria</i> L.	Nalla Uppi	Scandent Shrub
142	<i>Capparis zeylanica</i> L.	Adavinimma	Climbing Shrub
143	<i>Crateva magna</i> (Lour.) DC.	Uskia-man, Ulmidi	Tree
21	Caricaceae		
144	<i>Carica papaya</i> L.	Parinda, Boppaya	Tree
22	Caryophyllaceae		
145	<i>Polycarpaea corymbosa</i> (L.) Lam.	0	Herb
23	Casuarinaceae		
146	<i>Casuarina equisetifolia</i> Forst. & Forst. f.	Sarugudu	Tree
24	Celastraceae		
147	<i>Maytenus emarginata</i> (Willd.) Ding Hou	0	Shrub
148	<i>Maytenus heyneana</i> (Roth) Raju & Babu	Guttichippati	Shrub
149	<i>Maytenus hookeri</i> Loes.	0	Shrub
25	Chenopodiaceae		
150	<i>Chenopodium album</i> L.	Pappukura, Chakracarthis kura	Herb
26	Cleomaceae		
151	<i>Cleome gynandra</i> L.	Vaminta	Herb
152	<i>Cleome monophylla</i> L.	Gaddi Vaminta	Herb
153	<i>Cleome simplicifolia</i> (Camb.) Hook. f. & Thoms.	0	Herb
154	<i>Cleome visocsa</i> L.	Kukkavaminta	Herb
27	Combretaceae		
155	<i>Anogeissus latifolia</i> (Roxb. ex DC.) Wall. ex Guill. & Perr.	Chiru-manu, Elama	Tree
156	<i>Terminalia alata</i> Heyne ex Roth,	Nallamaddi, Inamaddi	Tree
157	<i>Terminalia arjuna</i> (Roxb. ex DC.) Waight & Arn.	Tellmaddi	Tree
158	<i>Terminalia bellirica</i> (Gaertn.) Roxb.	Tandra	Tree
159	<i>Terminalia catappa</i> L.	Badam	Small Tree
28	Commelinaceae		
160	<i>Commelina attenuata</i> J. Koenig ex Vahl	0	Herb
161	<i>Commelina benghalensis</i> L.	Yanadaku	Herb
162	<i>Commelina clavata</i> C. B. Clarke	0	Herb

163	<i>Commelina diffusa</i> Burm. f.	0	Herb
164	<i>Commelina erecta</i> L.	0	Herb
165	<i>Commelina hasskarlii</i> Clarke	0	Herb
166	<i>Commelina maculata</i> Edgew.	Kanjuna	Herb
167	<i>Cyanotis cristata</i> (L.) D. Don	Nethakina	Herb
168	<i>Cyanotis fasciculata</i> (Hwyne ex Roth) Schult. f.	0	Herb
169	<i>Cyanotis tuberosa</i> (Roxb.) Schult. & Schult. f.	0	Herb
170	<i>Tonningia axillaris</i> (L.) O. Kuntze	0	Herb
171	<i>Tonningia cucullata</i> (Roth) O. Kuntze	0	Herb
29	Convolvulaceae		
172	<i>Convolvulus arvensis</i> L.	0	Twining Herb
173	<i>Evolvulus alsinoides</i> (L.) L.	Vishnukranthamu	Prostrate Herb
174	<i>Evolvulus nummularius</i> (L.) L.	Chitieluka, Cheiaku	Slender Herb
175	<i>Ipomoea aquatica</i> Forssk.	Thootikoora	Twining Herb
176	<i>Ipomoea dichroa</i> (Roem. & Schult.) Choisy	0	Twining Herb
177	<i>Ipomoea eriocarpa</i> R. Br.	Purititeega	Twining Herb
178	<i>Ipomoea nil</i> (L.) Roth	Kallivittllu	Twiner
179	<i>Ipomoea obscura</i> (L.) Ker - Gawl.	0	Twining Herb
180	<i>Ipomoea pes-tigridis</i> L.	Mekamadugu	Twining Herb
181	<i>Merremia aegyptia</i> (L.) Urban	0	Twining Herb
182	<i>Merremia ganetica</i> (L.) Cuf.	Yelakajeevaku	Twining Herb
183	<i>Rivea hypocrateriformis</i> (Desr.) Choisy	Bodditeega	Twining Shrub
184	<i>Rivea ornata</i> Choisy	Peddabodditeega	Climbing Shrub
30	Cucurbitaceae		
185	<i>Citrullus colocynthis</i> (L.) Schrad.	Verri Puccha	Trailing Herb
186	<i>Citrullus lanatus</i> (Thum.) Mats. & Nakai	Pucchakaya	Trailing Herb
187	<i>Coccinia grandis</i> (L.) J. O. Voigt	Koki Donda, Dondateega	Prostrate Herb

188	<i>Corallocarpus epigaeus</i> (Rottl. & Willd.) C.B. Clarke & Hook. f.	Murudonda	Climbing Herb
189	<i>Ctenolepis garcinii</i> (Burm. f.) C.B. Clarke	Gudimurah	Climber
190	<i>Cucumis callosus</i> (Rottl.) Cong.	0	Climbing Herb
191	<i>Cucumis melo</i> L. var. <i>melo</i> sensu Chakravarty	Budama teega	Trailing Herb
192	<i>Cucumis satvis</i> L.	Dosa	Climber
193	<i>Cucurbita maxima</i> Duch. ex Lam.	Gummadi	Twining Herb
194	<i>Lageneria leucantha</i> (Duch.) Rusby.	0	Climber
195	<i>Luffa acutangula</i> (L.) Roxb.	Beera	Climber
196	<i>Luffa echiniata</i> Roxb.	0	Climber
197	<i>Momordica charantia</i> L.	Kakara	Climbing Herb
198	<i>Mukia maderaspatana</i> (L.) Roem.	0	Climber
199	<i>Trichosanthes cucumerina</i> L.	Potlakaya	Climber
31	Cyperaceae		
200	<i>Cyperus articulatus</i> L.	0	Sedge
201	<i>Cyperus bulbosus</i> Vahl	0	Sedge
202	<i>Cyperus compressus</i> L.	0	Sedge
203	<i>Cyperus difformis</i> L.	0	Sedge
204	<i>Cyperus rotundus</i> L.	Shakhatunga veru, Tunga	Sedge
205	<i>Fimbristylis falcata</i> (Vahl) Kunth	0	Sedge
206	<i>Fimbristylis ferruginea</i> (L.) Vahl	0	Sedge
207	<i>Juncellus alopecuroides</i> (Rottb.) Clarke in Hook. f.	0	Herb
208	<i>Juncellus pygmaeus</i> (Rottb.) Clarke in Hook. f.	0	Sedge
209	<i>Kyllinga bulbosa</i> Beauv.	0	Sedge
32	Dioscoreaceae		
210	<i>Dioscorea bulbifera</i> L. var. <i>bulbifera</i>	Adavidumpa	Twiner
211	<i>Diospyros chloroxylon</i> Roxb.	Illinda, Nala Illinda	Tree
33	Ebenaceae		
212	<i>Diospyros melanoxylon</i> Roxb.	Tumki	Tree
34	Ehretiaceae		
213	<i>Cordia dichotoma</i> Forst. f.	Bankiriki	Tree
214	<i>Cordia gharaf</i> (Forssk.) Ehrenb.	Chinnabotuku	Small Tree
215	<i>Ehretia laevis</i> Roxb.	Pogadithe	Tree
35	Elatinaceae		



216	<i>Bergia ammannioides</i> Roxb. ex Roth	0	Herb
217	<i>Bergia capensis</i> L.	0	Herb
36	Erythroxyloaceae		
218	<i>Erythroxyllum monogynum</i> Roxb.	Devadaru	Shrub
37	Euphorbiaceae		
219	<i>Acalypha ciliata</i> Forsk.	Tellamurupindi	Under Shrub
220	<i>Acalypha indica</i> L.	Muripinda, Kuppinta	Herb
221	<i>Acalypha lanceolata</i> Willd.	0	Herb
222	<i>Acalypha malabarica</i> Muell.-Arg.	0	Herb
223	<i>Croton bonplandianum</i> Baill.	Galivana chettu, Kukka mirapa	Under Shrub
224	<i>Croton klotzschianus</i> (Wt.) Thw.	Nelpalavemu	Shrub
225	<i>Euphorbia antiquorum</i> L.	Bommajemudu, Pedda jemudu	Small Tree
226	<i>Euphorbia caducifolia</i> Haines	Katte jemudu	Succulent Shrub
227	<i>Euphorbia heterophylla</i> L.	0	Herb
228	<i>Euphorbia heyneana</i> Spreng.	Alumu	Prostrate Herb
229	<i>Euphorbia hirta</i> L.	Reddyvari nanabalu	Herb
230	<i>Euphorbia ligularia</i> Roxb.	Aku-jemudu	Small Tree
231	<i>Euphorbia parviflora</i> L.	0	Herb
232	<i>Euphorbia rosea</i> Retz.	0	Prostrate Herb
233	<i>Euphorbia thymifolia</i> L.	Erra-chittipayalaku	Herb
234	<i>Euphorbia tirucalli</i> L.	Tirukalli	Succulent Shrub
235	<i>Givotia moluccana</i> (L.) Sreem.	Tella Punki	Tree
236	<i>Jatropha curcas</i> L.	Adavi amudam	Shrub
237	<i>Jatropha gossypifolia</i> L. var. <i>elegans</i> (Pohl) Muell.	Seema nepalamu	Shrub
238	<i>Jatropha gossypifolia</i> L. var. <i>gossypifolia</i>	Nepalam	Shrub
239	<i>Phyllanthus amarus</i> Schum. & Thonn.	Nela usiri	Herb
240	<i>Phyllanthus emblica</i> L.	Pedda Usirika	Tree
241	<i>Phyllanthus maderaspatensis</i> L.	Nalla Usirika	Herb
242	<i>Phyllanthus reticulatus</i> Poir.	Nalla Purugudu	Shrub
243	<i>Phyllanthus virgatus</i> Forst. f.	Uchchi usirika	Herb
244	<i>Ricinus communis</i> L.	Amudam	Shrub
245	<i>Securinega leucopyrus</i> (Willd.) Muell. - Arg.	Tella purugudu	Shrub
246	<i>Securinega virosa</i> (Roxb. ex Willd.)	Sulamunata	Shrub

	Baillon		
38	Fabaceae		
247	<i>Abrus precatorius</i> L	Guruginja, Guruveda	Twiner
248	<i>Alysicarpus hamosus</i> Edgew.	0	Herb
249	<i>Alysicarpus longifolius</i> (Rottl. ex Spreng.) Wight & Arn.	Peddakandikarku	Herb
250	<i>Alysicarpus monilifer</i> (L.) DC.	Amera	Herb
251	<i>Alysicarpus vaginalis</i> (L.) DC.	Baramthaluchath	Herb
252	<i>Arachis hypogaea</i> L.	Verusanaga	Herb
253	<i>Butea monosperma</i> (Lam.) Taub.	Modugu	Tree
254	<i>Cajanus cajan</i> (L.) Millsp.	Kandi, Kandulu	Shrub
255	<i>Canavalia gladiata</i> (Jacq.) DC.	Thammakaya	Twining Shrub
256	<i>Clitoria ternatea</i> L.	Sankupoolu	Twining Herb
257	<i>Crotalaria medicaginea</i> Lam. var <i>medicaginea</i> Munk	0	Herb
258	<i>Crotalaria medicaginea</i> Lam. var <i>neglecta</i> (Wight & Arn.) Baker in Hook. f.	0	Herb
259	<i>Dalbergia latifolia</i> Roxb.	Jittegi, Chittegi	Tree
260	<i>Dalbergia paniculata</i> Roxb.	Patsaru	Tree
261	<i>Dalbergia sissoo</i> Roxb.	Sissoo	Tree
262	<i>Desmodium triflorum</i> (L.) DC.	Manthamandu	Herb
263	<i>Erythrina suberosa</i> Roxb.	Mulu moduga	Small Tree
264	<i>Galactia tenuiflora</i> (Klein ex Willd.) Wight & Arn.	0	Slender Climber
265	<i>Goniogyna hirta</i> (Willd.) Ali	0	Herb
266	<i>Indigofera cordifolia</i> Heyne ex Roth	0	Herb
267	<i>Indigofera linifolia</i> (L. F.) Retz. var. <i>campbellii</i> Weight & Baker	0	Herb
268	<i>Indigofera linifolia</i> (L. F.) Retz. var. <i>linifolia</i>	0	Herb
269	<i>Indigofera linnaei</i> Ali	Chalapachi	Herb
270	<i>Indigofera tinctoria</i> L.	Avuri	Under Shrub
271	<i>Pongamia pinnata</i> (L.) Pierre	Karanj	Tree
272	<i>Pterocarpus marsupium</i> Roxb.	Yegisa, Yegi	Tree
273	<i>Rhynchosia minima</i> (L.) DC.	Gaddichikkdu	Twining Herb
274	<i>Rhynchosia rothii</i> Benth.	0	Climbing Shrub

275	<i>Sesbania bispinosa</i> (Jacq.) W.F. Wight	Arrankigaddi	Shrub
276	<i>Sesbania sesban</i> (L.) Merrill	Jain, Ekad	Shrub
277	<i>Stylosanthes fruticosa</i> (Retz.) Alston	0	Under Shrub
278	<i>Tephrosia purpurea</i> (L.) Pers.	Uempali	Herb
279	<i>Tephrosia strigosa</i> (Dalz.) Sant. & Mahesh.	0	Spreading Herb
280	<i>Tephrosia villosa</i> (L.) Pers.	Nuguvempali	Under Shrub
281	<i>Termnus labialis</i> (L.f.) Spreng.	Mashaparni	Twining Herb
282	<i>Vigna radiata</i> (L.) Wilczek <i>radiata</i>	Pesalu	Herb
283	<i>Vigna radiata</i> (L.) Wilczek subsp. <i>sublobata</i> (Roxb.) Verdc.	0	Herb
284	<i>Vigna trilobata</i> (L.) Verd.	Pilli Pesara	Twining Herb
285	<i>Vinga unguiculata</i> (L.) Walp.	Alasandalu	Twining Herb
286	<i>Zornia diphylla</i> (L.) Pers.	0	Herb
287	<i>Zornia gibbosa</i> Span.	Uhunnali	Herb
39	Flacourtiaceae		
288	<i>Casearia elliptica</i> Willd.	Chilaka duddi	Small Tree
40	Flindersiaceae		
289	<i>Chloroxylon swietenia</i> DC.	Billu, Billudu	Small Tree
41	Gentianaceae		
290	<i>Enicostema axillare</i> (Lam.) Raynal	Nelagolli, Midi, Nelagurudu	Herb
42	Hernandiaceae		
291	<i>Gyrocarpus americanus</i> Jacq.	0	Tree
43	Hydrocharitaceae		
292	<i>Hydrilla verticillata</i> (L. f.) Royle	0	Aquatic Herb
44	Hypoxidaceae		
293	<i>Curculigo orchioides</i> Gaertn.	Nelathati	Herb
45	Lamiaceae		
294	<i>Anisomeles indica</i> (L.) O. Kuntze	Ababeera	Herb
295	<i>Anisomeles malabarica</i> (L.) R. Br. ex Sims	Magabeera	Shrub
296	<i>Hyptis sauveolens</i> (L.) Point.	Simathulasi	Herb
297	<i>Leonotis nepetiifolia</i> (L.) R. Br.	0	Herb
298	<i>Leucas aspera</i> (Willd.) Link	Thummi	Herb
299	<i>Leucas biflora</i> (Vahl) R. Br.	Gobbi	Herb
300	<i>Leucas martinicensis</i> (Jacq.) R.	Peddathummi	Herb
301	<i>Leucas stricta</i> Benth.	0	Herb
302	<i>Leucas urticaefolia</i> (Vahl) R. Br.	0	Herb

303	<i>Ocimum americanum</i> L.	Kukkathulasi	Herb
304	<i>Ocimum basilicum</i> L. var. <i>basilicum</i>	Buthulasi	Herb
305	<i>Ocimum gratissium</i> L.	Nimmathulasi	Shrub
306	<i>Ocimum tenuiflorum</i> L.	Thulasi	Shrub
307	<i>Orthosiphon rubicundus</i> (D. Don) Benth. <i>rubicundus</i>	Nela Thappidi	Herb
308	<i>Pogostemon myosuroides</i> (Roth) El Gazzar & L. Watson	Ratisarugudu	Herb
46	Liliaceae		
309	<i>Allium cepa</i> L.	Erragadda	Herb
310	<i>Aloe vera</i> (L.) Burm.	Kalabanda	Herb
311	<i>Asparagus racemosus</i> Willd.	Pilli Teegalu	Under Shrub
312	<i>Chlorophytum tuberosum</i> (Roxb.) Baker	Safedmusli	Herb
313	<i>Dipcadi erythraeum</i> Webbl. & Berth.	0	Herb
314	<i>Dipcadi montanum</i> (Dalz.) Baker.	0	Herb
315	<i>Gloriosa superba</i> L.	0	Herb
316	<i>Scilla hyacinthina</i> (Roth) Macbr.	Adiviulli	Herb
47	Loranthaceae		
317	<i>Dendrophthoe falcata</i> (L. f.) Ettingsh.	Badanika chettu, Bajinika, Jiddu, Yelinga	Parasite
48	Lythraceae		
318	<i>Ammannia baccifera</i> L.	Agni Vendrapaku	Herb
319	<i>Lawsonia inermis</i> L.	Gorinta	Shrub
49	Magnoliaceae		
320	<i>Michelia champaca</i> L.	Sampenga, Champakamu	Tree
50	Malvaceae		
321	<i>Abelmoschus esculentus</i> (L.) Monench.	Benda	Under Shrub
322	<i>Abutilon hirtum</i> (Lam.) Sweet,	Palabenda	Under Shrub
323	<i>Abutilon indicum</i> (L.) Sweet subsp. <i>indicum</i>	Thuthuru benda, Erribenda	Under Shrub
324	<i>Gossypium hirsutum</i> L.	0	Under Shrub
325	<i>Hibiscus lobatus</i> (Murr.) O. Kuntze,	Teliabenda	Herb
326	<i>Hibiscus ovalifolius</i> (Forssk.) Vahl,	Nityamalli	Under Shrub
327	<i>Hibiscus rosa-sinensis</i> L.	Mandara	Shrub
328	<i>Hibiscus trionum</i> L.	0	Herb
329	<i>Malvastrum coromandelianum</i> (L.) Garcke	0	Under Shrub
330	<i>Pavonia ceratocarpa</i> Mast.	0	Herb
331	<i>Pavonia zeylanica</i> (L.) Cav.	Karubenda	Herb
332	<i>Sida acuta</i> Burm. f.	Nela boddi	Under Shrub

333	<i>Sida cordata</i> (Burm. f.) Borssum	Gayapuaku	Under Shrub
334	<i>Sida cordifolia</i> L.	Chirubenda	Under Shrub
335	<i>Sida ovata</i> Forsk.	Medabirucaku	Under Shrub
336	<i>Sida rhombifolia</i> L.	Athibola	Herb
337	<i>Thespesia populnea</i> (L.) Soland. & Corr.	Gangaravi	Small Tree
51	Meliaceae		
338	<i>Azadirachata indica</i> A. Juss.	Neem	Tree
339	<i>Melia azedarach</i> L.	Turaka vepa	Tree
52	Menispermaceae		
340	<i>Cissampelos pareira</i> L. var. <i>hirsuta</i> (Buch.- Ham. ex DC.) Forman	Adavi banka teega	Twiner
341	<i>Cocculus hirsutus</i> (L.) Diels	Dusaraputiga	Climbing Shrub
342	<i>Cocculus pendulus</i> (J. R. & G. Forst.) Diels	0	Climbing Shrub
343	<i>Tinospora cordifolia</i> (Willd.) Miers	Tippa teega	Woody Climber
53	Mimosaceae		
344	<i>Acacia auriculiformis</i> Cunn. ex Benth.	Australiathunna	Tree
345	<i>Acacia caesia</i> (L.) Willd.	Yerra cheek	Shrub
346	<i>Acacia catechu</i> (L. f.) Willd.	Katha, Kath, Khair	Tree
347	<i>Acacia chundra</i> (Roxb. ex Rottler.) Willd.	Sandra	Tree
348	<i>Acacia leucophloea</i> (Roxb.) Willd.	Tellatumma	Tree
349	<i>Acacia nilotica</i> (L.) Willd. ex Del. subsp. <i>indica</i>	Nallatumma	Tree
350	<i>Acacia raddiana</i> Savi	0	Tree
351	<i>Acacia senegal</i> (L.) Willd.	0	Tree
352	<i>Acacia sinuta</i> (Lour.) Merr.	Shikakai	Climbing shrub
353	<i>Acacia torta</i> (Roxb.) Craib	0	Shrub
354	<i>Albizia amara</i> (Roxb.) Boivin	Sigara	Tree
355	<i>Albizia lebbek</i> (L.) Benth.	Baagi, Dirisena	Tree
356	<i>Albizia odoratissima</i> (L. f.) Benth. var <i>odoratissima</i>	Konda Sigara	Tree
357	<i>Albizia procera</i> (Roxb.) Benth.	Tella chinduga	Tree
358	<i>Dichrostachys cinerea</i> (L.) wight & Arn.	Velthuru	Shrub
359	<i>Leucaena leucocephala</i> (Lam.) De Wit	0	Shrub
360	<i>Mimosa hamata</i> Willd.	0	Shrub
361	<i>Pithecellobium dulce</i> (Roxb.) Benth.	Seemachirtha	Tree

362	<i>Prosopis chilensis</i> (Molina) Stuntz	Seemathumma	Small Tree
54	Molluginaceae		
363	<i>Glinus lotoides</i> L.	0	Herb
364	<i>Glinus oppositifolius</i> (L.) DC.	0	Herb
365	<i>Molluga nudicaulis</i> Lam.	0	Herb
366	<i>Molluga pentaphylla</i> L.	Pichichatraku	Herb
55	Moraceae		
367	<i>Ficus amplissima</i> Smith	Pedda Juvi	Tree
368	<i>Ficus benghalensis</i> L.	Marri, Pedda marri	Tree
369	<i>Ficus microcarpa</i> L. f.	Juvi, Konda Juvi, Verra-Juvi	Tree
370	<i>Ficus mollis</i> Vahl	Jivi, Kal-Juvi	Tree
371	<i>Ficus racemosa</i> L.	Medi, Atti	Tree
372	<i>Ficus religiosa</i> L.	Ravi, Ragi	Tree
56	Moringaceae		
373	<i>Moringa concanensis</i> Nimmo ex Dalz. & Gibs.	Konda Munaga	Tree
374	<i>Moringa pterigosperma</i> Gaertn.	Munaga, Mulaga	Tree
57	Musaceae		
375	<i>Musa paradisiaca</i> L.	Arali	Herb
58	Myrtaceae		
376	<i>Callistemon viminalis</i> Cheel	Bottle Brush	Tree
377	<i>Eucalyptus globulus</i> Labill.	Nilgiri	Tree
378	<i>Psidium guajava</i> L.	Jama	Small Tree
379	<i>Syzygium cumini</i> (L.) Skeels	Neredu	Tree
59	Nyctaginaceae		
380	<i>Boerhavia diffusa</i> L.	Atikamamidi	Herb
381	<i>Bougainvillea glabra</i> Choisy	Kagitham Poolu	Climber
382	<i>Bougainvillea spectabilis</i> Willd.	Kagitham Poolu	Climber
383	<i>Commicarpus chinensis</i> (L.) Heimerl	Teega Atikamamidi	Herb
384	<i>Commicarpus verticillatus</i> (Poir.) Standl.	0	Herb
60	Nymphaeaceae		
385	<i>Nymphaea pubescens</i> Willd.	Kalva	Aquatic Herb
61	Oleaceae		
386	<i>Jasminum angustifolium</i> Vahl.	Adavimalle, Srimalle, Lingamalle	Climbing Shrub
387	<i>Jasminum grandiflorum</i> L.	Chameli	Climbing Shrub
388	<i>Jasminum multiflorum</i> (Burm. f.) Andrews	Malle	Shrub
62	Onagraceae		

389	<i>Ludwigia perennis</i> L.	Lavagakayamokka	Herb
63	Oxalidaceae		
390	<i>Oxalis corniculata</i> L.	Poli Chintaku	Herb
64	Papaveraceae		
391	<i>Argemone mexicana</i> L.	Yerrickusuma	Herb
65	Passifloraceae		
392	<i>Passiflora foetida</i> L.	Tella Jumiki	Twiner
66	Pedaliaceae		
393	<i>Martynia annua</i> L.	0	Herb
394	<i>Pedaliium murex</i> L.	Gnugupalluru, Peddapalleru	Herb
67	Ploygonaceae		
395	<i>Antigonon leptopus</i> Hook. & Arn.	Teegarosa	Climbing Shrub
68	Plumbaginaceae		
396	<i>Plumbago zylanica</i> L.	Jigurumokka	Herb
69	Poaceae		
397	<i>Acrachne racemosa</i> (Heyne ex Roem & Schult. ) Ohwi	0	Grass
398	<i>Alloteropsis cimicina</i> (L.) Stspf	0	Grass
399	<i>Apluda mutica</i> L.	0	Grass
400	<i>Aristida adscensionis</i> L. var. <i>adscensionis</i>	Paraka Gaddi	Grass
401	<i>Aristida funiculata</i> Trin.& Rupr. var. <i>funiculata</i>	0	Grass
402	<i>Aristida hystrix</i> L.f.	Dollubagaddi	Grass
403	<i>Brachiaria distachya</i> (L.) Stapf.	Koranna gaddi	Grass
404	<i>Brachiaria ramosa</i> (L.) Stapf	Eduru gaddi	Grass
405	<i>Brachiaria reptans</i> (L.) C. Gardner & C. E. Hubbard	0	Grass
406	<i>Cenchrus biflorus</i> Roxb.	0	Grass
407	<i>Cenchrus ciliaris</i> L.	Bunch Grass	Grass
408	<i>Cenchrus setigerus</i> Vahl	0	Grass
409	<i>Chloris barbata</i> Sw.	Jadakuchulagaddi	Grass
410	<i>Chloris virgata</i> Sw.	0	Grass
411	<i>Chrysopogon fulvus</i> (Spreng.) Chiov.	Peddapala bogray gaddi	Grass
412	<i>Cymbopogon caesius</i> (Hook. & Arn.) Stapf	Kasigaddi	Grass
413	<i>Cymbopogon coloratus</i> (Hook. f.) Stapf	Boda gaddi	Grass
414	<i>Cymbopogon jwarancusa</i> (Jones) Schult.	0	Grass

415	<i>Cymbopogon martinii</i> (Roxb.) Watson	0	Grass
416	<i>Cymbopogon nardus</i> (L.) Rendle var. <i>confertiflorus</i> (Steud.) Stapf	Ganjini	Grass
417	<i>Cynodon barberi</i> Rang. & Tad.	Kasuru Sannaetia	Grass
418	<i>Cynodon dactylon</i> (L.) Pers.	Garika gaddi	Grass
419	<i>Dactyloctenium aegyptium</i> (L.) Willd.	Nela Ragi	Grass
420	<i>Dendrocalamus strictus</i> (Roxb.) Nees	Sandanpuredru	Shrub
421	<i>Dichanthium annulatum</i> (Forsk.) Stapf	0	Grass
422	<i>Dichanthium caricosum</i> (L.) A. Camus	0	Grass
423	<i>Dichanthium filiculme</i> (Hook. f.) Jain et Deshp.	0	Grass
424	<i>Dichanthium pertusum</i> (L.) Clayton	0	Grass
425	<i>Digitaria ciliaris</i> (Retz.) Koel.	0	Grass
426	<i>Digitaria longiflora</i> (Retz.) Pers.	0	Grass
427	<i>Diplachne fusa</i> (L.) Beauv.	0	Grass
428	<i>Echinochloa colona</i> (L.) Link	Aaddagaddi	Grass
429	<i>Echinochloa crusgalli</i> (L.) P. Baeuv.	Peddawindu	Grass
430	<i>Eleusine coracana</i> (L.) Gaertn.	Ragi	Grass
431	<i>Eleusine indica</i> (L.) Gaertn.	Thipparagi	Grass
432	<i>Eragrostis ciliaris</i> (L.) R. Br. var. <i>ciliaris</i>	0	Grass
433	<i>Eragrostis japonica</i> (Thunb.) Trin.	0	Grass
434	<i>Eragrostis minor</i> Host.	Goobbai gaddi	Grass
435	<i>Eragrostis tremula</i> (Lam.) Hochst. ex Steud.	0	Grass
436	<i>Eremopogon foveolatus</i> (Del.) Stapf.	Namalachetta	Grass
437	<i>Heteropogon contortus</i> (L.) P. Beauv. ex Roem. & Schult.	Kaserigaddi, Eddigaddi	Grass
438	<i>Melanocenchris jacquemontii</i> Jaub. & Spach.	0	Grass
439	<i>Oplismenus burmannii</i> (Retz.) P. Beauv.	0	Grass
440	<i>Oryza sativa</i> L.	Vadlu	Grass
441	<i>Panicum paludosm</i> Roxb.	0	Grass
442	<i>Panicum psilopodium</i> Trin.	0	Grass
443	<i>Paspalidium flavidum</i> (Retz.) Camus	Udagaddi	Grass
444	<i>Pennisetum americanum</i> (L.) Schum.	Sajjalu	Grass
445	<i>Perotis indica</i> (L.) O. Ktze.	0	Grass
446	<i>Phragmites karka</i> (Retz.) Trin. ex Steud. var. <i>karka</i>	Kulpagaddi	Grass
447	<i>Saccharum spontaneum</i> L.	Kans	Grass
448	<i>Setaria intermedia</i> Roem. & Schult.	Avisa	Grass



449	<i>Setaria italica</i> (L.) Beauv.	Korralu	Grass
450	<i>Setaria pumila</i> (Poir.) Roem. & Schult.	Nakkathoka gaddi	Grass
451	<i>Setaria verticillata</i> (L.) P. Beauv.	Chikelnta	Grass
452	<i>Sorghum bicolor</i> (L.) Moench.	Jawar, Jowar	Grass
453	<i>Sporobolus coromandelianus</i> (Retz.) Kunth	0	Grass
454	<i>Sporobolus indicus</i> (L.) R.Br. var <i>diander</i>	0	Grass
455	<i>Sporobolus maderaspatanus</i> Bor	0	Grass
456	<i>Sporobolus spicatus</i> (Vahl) Kunth	0	Grass
457	<i>Tetrapogon tenellus</i> (Koen. ex Roxb.) Chiov.	Eruvangaddi	Grass
458	<i>Themeda triandra</i> Forssk.	Kallakasuru	Grass
70	Polygalaceae		
459	<i>Polygala arvensis</i> Willd.	Khata	Herb
460	<i>Polygala chinensis</i> L.	Nelajanuma	Herb
461	<i>Polygala erioptera</i> DC.	0	Herb
462	<i>Polygala javana</i> DC.	0	Herb
71	Polygonaceae		
463	<i>Polygonum barbatum</i> L. var. <i>barbatum</i>	0	Herb
464	<i>Polygonum glabrum</i> Willd. var. <i>glabrum</i>	Buradagogu	Herb
465	<i>Polygonum plebeium</i> R. Br.	0	Herb
72	Portulacaceae		
466	<i>Portulaca oleracea</i> L. var. <i>linearifolia</i>	Pappukoora	Herb
467	<i>Portulaca oleracea</i> L. var. <i>oleracea</i>	Payalaku	Herb
468	<i>Portulaca pilosa</i> L. subsp. <i>pilosa</i>	0	Herb
469	<i>Portulaca quadrifida</i> L.	Sannapayalaku	Herb
73	Primulaceae		
470	<i>Anagallis arvensis</i> L.	0	Herb
74	Rhamnaceae		
471	<i>Ziziphus glabrata</i> Heyne ex Roth	Goti	Small Tree
472	<i>Ziziphus mauritiana</i> Lam. var. <i>fruticosa</i> (Haines) Sebasine & Balakr.	Regu	Shrub
473	<i>Ziziphus mauritiana</i> Lam. var. <i>mauritiana</i>	Erra regu	Tree
474	<i>Ziziphus nummularia</i> (Burm. f.) Wight & Arn.	Nela regu	Shrub
475	<i>Ziziphus oenoplia</i> (L.) Miller	Pariki Kampa	Straggling Shrub
476	<i>Ziziphus xylopyrus</i> (Retz.) Willd.	Gotti, Gotika	Straggling Shrub

75	Rubiaceae		
477	<i>Catunaregum spinosa</i> (Thunb.) Tirveng.	Manga	Shrub
478	<i>Hedyotis corymbosa</i> (L.) Lam.	0	Herb
479	<i>Hedyotis puberula</i> (G. Don) Arn.	Chiriveru	Herb
480	<i>Ixora arborea</i> Roxb. ex J. E. Sm	Korivi	Small Tree
481	<i>Ixora coccinea</i> L.	Tellaramabbanamu	Shrub
482	<i>Ixora undulata</i> Roxb.	0	Shrub
483	<i>Mitragyna parvifolia</i> (Roxb.) Korth.	Batta genupu	Tree
484	<i>Sparmacoce articularis</i> L.f.	Madanaku	Herb
485	<i>Sparmacoce pusilla</i> Wall.	Pasanuri	Herb
76	Rutaceae		
486	<i>Aegle marmelos</i> (L.) Corr.	Maredu	Tree
487	<i>Atalantia monophylla</i> (L.) Correa	Yerra Munukud	Tree
488	<i>Citrus limon</i> (L.) Burm. f.	Nimbu	Tree
489	<i>Citrus medica</i> L.	Nimbu	Tree
490	<i>Murraya koenigii</i> (L.) Spreng.	Karepaku, Karivepaku	Shrub
77	Salvadoraceae		
491	<i>Salvadora persica</i> L.	Waragu	Shrub
78	Santalaceae		
492	<i>Santalum album</i> L.	Chandanam, Srigandham, Harichandanam	Tree
79	Sapindaceae		
493	<i>Cardiospermum canescens</i> Wall.	Pedda, Pottuki Teega	Climbing Herb
494	<i>Cardiospermum halicacabum</i> L.	Buddakakara	Herb
495	<i>Dodonaea viscosa</i> (L.) Jacq.	Bandara, Bandaraku, Chettu	Shrub
496	<i>Sapindus emarginatus</i> Vahl	Kunkudu, Kookudu	Tree
80	Sapotaceae		
497	<i>Manilkara hexandra</i> (Roxb.) Dub.	Pala	Tree
498	<i>Manilkara sapota</i> (L.) P. Royen	Cheeku	Tree
81	Scrophulariaceae		
499	<i>Kickxia ramosissima</i> (Wall.) Janchen	0	Twining Herb
500	<i>Lindenbergia muraria</i> (Roxb. ex Don) P. Bruehl.	0	Herb
501	<i>Lindernia ciliata</i> (Colsm.) Pennell	0	Herb
502	<i>Striga angustifolia</i> (D. Don) Sald.	Ratibadanika	Herb
503	<i>Striga densiflora</i> (Benth.) Benth.	0	Herb

504	<i>Striga sulphurea</i> Dalz.	0	Herb
82	Simaroubaceae		
505	<i>Ailanthus excelsa</i> Roxb.	Peddamanu, Peddavera	Tree
83	Solanaceae		
506	<i>Capsicum annuum</i> L.	Chillies	Herb
507	<i>Capsicum frutescens</i> L.	Golkonda mirapa, Konda mirapa, Aggi mirapa	Shrub
508	<i>Datura innoxia</i> Mill.	Ummetta	Under Shrub
509	<i>Datura metel</i> L.	Ummetta, Nall ummetta	Under Shrub
510	<i>Lycopersicon esculentum</i> Mill.	Tomato	Herb
511	<i>Physalis minima</i> L.	Budama	Herb
512	<i>Solanum anguivi</i> Lam.	Mullavankaya	Under Shrub
513	<i>Solanum melongena</i> L.	Brinjal	Under Shrub
514	<i>Solanum melongena</i> L. var. <i>incanum</i> (L.) O. Kuntze.	Mullavankaya	Shrub
515	<i>Solanum pubescens</i> Wild.	Ushti chettu	Shrub
516	<i>Solanum surattense</i> Burm. f.	Ramamulaga, Rammolaka	Herb
84	Sterculiaceae		
517	<i>Helicteres isora</i> L.	Gooba Tada, Malikaya	Small Tree
518	<i>Melhania incana</i> Heyne ex Wight & Arn.	0	Shrub
519	<i>Waltheria indica</i> L.	Pedda Adaci Kandi	Under Shrub
85	Tiliaceae		
520	<i>Corchorus aestuans</i> L.	Nela beera	Herb
521	<i>Corchorus fascicularis</i> Lam.	Barekithuthora	Herb
522	<i>Corchorus olitorius</i> L.	Janumu	Herb
523	<i>Corchorus tridens</i> L.	0	Herb
524	<i>Corchorus trilocularis</i> L.	Bankaku	Herb
525	<i>Grewia abutilifolia</i> Vent. ex Juss.	Peddhatada	Small Tree
526	<i>Grewia flavescens</i> A. Juss.	Jana	Shrub
527	<i>Grewia hirsuta</i> Vahl	Kadurpandlu	Shrub
528	<i>Grewia orientalis</i> L.	Bampudu	Shrub
529	<i>Grewia tenax</i> (Forsk.) Fiori	0	Stragglng Shrub
530	<i>Grewia tiliaefolia</i> Vahl,	Charachi	Tree
531	<i>Triumfetta rhomboidea</i> Jacq.	Dhekki	Under Shrub
532	<i>Triumfetta rotundifolia</i> Lam.	0	Under Shrub

86	Typhaceae		
533	<i>Typha angusta</i> Bory & Chaub.	Jammu	Herb
87	Ulmaceae		
534	<i>Holoptelia intergrifolia</i> (Roxb.) Planch.	Nemalinara, Thapasi, Nauli	Tree
88	Verbenaceae		
535	<i>Lantana camara</i> L. var. <i>aculeata</i>	Gabbuseeki	Shrub
536	<i>Lantana wightiana</i> Wall. ex Gamble	0	Shrub
537	<i>Phyla nodiflora</i> (L.) E. E. Greene	Bokkena, Mosalipappu	Herb
538	<i>Premna tomentosa</i> Willd.	Naguru, Narava	Small Tree
539	<i>Tectonia grandis</i> L. f.	Teku	Tree
540	<i>Vitex negundo</i> L.	Vavili	Shrub
89	Vitaceae		
541	<i>Ampelocissus latifolia</i> (Roxb.) Planch.	0	Climber
542	<i>Cayratia trifolia</i> (L.) Domin.	Edakula Mandulamari	Climbing Shrub
543	<i>Cissus quadrangularis</i> L.	Nalleru	Climbing Shrub
544	<i>Cissus repanda</i> Vahl	Bhansatat	Climber
90	Zygophyllaceae		
545	<i>Tribulus terrestris</i> L.	Palleru	Herb