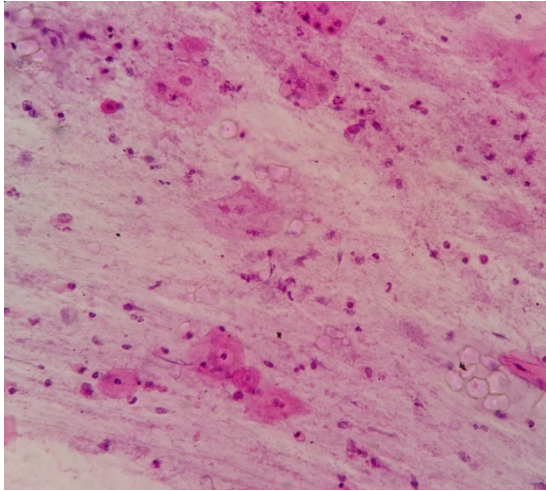
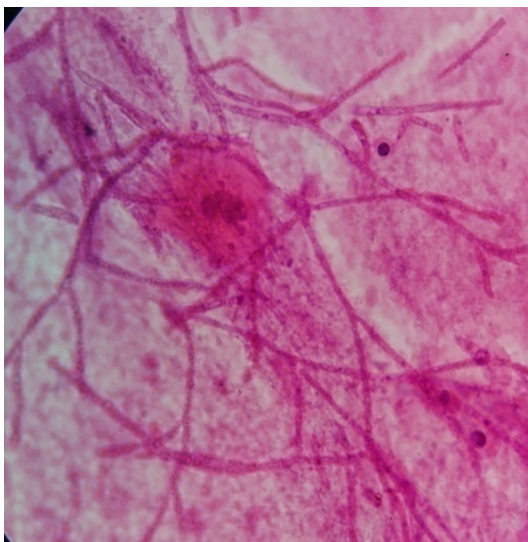


**SupplementaryTable 1. Hematological investigations in COPD patients**

Investigations	Male N (%)	Female N (%)
Normal Hb level	125 (25.15 %)	24 (4.82 %)
Normal TLC	279 (56.13 %)	19 (3.82 %)
Normal DLC	279 (56.13 %)	19 (3.82 %)
Normal ESR	132 (26.55 %)	20 (4.02 %)
Normal MCV	127 (25.55 %)	24 (4.82%)
Normal MCH	127 (25.55 %)	24 (4.82%)
Normal MCHC	127 (25.55 %)	24 (4.82%)



**Supplementary Figure 1. H & E stained (10x) smear of sputum cytology showing squamous cells, majority are mature superficial squamous cells along with inflammatory cells from a COPD patient diagnosed with bacterial infection.**



**Supplementary Figure 2. H & E stained (10x) smear of sputum cytology showing fungus filaments along with centrally placed squamous cell and inflammatory cells from a COPD patient diagnosed with fungal infection.**